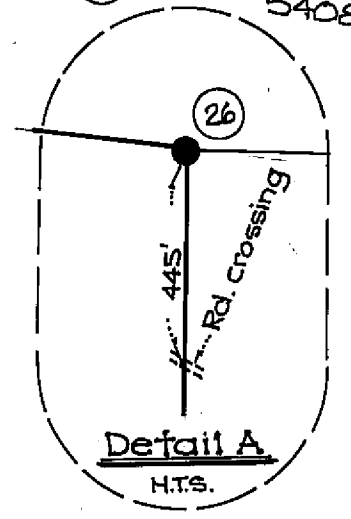
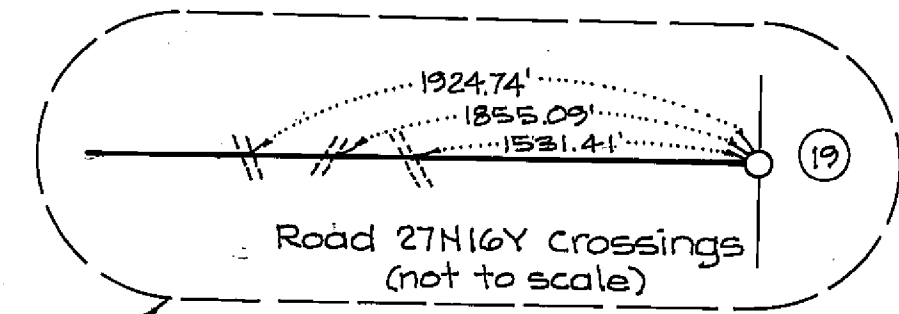
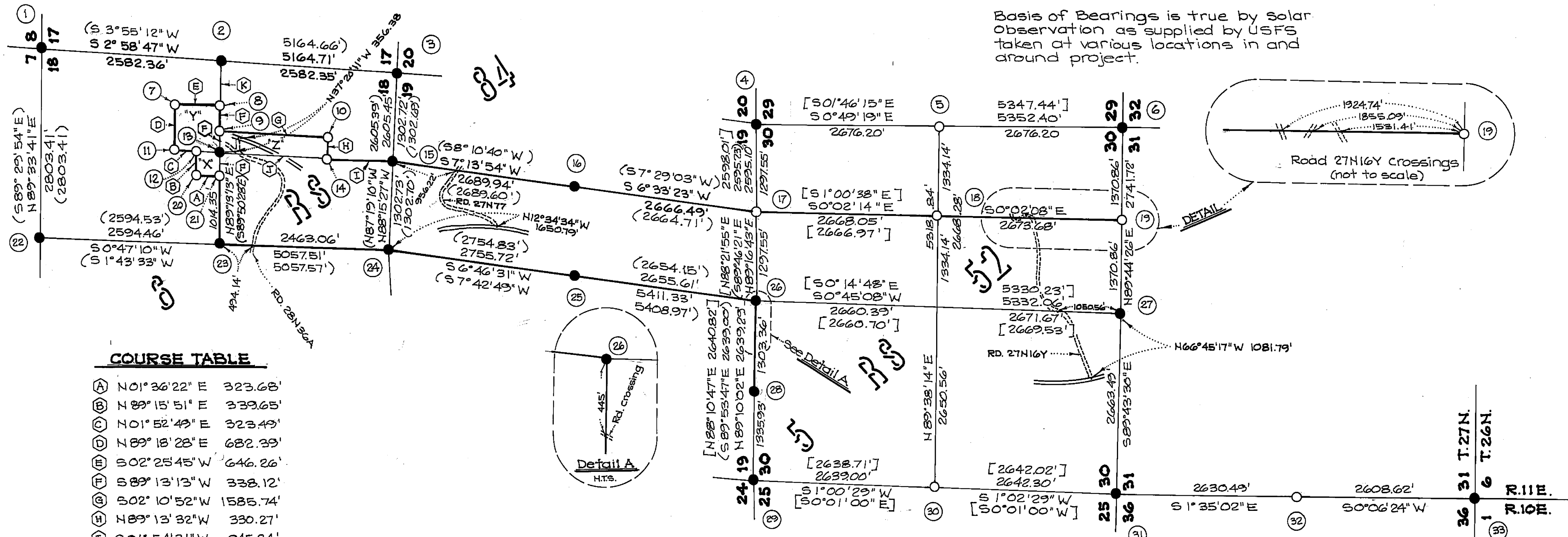


Basis of Bearings is true by solar observation as supplied by USFS taken at various locations in and around project.



COURSE TABLE

(A)	N 01° 36' 22" E	323.68'
(B)	N 89° 15' 51" E	339.65'
(C)	N 01° 52' 49" E	323.49'
(D)	N 89° 18' 28" E	682.39'
(E)	S 02° 25' 45" W	646.26'
(F)	S 89° 13' 13" W	338.12'
(G)	S 02° 10' 52" W	1585.74'
(H)	N 89° 13' 32" W	330.27'
(I)	S 01° 54' 31" W	945.84'
(J)	S 01° 54' 31" W	1576.40'
(K)	N 89° 13' 13" E	676.23'

Area "X" = SE 1/4, SE 1/4, SW 1/4, NE 1/4 Sect. 18
 Area "Y" = SW 1/4, SE 1/4, NE 1/4 Sect. 18
 Area "Z" = W 1/2, W 1/2, NE 1/4, SE 1/4 and NW 1/4, NW 1/4, SE 1/4, SE 1/4 Sect. 18

LEGEND

- Found monument as described in corner notes (see sheet 5)
- Set standard U.S.F.S. Aluminum Cap and aluminum monument.
- () Record data per Bk. 6 R.S. Pg. 84
- [] Record data per Bk. 5 R.S. Pg. 52
- ① Corner reference number, see sheet 5 for description
- ACAP Aluminum cap & aluminum pipe
- MOS Mound of stone
- Line marked and posted by this survey
- == County Road No 213
- === Right-of-Way

RECORD OF SURVEY
 FOR
PLUMAS NATIONAL FOREST
EAST ZONE 88 CADASTRAL SURVEY

Being a portion of Sections 18 & 19, Section 30 and the west line of Section 31, T.27N., R.11E., M.D.M. in the unincorporated territory of Plumas County, California.

BURGESS
 Land Surveys
 Redding, California

May, 1989
 Scale: 1" = 1000'