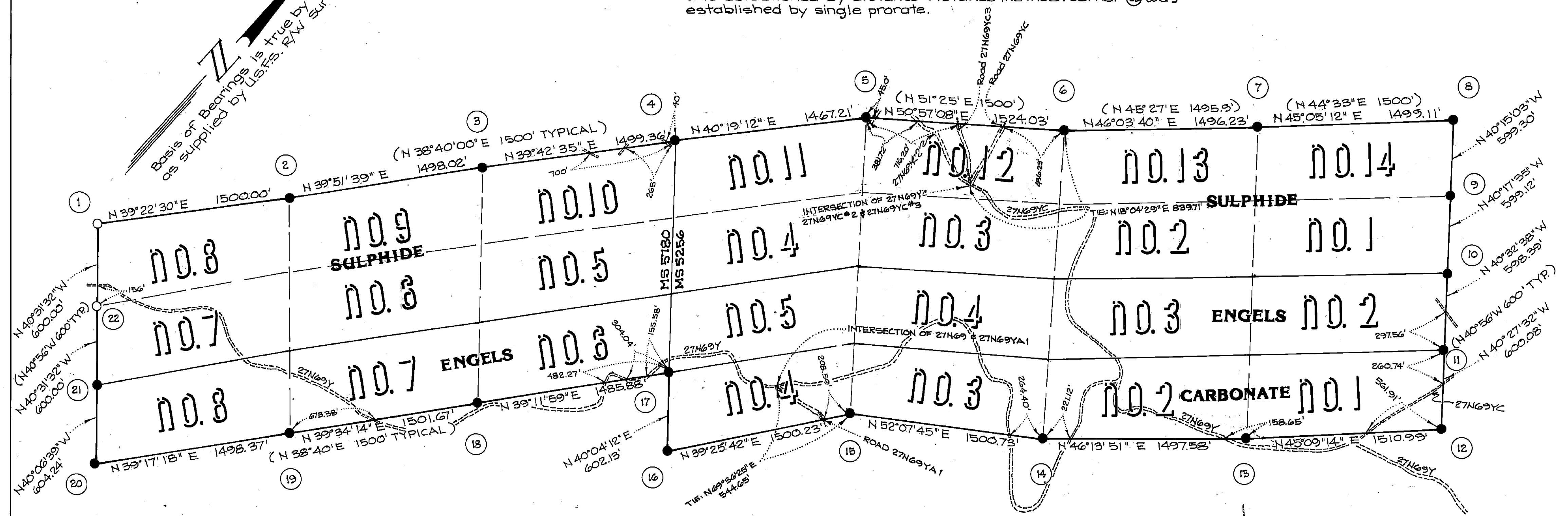


NOTE

This survey is a retracement of portions of Mineral Surveys N^o 5256 and N^o 5780. Corner positions ② thru ⑫ were established by finding original Gov't. evidence (see corner notes). Corner ① was established by distance-distance method. Corner ⑬ was established by single prorate.

N
Basis of Bearings is true by solar observation as supplied by U.S.F.S. RW Survey



LEGEND

- Found Corner as described in corner notes, sheet 3
- Set Corner as described in corner notes, sheet 3
- () Record data per original Gov't. Mineral Surveys N^o 5256 & N^o 5780 shown for comparison.
- ACAP Aluminum Cap and Aluminum Pipe
- M.O.S. Mound of Stone
- ① Corner reference number, see sheet 3 for description
- Lines marked and posted by this survey
- ==== Road or proposed road
- Flag line (Proposed Road) crossing as noted

RECORD OF SURVEY
FOR
PLUMAS NATIONAL FOREST
"EAST ZONE 88 CADASTRAL SURVEY"
MINERAL SURVEYS N^o 5256, 5780,
4753 & 5779

Being a portion of Sections 3, 4, 5, 8, 9, 13, 19, 30 & 31, T. 27N., R. 11E., M.D.M. in the unincorporated territory of Plumas county, California.

BURGESS
Land Surveys
REDDING, CALIFORNIA

May, 1989
Scale: 1" = 500'