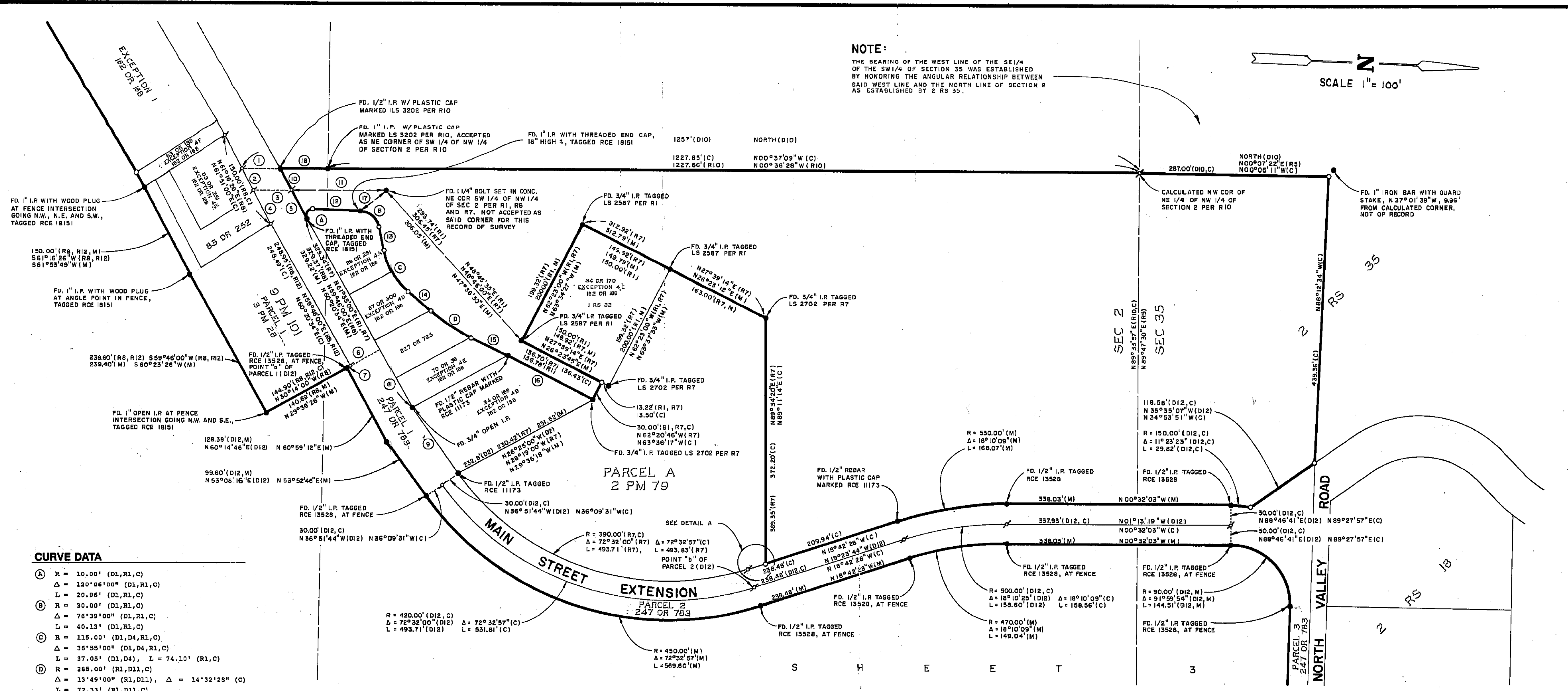


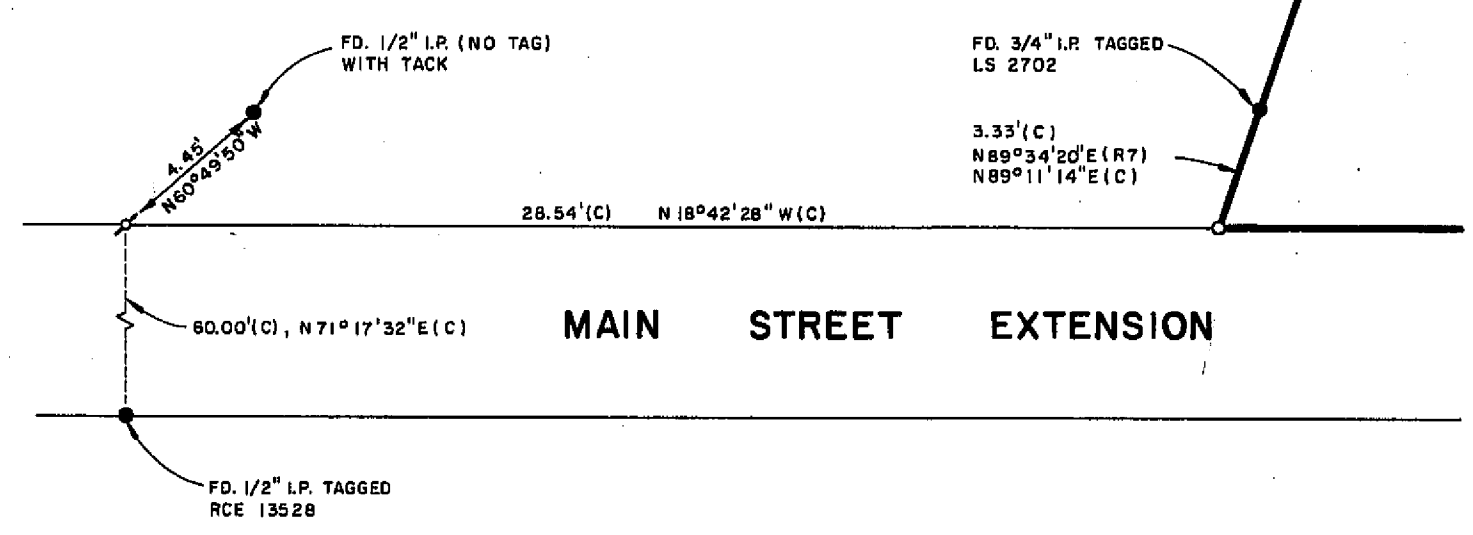
NOTE: THE BEARING OF THE WEST LINE OF THE SE 1/4 OF THE SW 1/4 OF SECTION 35 WAS ESTABLISHED BY HONORING THE ANGULAR RELATIONSHIP BETWEEN SAID WEST LINE AND THE NORTH LINE OF SECTION 2 AS ESTABLISHED BY 2 RS 55.



CURVE DATA table with columns A, B, C, D and rows for R, Δ, L, and other curve parameters.

LEGEND - SEE SHEET 1 OF 4

LINE DATA table with columns 1-10 and 11-20, listing bearings and distances for various survey lines.



DETAIL A SCALE 1"=5'

RECORD OF SURVEY

A PORTION OF SECTION 2, T.26N., R.9E. AND SECTION 35, T.27N., R.9E., M.D.B. & M. PLUMAS COUNTY, CALIFORNIA

FOR DELPHIAN CANNON & TROY WAINSCOT

ROLLS, ANDERSON & ROLLS CIVIL ENGINEERS 965 FIR STREET CHICO, CALIFORNIA 95928

JUNE, 1988

SHEET 2 OF 4