

BASIS OF BEARINGS

SOUTH LINE OF SECTION 28 - N89°51'00"E AS PER 4-R/S-4.

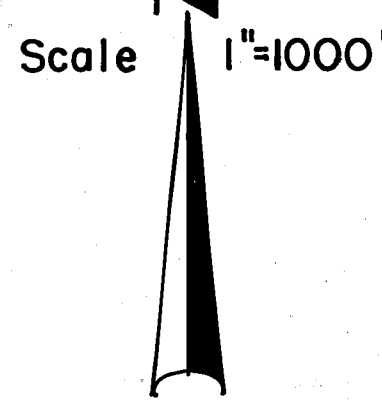
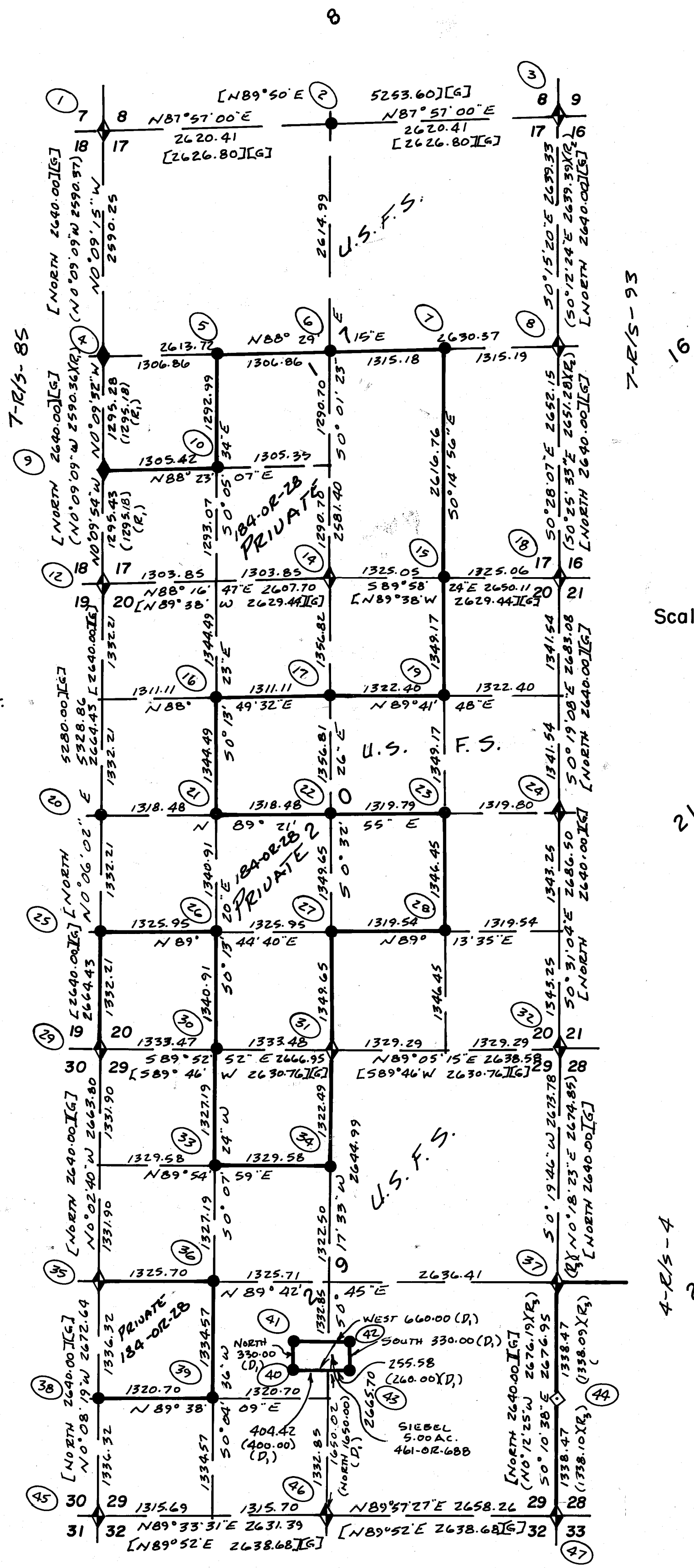
LEGEND

- ◆ - FOUND A STANDARD B.L.M. MONUMENT (STD. B.L.M. MON.) A 3/4" BUREAU OF LAND MANAGEMENT BRASS CAP (1967) ON 2 1/2" IRON PIPE SET IN ROCK MOUND.
- ◆ - FOUND A STD. U.S.F.S. MONUMENT A 30" LONG 2" ALUM. PIPE WITH A 3/4" ALUM. CAP PROPERLY MARKED FOR CORNER IN A MOUND OF ROCKS. MONUMENT HAS A PLASTIC BASE WITH MAGNET INSIDE.
- - SET A STD. U.S.F.S. MONUMENT DESCRIBED ABOVE. SET IN ROCK MOUND.
- ② - REFERENCE NUMBER FOR CORNER DESCRIPTION, STARTING ON PAGE 3.
- (R₃) - DATA AS PER 4-R/S-4
- (R₂) - DATA AS PER 7-R/S-93
- (R₁) - DATA AS PER 7-R/S-85
- (D) - DATA AS PER 461-OR-688
- [G] - DATA AS PER GOV'T LAND OFFICE NOTES. (G.L.O.)
- - REPRESENTS A POSTED AND BLAZED B.D.Y.

DISTANCES SHOWN HEREON ARE IN FEET AND DECIMAL PORTIONS THEREOF.

SURVEY HISTORY - GOVERNMENT
 THE SUBDIVISION OF T25N-R9E WAS SURVEYED BY WILLIAM MINTO COMPLETED NOV. 5, 1880

REMONUMENTATION OF CORNERS ⑨ IN T25N-R9E. WAS PERFORMED BY ADAM SYPLIK AND COMPLETED AUG. 14, 1967



RECORD OF SURVEY
 FOR
U.S.D.A. - PLUMAS NATIONAL FOREST
'BUTTERFLY CADASTRAL SURVEY'

Being portions of Sections 17, 20, 27, 28, 29 and 33
 T. 25 N. - R. 9 E. - M.D.M.
 PLUMAS CO., CA
 JUNE, 1988

LIPPINCOTT SURVEYING

1007 BILLE ROAD - P.O. BOX 671 - PARADISE, CA 95967
 Ph. 916/ 877-4300

8 RS 40

40