

SURVEYOR'S STATEMENT

This map correctly represents a survey made by me or under my direction in conformance with the requirements of the Land Surveyor's Act at the request of Bill Valentine in March, 1988.



John W. Hamby
John W. Hamby L.S. 2843

NOTE: This map is a result of a Lot Line Adjustment approved by the City of Portola.
Date 4-4-88

COUNTY SURVEYOR'S STATEMENT

This map has been examined in accordance with section 8766 of the Land Surveyor's Act this 20th day of May, 1988.

Lawrence J. Brock
Lawrence J. Brock R.C.E. 13528

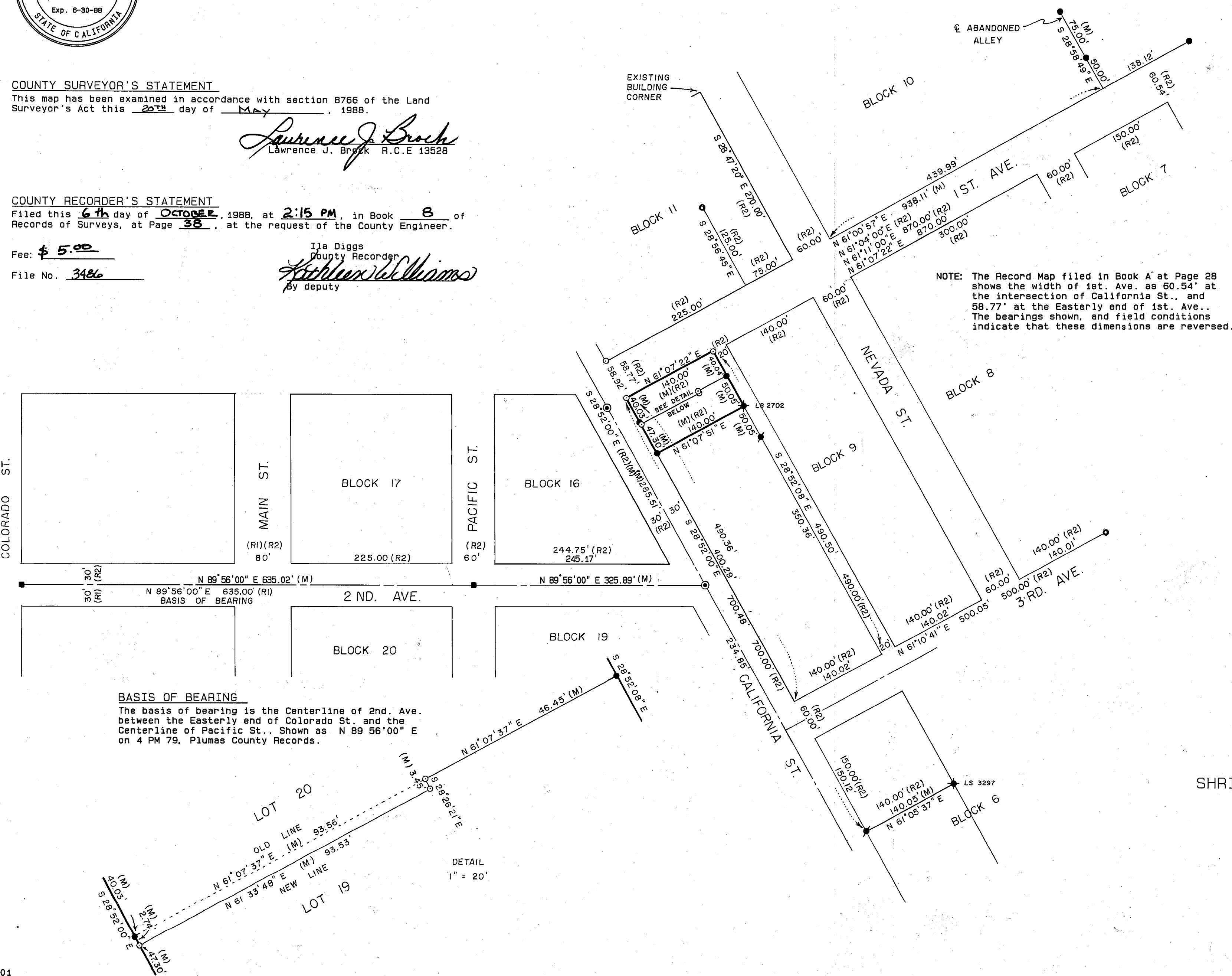
COUNTY RECORDER'S STATEMENT

Filed this 6th day of OCTOBER, 1988, at 2:15 PM, in Book 8 of Records of Surveys, at Page 38, at the request of the County Engineer.

Fee: \$ 5.00

File No. 3486

Ila Diggs
County Recorder
Stephen Williams
By deputy

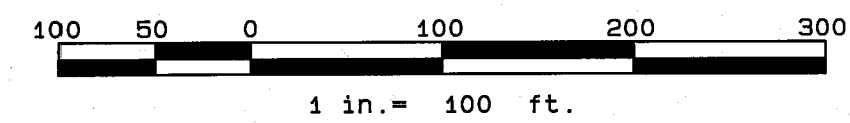


LEGEND

- FOUND 5/8" Iron Pin SET tag L.S. 2843
- ◆ FOUND 3/4" I.P. tagged as shown
- FOUND 3/4" I.P. open - SET tag L.S. 2843
- FOUND 1/2" I.P. open - SET tag L.S. 2843
- FOUND 1/2" Rebar with Cap L.S. 2843
- ⊙ SET R.R. Spike stamped L.S. 2843
- SET 5/8" Rebar with Alum. Cap L.S. 2843
- (M) MEASURED
- (R1) RECORD per 4 PM 79
- (R2) RECORD per Book A Page 28 (Roberts Lumber Co. Addition to Portola)

NOTE: Bearings & Distances not Measured or Record are Calculated.

NOTE: The Record Map filed in Book A at Page 28 shows the width of 1st. Ave. as 60.54' at the intersection of California St., and 58.77' at the Easterly end of 1st. Ave.. The bearings shown, and field conditions indicate that these dimensions are reversed.



BASIS OF BEARING
The basis of bearing is the Centerline of 2nd. Ave. between the Easterly end of Colorado St. and the Centerline of Pacific St.. Shown as N 89° 56' 00" E on 4 PM 79, Plumas County Records.

RECORD OF SURVEY
FOR
JAY FAIR &
SHRINERS HOSPITAL FOR CRIPPLED CHILDREN

LOTS 19 & 20 - BLOCK 9
ROBERTS LUMBER CO. ADDITION TO PORTOLA

A Portion of the NW 1/4 of Section 1
T. 22 N., R. 13 E., M.D.B. & M.
Portola - Plumas County - California
SCALE 1" = 100' APRIL 1988

HAMBY SURVEYING INC.
P.O. BOX 1209 Ph. (916) 832-5571
PORTOLA, CALIFORNIA 96122