

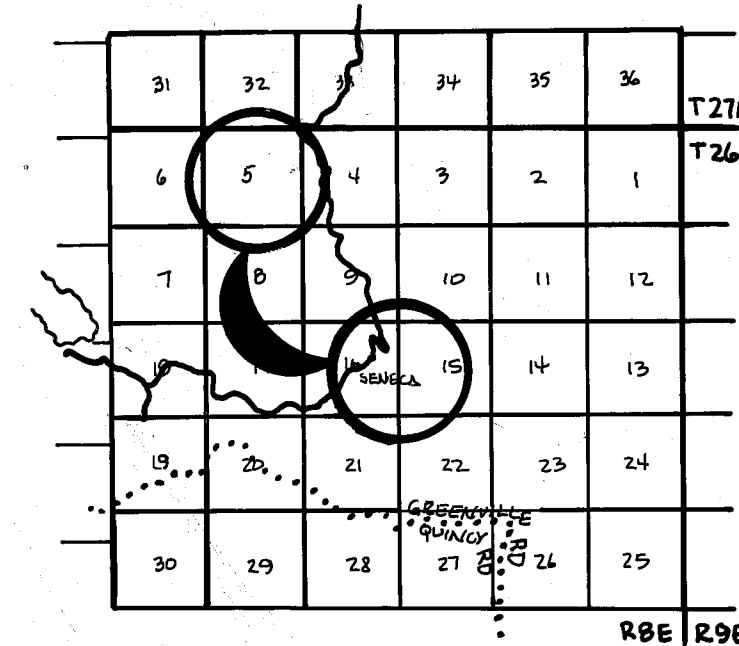
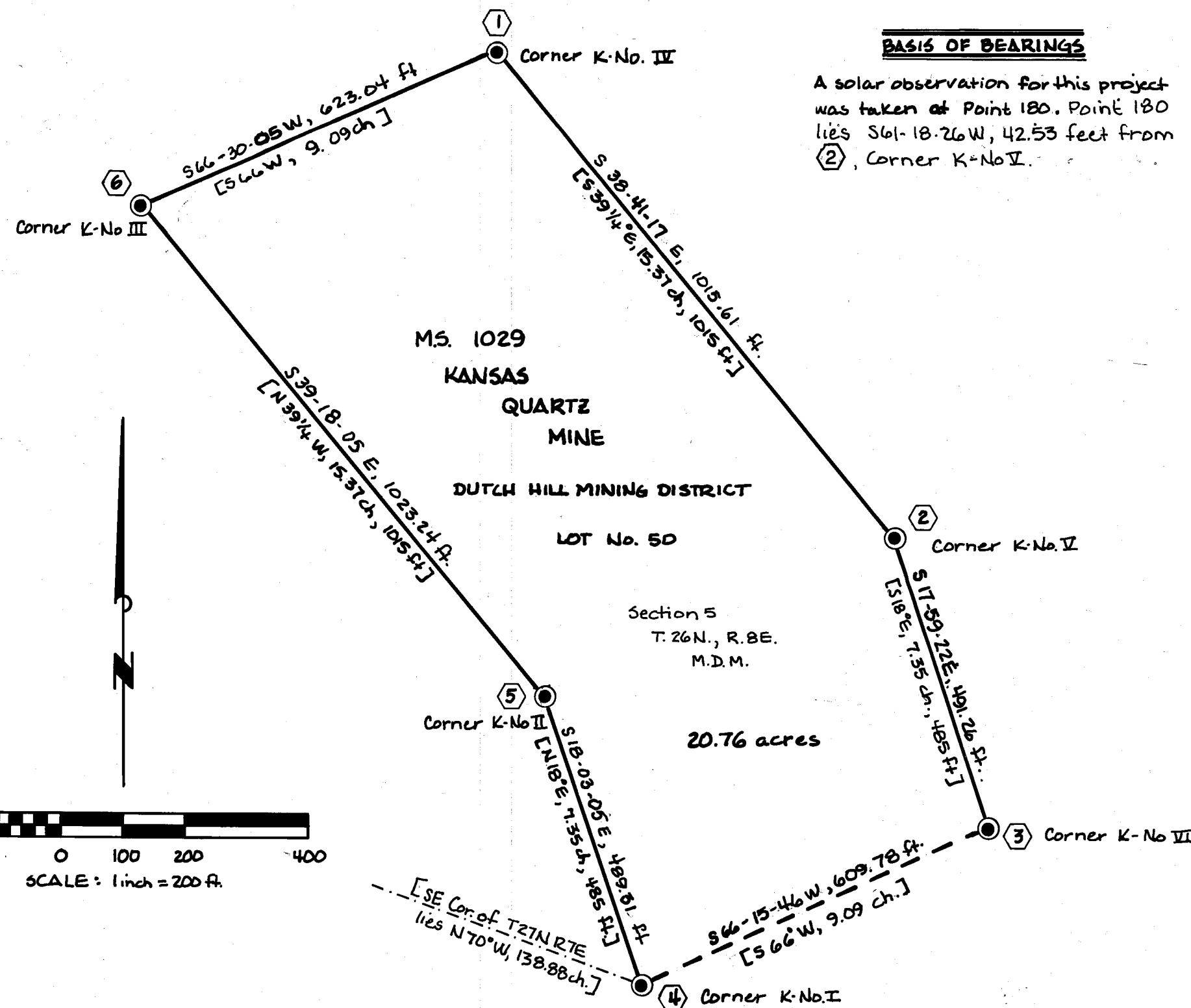
HISTORY OF SURVEYS

A survey of the "Kansas Quartz Mine" was made by Arthur W. Keddie, U.S. Deputy Mineral Surveyor, was performed in September, 1881. [Record]

A survey of the "Del Monte Group of Mines", Mineral Survey 4824, embracing the Del Monte, Del Norte, and the Southeast Extension of the Del Norte Mines, was done by B.L. McCoy, U.S. Mineral Surveyor, in December, 1909. ((Record)), (Calculated)

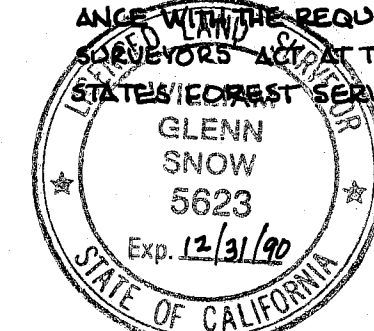
Mineral Survey 5223, the "Seneca Consolidated Gold Mines", also known as the Addie Bell, White Lilly, Aeroplane, and Gold Point No. 1 and No. 2 Mines, was surveyed by Arthur Keddie, U.S. Deputy Mineral Surveyor, in November and December of 1915. [Record]

A retracement of the boundaries of Mineral Surveys 4824 and 5223 was done by Roger F. Wilson, Cadastral Engineer, and Harold A. Johnston, Public Land Surveyor of the General Land Office, was performed in July and August of 1940. [Record]



SURVEYOR'S STATEMENT

THIS MAP CORRECTLY REPRESENTS A SURVEY MADE BY ME OR UNDER MY DIRECTION IN CONFORMANCE WITH THE REQUIREMENTS OF THE LAND SURVEYORS' ACT AT THE REQUEST OF THE UNITED STATES FOREST SERVICE IN JUNE, 1988.



William G. Snow
WILLIAM G. SNOW, LS 5623
FOREST LAND SURVEYOR

COUNTY SURVEYOR'S STATEMENT

THIS MAP HAS BEEN EXAMINED IN ACCORDANCE WITH SECTION 8766 OF THE LAND SURVEYORS' ACT THIS 7th DAY OF JULY, 1988.

Lawrence J. Brock
LAWRENCE J. BROCK, RCE 19523
PLUMAS COUNTY SURVEYOR

RECORDER'S STATEMENT

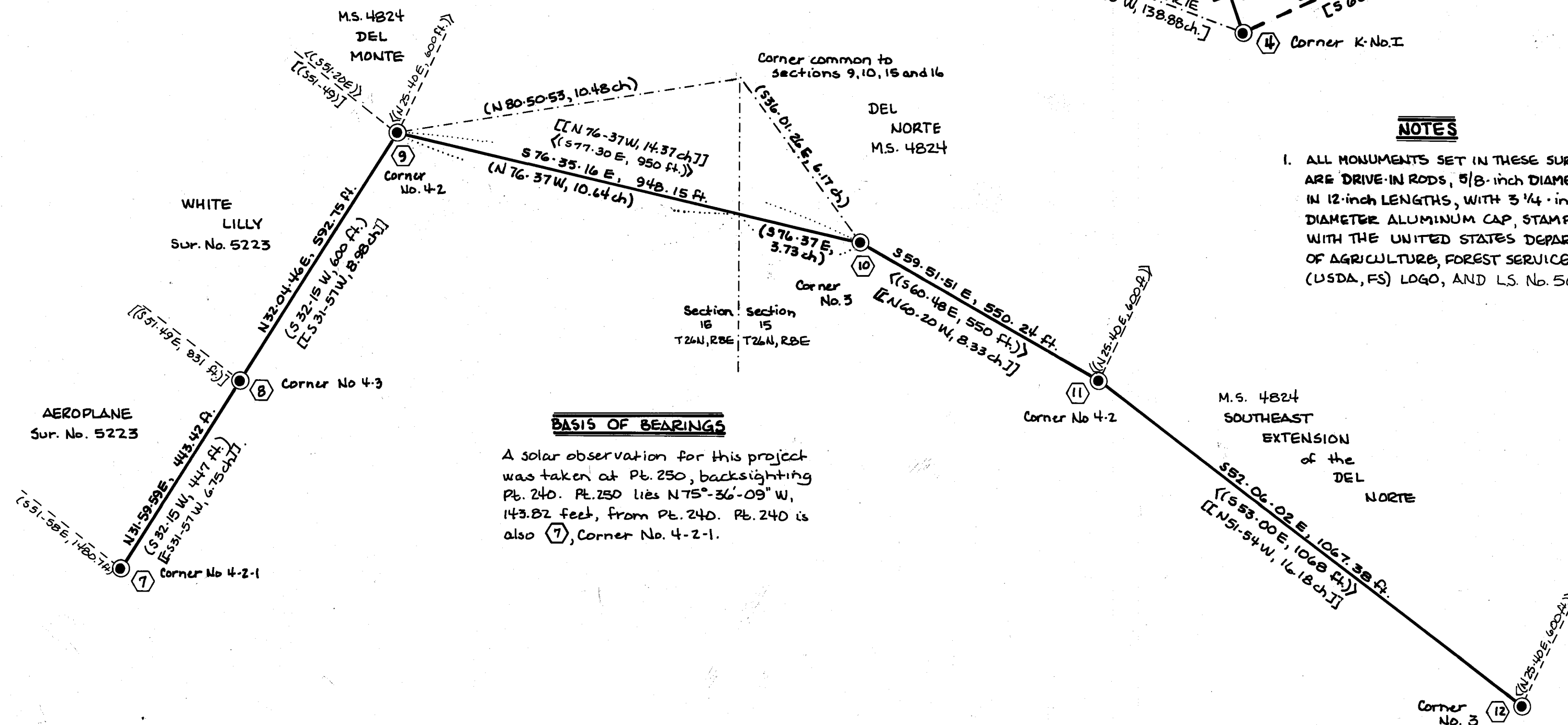
FILED THIS 7th DAY OF JULY, 1988, AT 2:33 P.M., IN BOOK 8 OF RECORDS OF SURVEY, AT PAGE 30-31, AT THE REQUEST OF THE COUNTY ENGINEER.

FEE \$ 7.00
FILE NO. 158
ILA DIGGS
COUNTY RECORDER

Arthur Williams
ARTHUR WILLIAMS
DEPUTY

RECORD OF SURVEY

LOCATED IN SECTIONS 5, 15, and 16, T. 26 N., R. 8 E., M.D.M. COUNTY OF PLUMAS, STATE OF CALIFORNIA FOR THE PLUMAS NATIONAL FOREST
JUNE, 1988



NOTES

- ALL MONUMENTS SET IN THESE SURVEYS ARE DRIVE-IN RODS, 5/8-inch DIAMETER IN 12-inch LENGTHS, WITH 3/4-inch DIAMETER ALUMINUM CAP, STAMPED WITH THE UNITED STATES DEPARTMENT OF AGRICULTURE, FOREST SERVICE (USDA, FS) LOGO, AND LS. No. 5623.