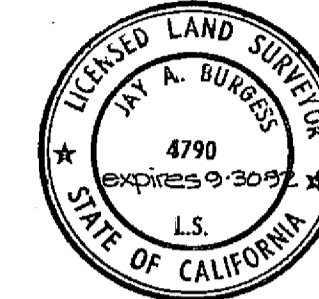


SURVEYOR'S STATEMENT

This map correctly represents a survey made by me or under my direction in conformance with the requirements of the Land Surveyor's Act at the request of Archie Brafford in September, 1989



Jay Burgess
Jay A Burgess L.S. 4790

COUNTY SURVEYOR'S STATEMENT

This map has been examined in accordance with Section 8766 of the Land Surveyor's Act this 22ND day of FEBRUARY 1991.

signed *Lawrence J. Brock*
Lawrence J. Brock R.C.E. 13528
LICENSE EXPIRATION DATE 3-31-95

COUNTY RECORDER'S STATEMENT

Filed this 22ND day of FEBRUARY, 1991, at 4:00 P.M., in Book 8 Record of Surveys at Page 149, Plumas County Records at the request of the County Engineer.

Fee: \$ 5.00

File No 1315

JoAnn Van Meter
Deputy
Judith Wells
County Recorder

LEGEND

- Found 1" I.P. with 2 1/4" Brass Cap, L.S. 1880 per 2 RS 34
- ⊙ Found corners as noted.
- Set USFS monument as noted.
- () Record per 2 RS 34
- Dimension Lines.
- Property boundary marked and posted to USDA Forest Service Standards.
- Other USFS boundary.
- USFS Monument = 3 1/4" Aluminum Cap on a 30" long 2 1/2" Aluminum pipe.
- Amos = A mound of stone.

RECORD OF SURVEY for

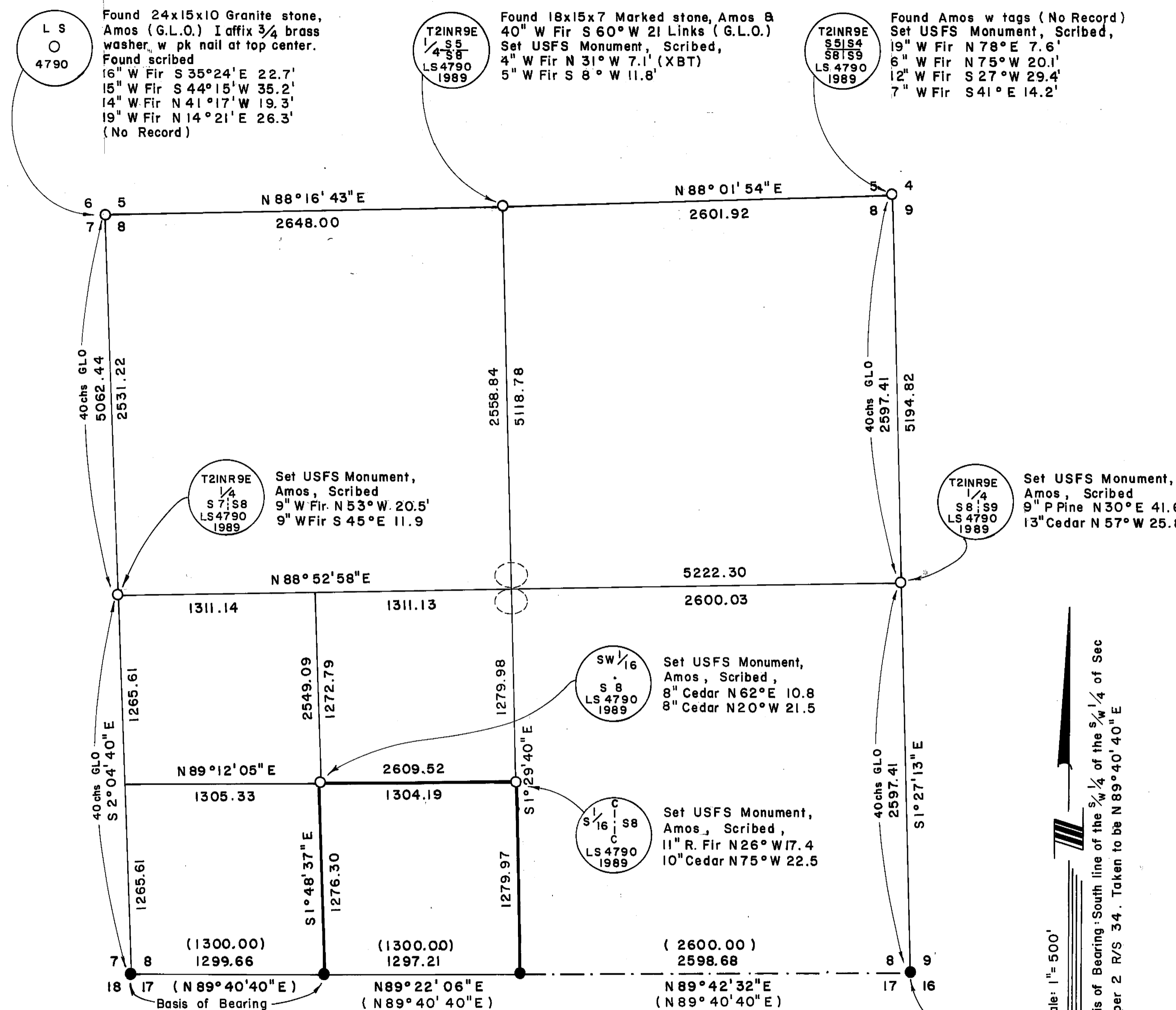
ARCHIE BRAFFORD and

PLUMAS NATIONAL FOREST of

Section 8 T2IN R9E M.D.M. in the unincorporated territory of Plumas County, Ca.

BURGESS
LAND SURVEYS
REDDING, CALIFORNIA

October, 1989
Sheet: 1 of 1



Found 24x15x10 Granite stone, Amos (G.L.O.) I affix 3/4 brass washer, w pk nail at top center. Found scribed
16" W Fir S 35° 24' E 22.7'
15" W Fir S 44° 15' W 35.2'
14" W Fir N 41° 17' W 19.3'
19" W Fir N 14° 21' E 26.3'
(No Record)

Found 18x15x7 Marked stone, Amos & 40" W Fir S 60° W 21 Links (G.L.O.)
Set USFS Monument, Scribed,
4" W Fir N 31° W 7.1' (XBT)
5" W Fir S 8° W 11.8'

Found Amos w tags (No Record)
Set USFS Monument, Scribed,
19" W Fir N 78° E 7.6'
6" W Fir N 75° W 20.1'
12" W Fir S 27° W 29.4'
7" W Fir S 41° E 14.2'

Set USFS Monument, Amos, Scribed
9" W Fir N 53° W 20.5'
9" W Fir S 45° E 11.9

Set USFS Monument, Amos, Scribed
9" P Pine N 30° E 41.6'
13" Cedar N 57° W 25.8'

Set USFS Monument, Amos, Scribed,
8" Cedar N 62° E 10.8
8" Cedar N 20° W 21.5

Set USFS Monument, Amos, Scribed,
11" R. Fir N 26° W 17.4
10" Cedar N 75° W 22.5

Scale: 1" = 500'
Basis of Bearing: South line of the S 1/4 of the S 1/4 of Sec 8, per 2 R/S 34. Taken to be N 89° 40' 40" E

NOTE: NO EVIDENCE OF ORIGINAL SURVEY BETWEEN SECTIONS 8 AND 17 WAS FOUND. ACCEPTED CORNERS SHOWN (PER 2 R/S 34.) AS BEING A CAREFUL AND FAITHFUL REESTABLISHMENT OF THE ORIGINAL SURVEY. LOCAL ACCESSORIES WERE NOT NOTED.