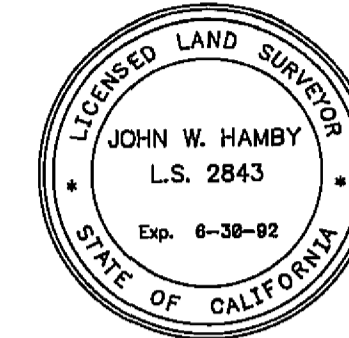


SURVEYOR'S STATEMENT

This map correctly represents a survey made by me or under my direction in conformance with the requirements of the Land Surveyors' Act at the request of Dan Kennedy in August, 1990.



John W. Hamby
John W. Hamby LS 2843

COUNTY SURVEYOR'S STATEMENT

This map has been examined in accordance with Section 8766 of the Land Surveyors' Act this 17th day of January, 1991.

Lawrence J. Brock
Lawrence J. Brock RCE 13528
PLUMAS COUNTY SURVEYOR

RECORDER'S STATEMENT

Filed this 18th day of January, 1991, at 11:00 A. in Book 8 of Record of Surveys, at page 147, at the request of the County Engineer.

Fee \$ 500
File No. 553

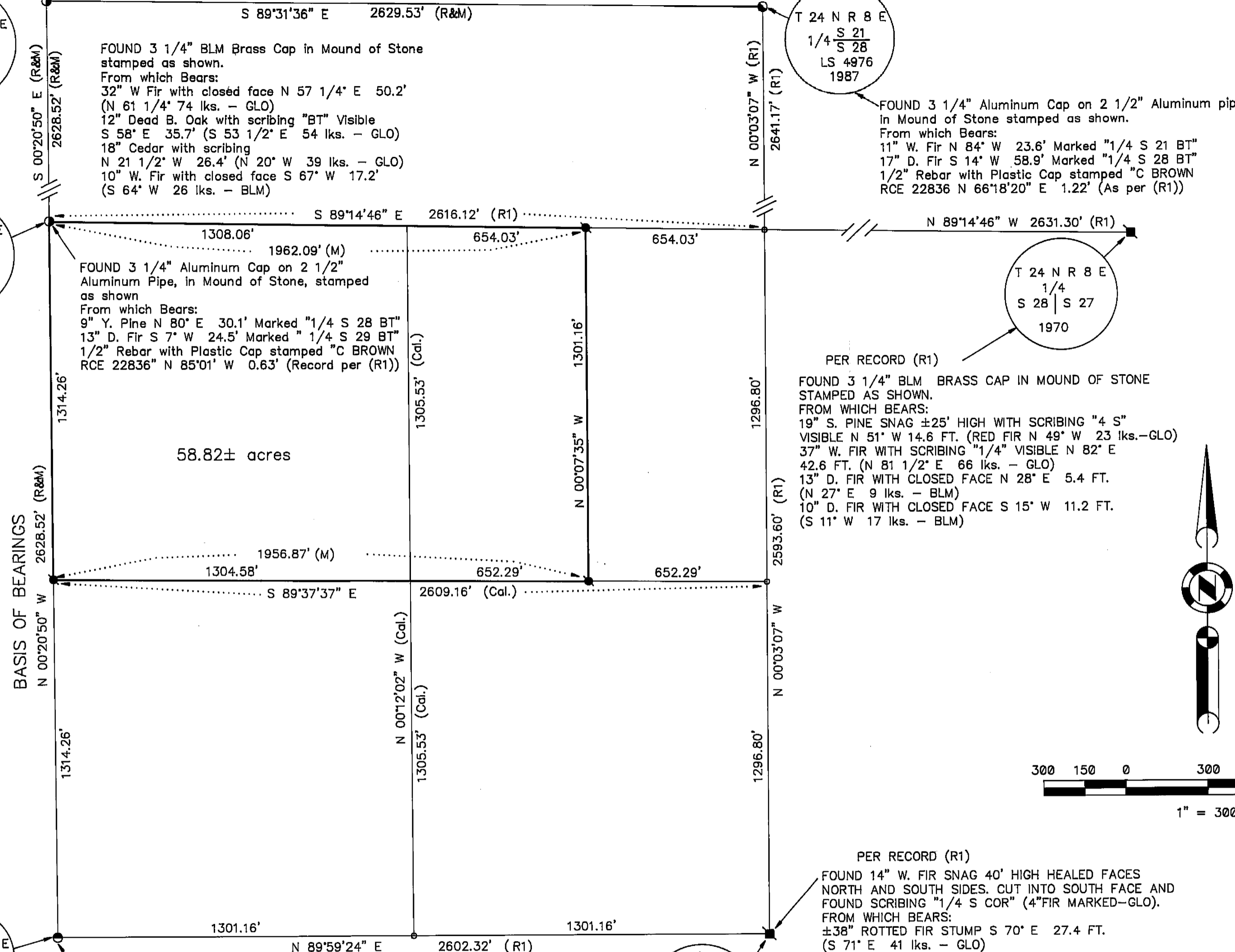
Judith Wells
County Recorder
by *John Van Gelder*
Deputy

RECORD OF SURVEY
for
Dan Kennedy

A portion of the SW 1/4 of Section 28
T. 24 N., R. 8 E., M.D.M.
PLUMAS COUNTY - CALIFORNIA
SCALE 1" = 300' AUGUST, 1990

HAMBY SURVEYING INC.
P.O. Box 1209
PORTOLA, CA. 96122
Phone 916-832-5571

SHEET 1 OF 1



FOUND 3 1/4" BLM Brass Cap in Mound of Stone stamped as shown.
From which Bears:
32" W Fir with closed face N 57 1/4° E 50.2' (N 61 1/4° 74 lks. - GLO)
12" Dead B. Oak with scribing "BT" Visible S 58° E 35.7' (S 53 1/2° E 54 lks. - GLO)
18" Cedar with scribing N 21 1/2° W 26.4' (N 20° W 39 lks. - GLO)
10" W. Fir with closed face S 67° W 17.2' (S 64° W 26 lks. - BLM)

FOUND 3 1/4" Aluminum Cap on 2 1/2" Aluminum Pipe, in Mound of Stone, stamped as shown
From which Bears:
9" Y. Pine N 80° E 30.1' Marked "1/4 S 28 BT"
13" D. Fir S 7° W 24.5' Marked "1/4 S 29 BT"
1/2" Rebar with Plastic Cap stamped "C BROWN RCE 22836" N 85°01' W 0.63' (Record per (R1))

FOUND 3 1/4" Aluminum Cap on 2 1/2" Aluminum pipe in Mound of Stone stamped as shown.
From which Bears:
11" W. Fir N 84° W 23.6' Marked "1/4 S 21 BT"
17" D. Fir S 14° W 58.9' Marked "1/4 S 28 BT"
1/2" Rebar with Plastic Cap stamped "C BROWN RCE 22836 N 66°18'20" E 1.22' (As per (R1))

PER RECORD (R1)
FOUND 3 1/4" BLM BRASS CAP IN MOUND OF STONE STAMPED AS SHOWN.
FROM WHICH BEARS:
19" S. PINE SNAG ±25' HIGH WITH SCRIBING "4 S" VISIBLE N 51° W 14.6 FT. (RED FIR N 49° W 23 lks. - GLO)
37" W. FIR WITH SCRIBING "1/4" VISIBLE N 82° E 42.6 FT. (N 81 1/2° E 66 lks. - GLO)
13" D. FIR WITH CLOSED FACE N 28° E 5.4 FT. (N 27° E 9 lks. - BLM)
10" D. FIR WITH CLOSED FACE S 15° W 11.2 FT. (S 11° W 17 lks. - BLM)

PER RECORD (R1)
FOUND 14" W. FIR SNAG 40' HIGH HEALED FACES NORTH AND SOUTH SIDES. CUT INTO SOUTH FACE AND FOUND SCRIBING "1/4 S COR" (4" FIR MARKED - GLO).
FROM WHICH BEARS:
±38" ROTTED FIR STUMP S 70° E 27.4 FT. (S 71° E 41 lks. - GLO)
13" S. PINE WITH CLOSED FACE N 38° W 12.6 FT. (FIR N 38 1/2° W 19 lks. - GLO)
3 1/4" ALUM. CAP ON A 2 1/2" X 30" ALUM. PIPE IN MOUND OF STONE SET FOR REFERENCE MONUMENT STAMPED AS SHOWN S 53 1/2° W 10.0 FT.
1/2" REBAR WITH A PLASTIC CAP STAMPED "C BROWN RCE 22836 ON SOUTH SIDE OF CORNER TREE (NO RECORD)

BASIS OF BEARINGS
N 00°20'50" W
2628.52' (R&M)

T 24 N R 8 E
S 29 | S 28
S 32 | S 33
1970

T 24 N R 8 E
1/4 S 33
R.M.
100'
LS 4976
1987

LEGEND

- FOUND Point as described
- RECORD Point as described per 8 RS 6
- SET 5/8" Rebar with Aluminum Cap LS 2843
- Nothing Found or Set
- (R1) RECORD per 8 RS 6
- (M) Measured
- (R&M) Record and Measured
- (Cal.) Calculated

BASIS OF BEARINGS

The Basis of Bearings of this Map is the West line of Section 28 as shown in Book 8 of Record of Surveys at Page 6 Plumas County Records.