

**SURVEYOR'S STATEMENT**

THIS MAP CORRECTLY REPRESENTS A SURVEY MADE BY ME OR UNDER MY DIRECTION IN CONFORMANCE WITH THE REQUIREMENTS OF THE LAND SURVEYOR'S ACT AT THE REQUEST OF WARREN CHENEY IN AUGUST 1987.

*John W. Hamby*  
JOHN W. HAMBY L.S. 2843

**COUNTY SURVEYOR'S STATEMENT**

THIS MAP HAS BEEN EXAMINED IN ACCORDANCE WITH SECTION 8766 OF THE LAND SURVEYOR'S ACT THIS 13th DAY OF October, 1987.

*Lawrence J. Brock*  
LAWRENCE J. BROCK R.C.E. 13528

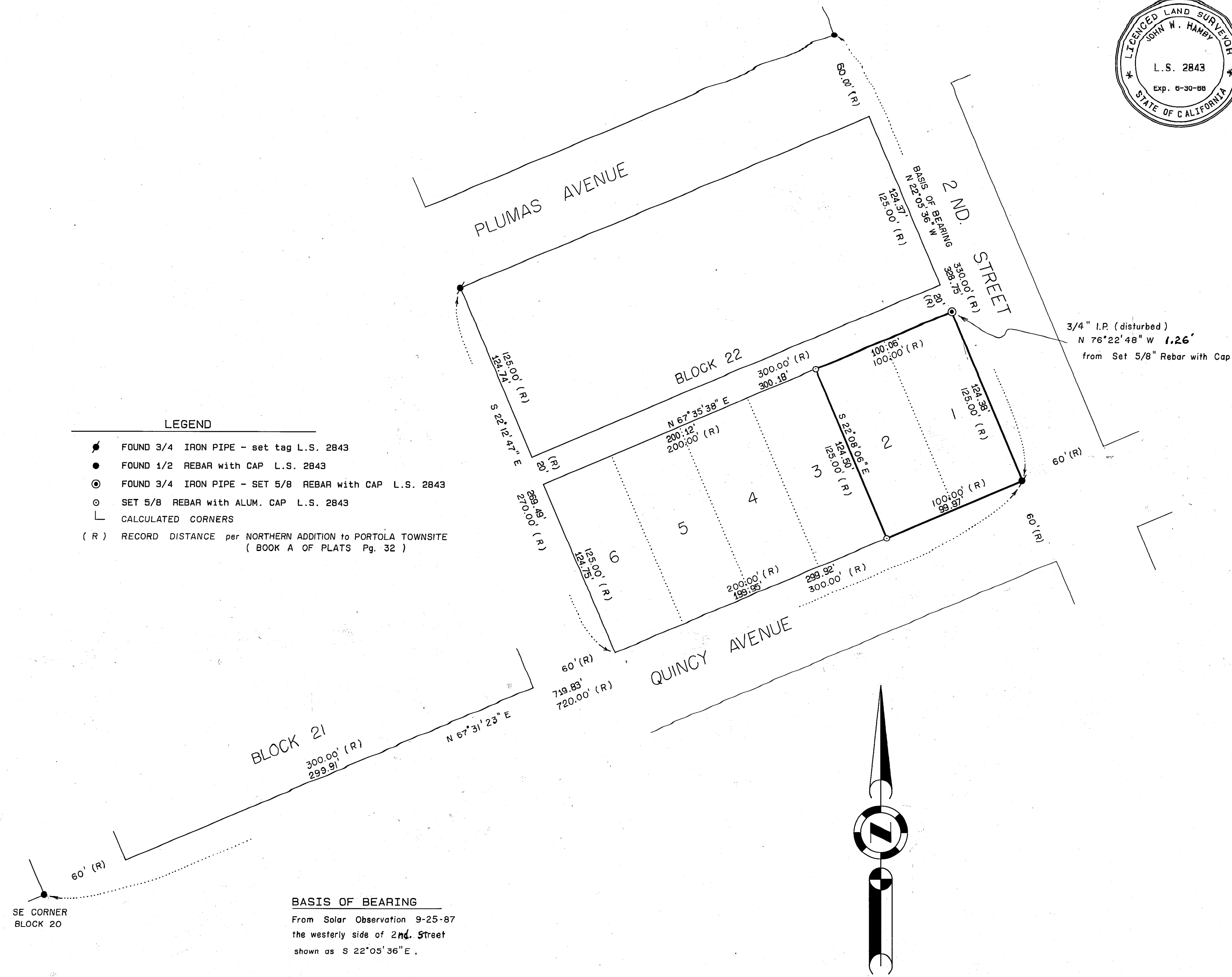
**COUNTY RECORDER'S STATEMENT**

FILED THIS 13th DAY OF October, 1987, AT 8:40 AM IN BOOK 7 OF RECORDS OF SURVEYS, AT PAGE 149, AT THE REQUEST OF THE COUNTY ENGINEER.

FEE: \$50  
FILE No. 3116

ILA DIGGS  
COUNTY RECORDER  
*Beth Carmack*  
BY DEPUTY

- LEGEND**
- FOUND 3/4 IRON PIPE - set tag L.S. 2843
  - FOUND 1/2 REBAR with CAP L.S. 2843
  - ⊙ FOUND 3/4 IRON PIPE - SET 5/8 REBAR with CAP L.S. 2843
  - ⊙ SET 5/8 REBAR with ALUM. CAP L.S. 2843
  - └ CALCULATED CORNERS
  - (R) RECORD DISTANCE per NORTHERN ADDITION to PORTOLA TOWNSITE (BOOK A OF PLATS Pg. 32)



**BASIS OF BEARING**  
From Solar Observation 9-25-87  
the westerly side of 2nd Street  
shown as S 22°05'36" E.

**RECORD OF SURVEY**

FOR  
WARREN CHENEY  
LOTS 1 & 2 - BLOCK 22  
NORTHERN ADDITION TO PORTOLA

Portion of Section 36 - T.23 N., R.13 E., M.D.B. & M.  
Portola - Plumas County - California  
Scale 1 in. = 50 ft. Aug., 1987

HAMBY SURVEYING INC.  
P.O. BOX 1209 Ph. (916) 832-5571  
PORTOLA, CALIFORNIA 96122