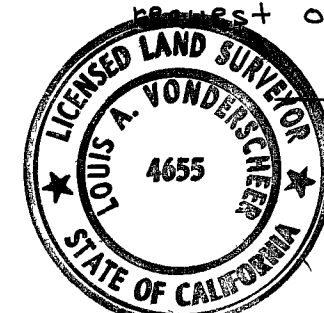
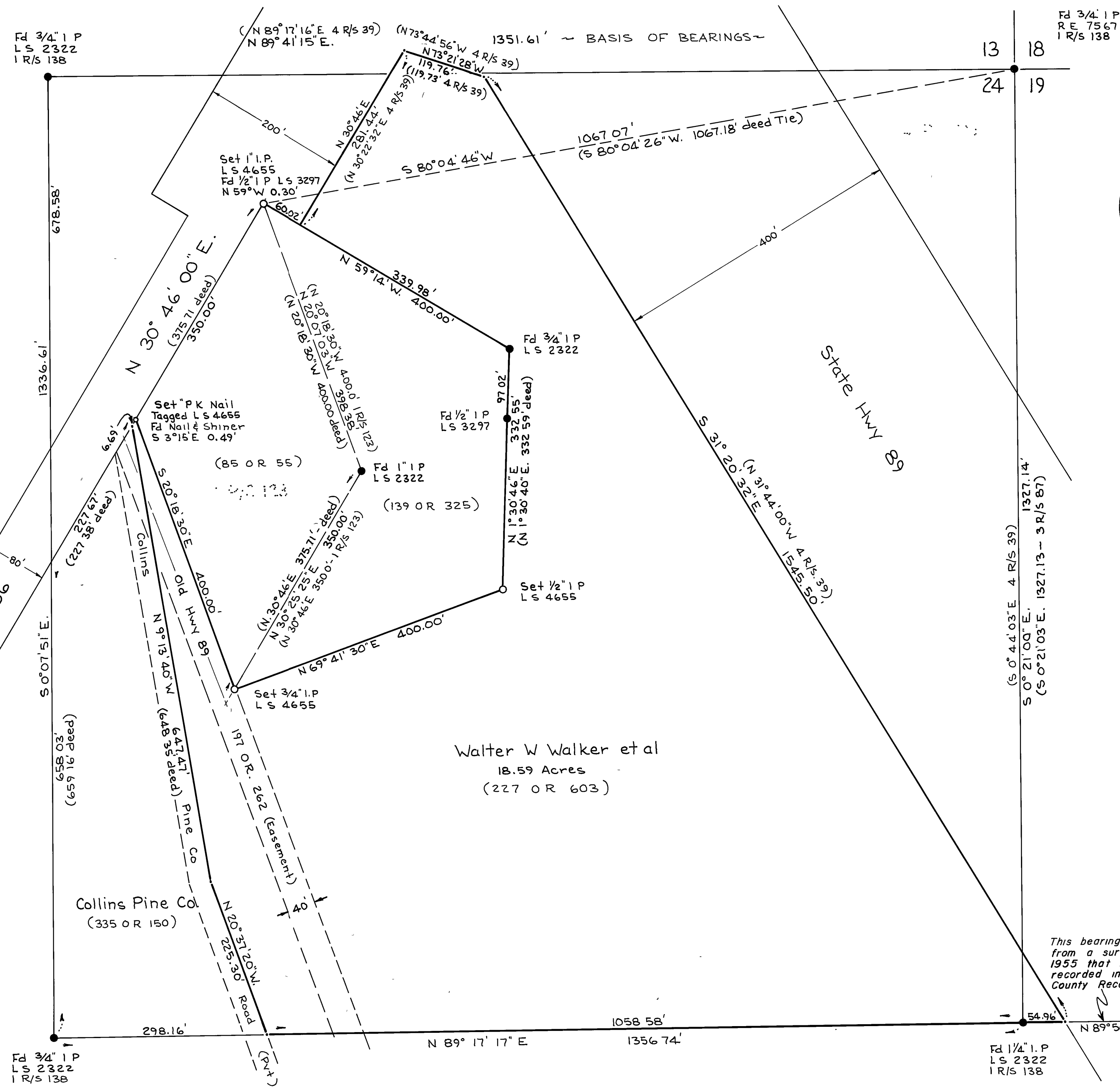


Basis of Bearings: Bk 1 Record of Surveys Pg 138 North line Section 24

Scale: 1"=100'



### Surveyor's Certificate

This map correctly represents a survey made by me or under my direction in conformance with the requirements of the Land Surveyor's Act at the request of James R. Cochrane in September 1982.

*Louis A. Vonderscheer*  
Louis A Vonderscheer - L.S. 4655

### County Surveyor's Certificate

This map has been examined for conformance with the requirements of the Land Surveyor's Act this 13th day of December 1982.

*Lawrence J. Brock*  
County Surveyor  
Lawrence J Brock - RCE 13528

### Recorder's Certificate

Filed this 20 day of December 1982 at 12:56 PM in Book 6 of R.S. at page 88, at the request of the County Engineer.

Fee \$ 5.00  
File No. 4582  
Ila Diggis - County Recorder  
by *Frances Neal* Deputy

- Legend**
- Found Corner as noted
  - Set Corner as noted
  - ( ) Record Data as noted

### Record of Survey

of a Portion of Section 13 & 24 T 28N R 7 E.  
and a Portion of Section 19 T. 28N. R.7E. M.D.M.  
Plumas County California

for  
**Walter W. Walker et al**

October 1982 Scale: 1"=100'

Louis A. Vonderscheer - Land Surveyor  
Sheet 1 of 1.

Walter W Walker et al  
18.59 Acres  
(227 OR 603)

Collins Pine Co  
(335 OR 150)

This bearing is taken from a survey in Dec. 1955 that is not recorded in Plumas County Records