**SURVEYOR'S CERTIFICATE**

THIS MAP CORRECTLY REPRESENTS A SURVEY MADE BY ME OR UNDER MY DIRECTION IN CONFORMANCE WITH THE REQUIREMENTS OF THE LAND SURVEYOR'S ACT AT THE REQUEST OF RICHARD SINE IN AUGUST, 1981.

Joseph G. Brandt
JOSEPH G. BRANDT RCE 26870

COUNTY SURVEYOR'S CERTIFICATE

THIS MAP HAS BEEN EXAMINED FOR CONFORMANCE WITH THE REQUIREMENTS OF THE LAND SURVEYOR'S ACT THIS 15 DAY OF October, 1982.

Lawrence J. Brock
LAWRENCE J. BROCK RCE 13528
PLUMAS COUNTY SURVEYOR

COUNTY RECORDER'S CERTIFICATE

FILED THIS 15th DAY OF October, 1982, AT 2:00 A.M. IN BOOK 6 OF RECORDS OF SURVEY AT PAGE 79 AT THE REQUEST OF THE COUNTY ENGINEER.

ILA DIGGS
COUNTY RECORDER

BY *Frances Nicol*
DEPUTY

FEE: \$5.00
FILE NO. 3119

BASIS OF BEARING

BASIS OF BEARING FOR THIS SURVEY IS THE SOUTH LINE OF THE S.E. 1/4 OF SECTION 17, TAKEN AS N 89° 29' 19" W AS SHOWN ON 5 RS 114.

RECORD OF SURVEY

A PORTION OF
THE S.W. 1/4 OF THE S.E. 1/4
SECTION 17, T24N, R10E, M.D.M.
PLUMAS COUNTY, CALIFORNIA
FOR
RICHARD AND BETTY SINE

brandt & associates
CIVIL ENGINEERS ~ SURVEYORS

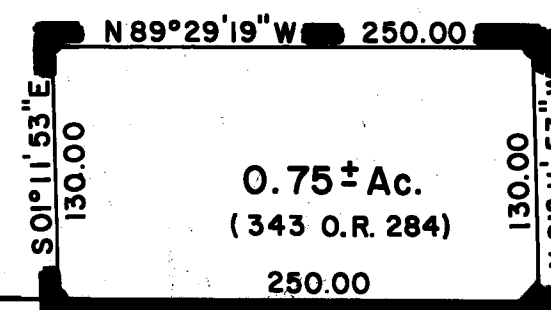
75 COURT STREET
QUINCY, CALIFORNIA 95971
W.O. No. 810504

P.O. BOX 749
916-283-1111
DATE:
SHEET 1 OF 1

FD. 1 1/2" I.P.
LS 2587 AT
S. 1/4 COR.,
SEC. 17.
(5 RS 114)

BASIS OF BEARING

S 89° 29' 19" E 1338.92
(1339.13)



FD. 1/2" REBAR
R.C.E. 15265 AT
S.E. COR. OF S.W. 1/4
OF S.E. 1/4, SEC. 17
(5 RS 114)

LEGEND

- ◆ FD. CORNER AS NOTED
- SET 1/2" REBAR W/ALUM.
CAP, RCE 26870
- () RECORD DATA PER 5 RS 114