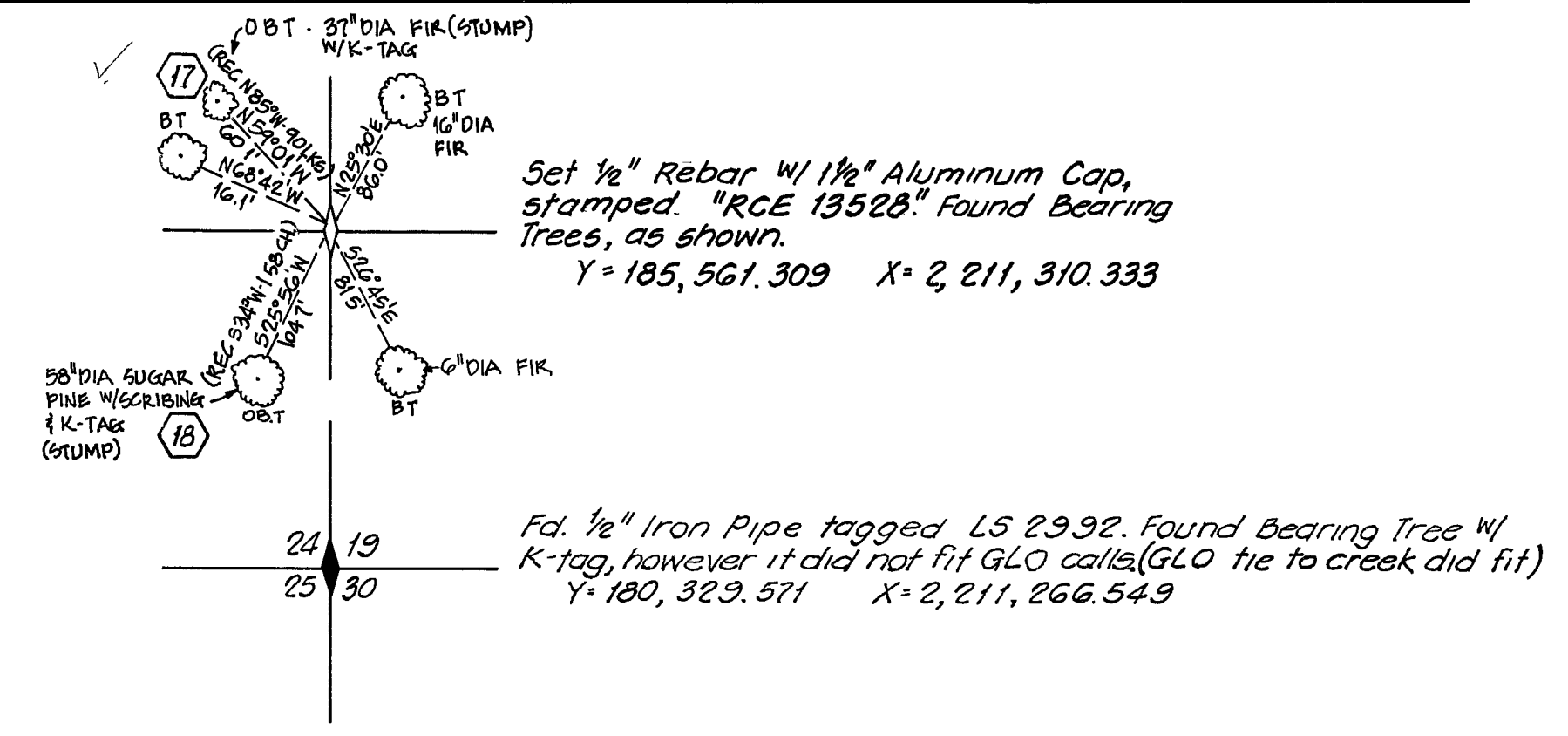
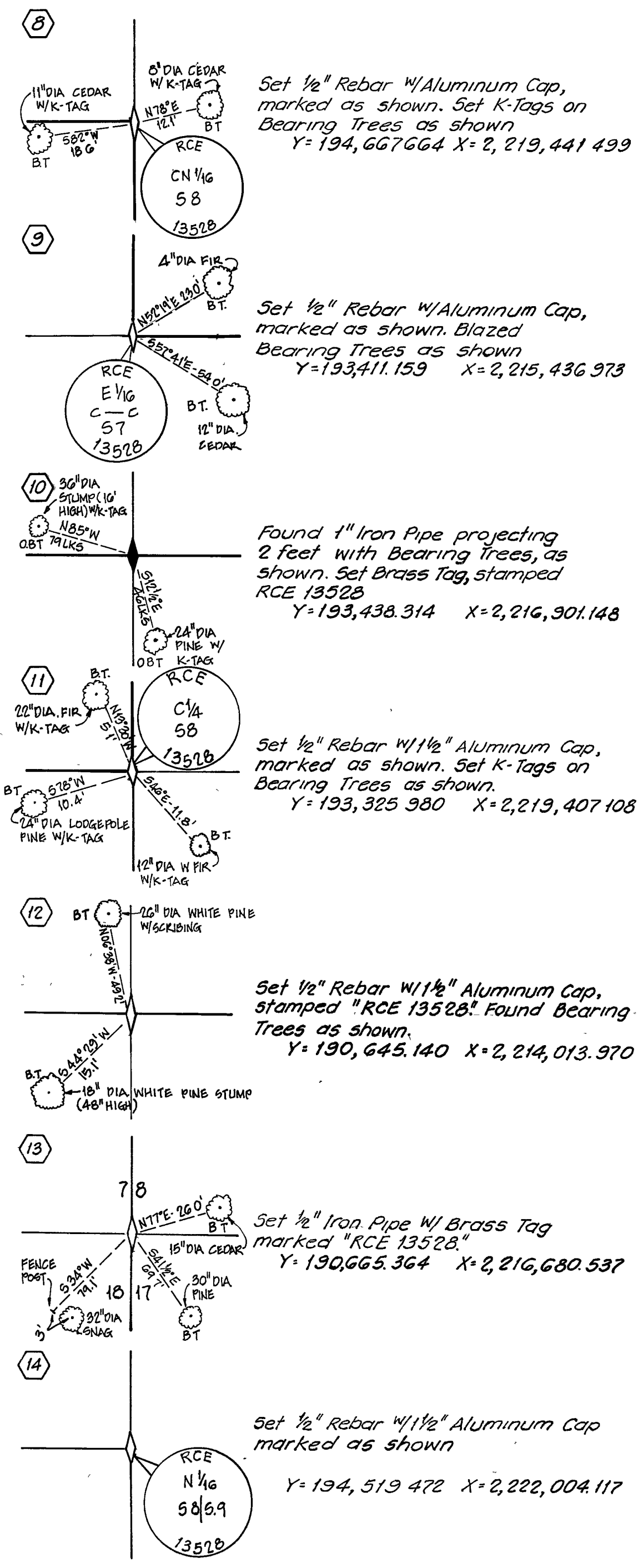
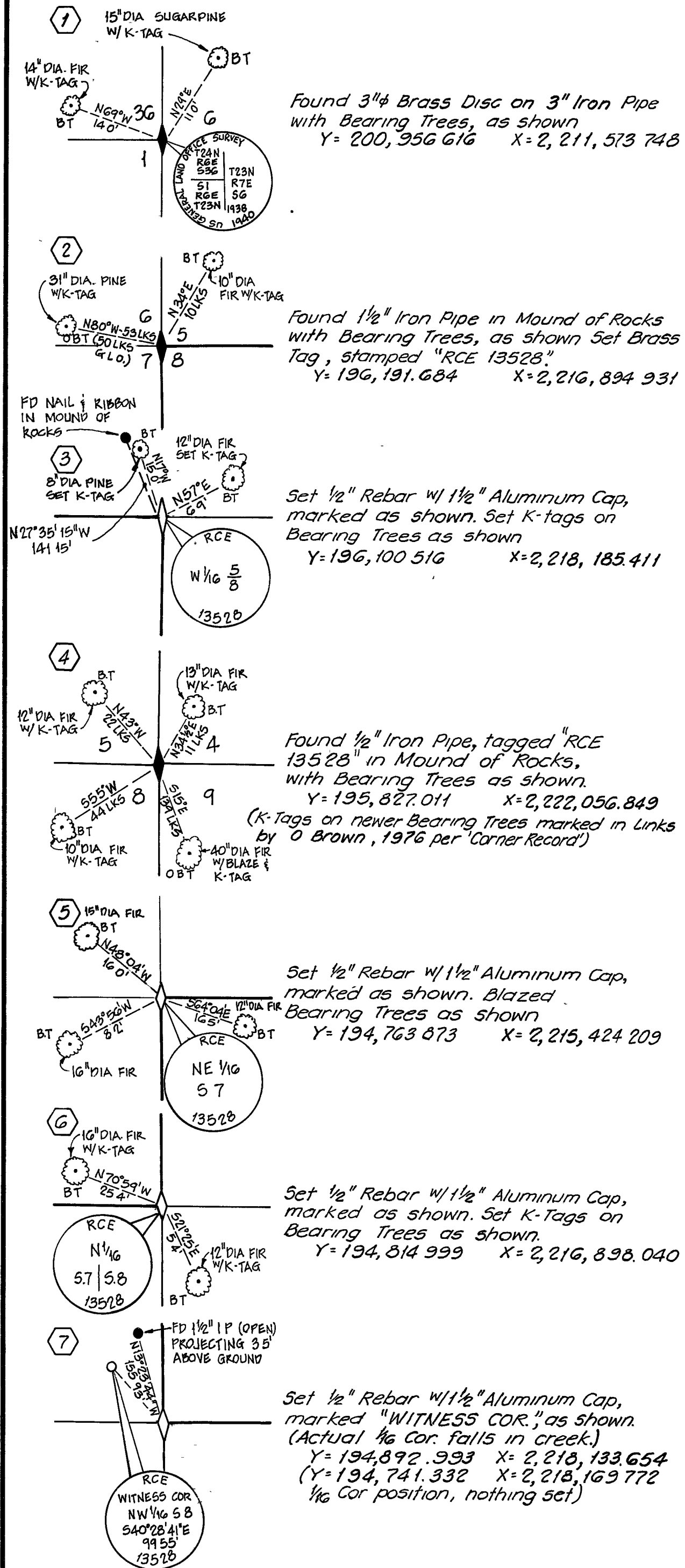


CORNER NOTES



SURVEYOR'S CERTIFICATE

This map correctly represents a survey made under my supervision in conformance with the requirements of the Land Surveyor's Act in November, 1980 at the request of the Plumas County Board of Supervisors.

Lawrence J. Brock
Lawrence J. Brock RCE 13528
PLUMAS COUNTY SURVEYOR

COUNTY SURVEYOR'S CERTIFICATE

This map has been examined this 8th day of January, 1982 for conformance with the requirements of the Land Surveyor's Act.

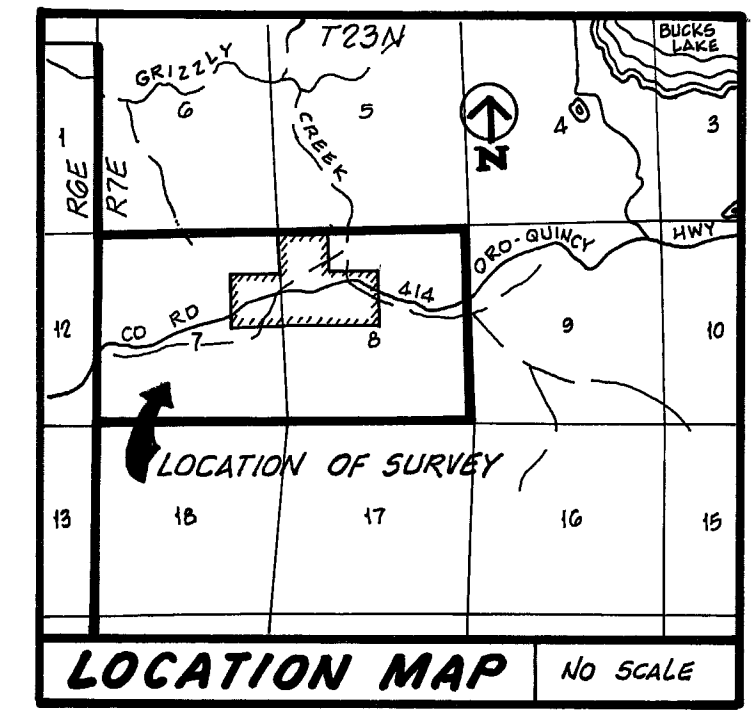
Lawrence J. Brock
Lawrence J. Brock RCE 13528
PLUMAS COUNTY SURVEYOR

RECORDER'S CERTIFICATE

Filed this 8th day of January, 1982 at 4:25 PM in Book 5 of Records of Survey at Page 42 at the request of the Plumas County Engineer.

Fee: \$ No Fee
File No: 5325

Ila Diggs
PLUMAS COUNTY RECORDER
by Isabelle Andruwe
Deputy



RECORD OF SURVEY
SECTIONS 7 & 8, TOWNSHIP 23 NORTH, RANGE 7 EAST
MDM
PLUMAS COUNTY, CALIFORNIA
FOR THE PLUMAS COUNTY BOARD OF SUPERVISORS
NOVEMBER, 1980 SHEET 1 OF 2