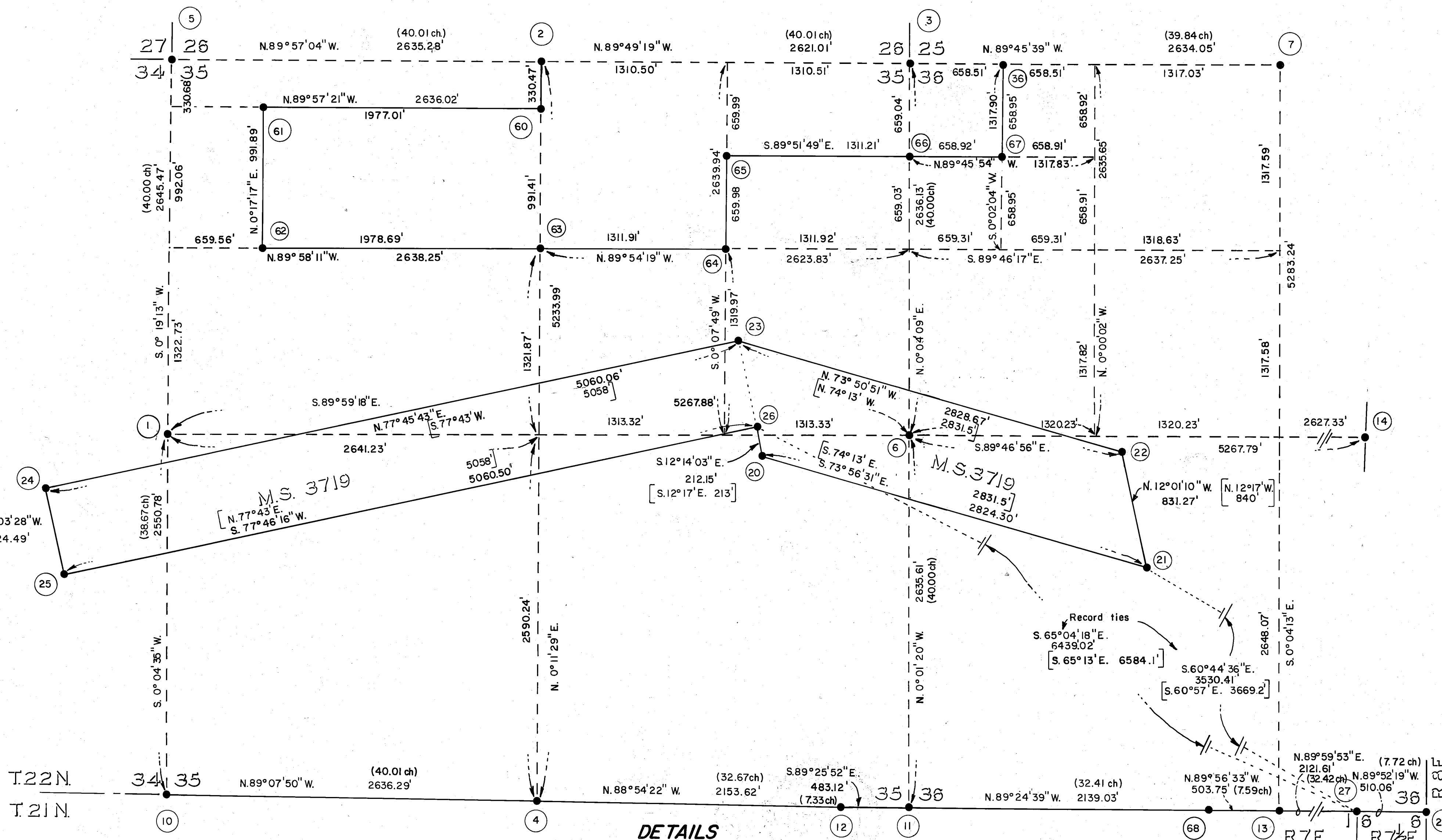
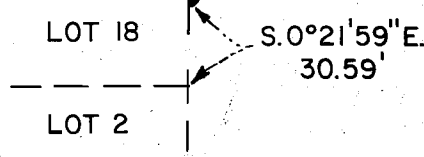


SCALE: 1"=500'



DETAILS



RECORD OF SURVEY
FOR LOUISIANA PACIFIC CORP. & THE PLUMAS
NATIONAL FOREST OF SECTIONS 25, 26, 35 & 36
T. 22 N., R. 7 E. M.D.M. COUNTY OF PLUMAS, CAL.
 DAWSON - BURGESS LAND SURVEYS, INC. REDDING, CALIFORNIA
 SPRING 1981 SHEET 2 OF 3