

CORNER NOTES

- ① 1/4 Cor. Sec's 8&17, Record a 14x10x7" stone, a 5" pine S 6° W 14 lks., a 4" fir N 2° W 7 lks. Found a 15x12x7" stone Mkd. with 1/4, a dead and down 9" pine S 6° W 14 lks. Mkd. 1/4 SBT. Set a standard U.S.F.S. monument, a 10" fir S 21° W 15.2' Mkd. 1/4 S 17 BT, a 21" fir N 42° E 20.0' Mkd. 1/4 S 8 BT.
- ② Sec. cor. 8,9,16&17, Record a 16x12x7" lava stone, a 8" cottenwood S 3° E 355 lks., a 4" fir S 79° W 99 lks. a 40" fir N 44 1/2° W 104 lks. Found a 29" stump with closed blaze, opened and found mks. (NR 8 E S 17 BT) At record Bearing and distance (N 79° E 99 lks.) Set a standard U.S.F.S. monument, a 19" pine N 15 1/2° W 49.0' Mkd. T 22 N R 8 E S 8 BT, a 17" pine S 39° W 13.0' Mkd. T 22 N R 8 E S 17 BT, a 18" fir N 81 1/2° E 20.0' Mkd. T 22 N R 8 E S 9 BT, a 12" fir S 22 1/2° E 87.0' Mkd. T 22 N R 8 E S 16 BT.
- ③ NE 1/16 Cor. Sec. 17, Set a standard U.S.F.S. monument, a 6 cedar S 74° W 25.9' Mkd. NE 1/16 S 17 BT, a 9" fir N 83 1/2° E 24.8' Mkd. NE 1/16 S 17 BT.
- ④ N 1/16 Cor. Sec. 16&17, Set a standard U.S.F.S. monument, a 20" fir S 49° E 26.2' Mkd. N 1/16 S 16 BT, a 21" fir S 72 1/2° W 29.3' Mkd. N 1/16 S 17 BT.
- ⑤ Line tree. Record a 30" spruce, found a 66" fir snag with two hacks on the north and south sides.
- ⑥ 1/4 Cor. Sec's. 16&17, Record 17x11x7" granite stone, with stone mound alongside, a 20" fir S 46 1/2° E 56 lks., a 12" fir S 30° W 36 lks., Found a 19x10x8" granite stone mkd. with 1/4, and stone mound alongside, a 36" fir stump S 46 1/2° E 56 lks. with open blaze and BT visible. Set a standard U.S.F.S. monument, a 24" fir S 61° E 28.5' Mkd. 1/4 S 16 BT, a 19" fir S 71° W 41.5' Mkd. 1/4 S 17 BT.
- ⑦ CE 1/16 Cor. Sec. 17, Set a standard U.S.F.S. monument, a 22" fir N 9 1/2° E 26.7' Mkd. CE 1/16 S 17 BT, a 27" fir S 31 1/2° W 41.5' Mkd. CE 1/16 S 17 BT.
- ⑧ CS 1/16 Cor. Sec. 17, Set a standard U.S.F.S. monument, a 15" fir N 63 1/2° W 25.4' Mkd. CS 1/16 S 17 BT, a 10" cedar S 25° W 26.0' Mkd. CS 1/16 S 17 BT.
- ⑨ SE 1/16 Cor. Sec. 17 Set a standard U.S.F.S. monument, a 9" oak N 77 1/2° E 17.0' Mkd. SE 1/16 S 17 BT, a 19" fir S 85 1/2° W 52.3' Mkd. SE 1/16 S 17 BT.
- ⑩ Sec. cor. 16,17,20&21, Record 20x10x10" quartz stone with stone mound alongside, a 47" pine N 49° W 84 lks., a 38" fir N 36 1/2° E 98 lks., a 40" fir S 48 1/2° E 34 lks., a 28" fir S 24° W 23 lks. Found 20x10x6" quartz stone with stone mound alongside, a 60" fir S 48 1/2° E 34 lks., with healed blaze, at record bearing and distance found stumps of the other BT's. Set a standard U.S.F.S. monument, a 17" fir N 62° W 37.5' Mkd. T 22 N R 8 E S 17 BT, a 40" pine S 7° E 70.9' Mkd. T 22 N R 8 E S 21 BT.
- ⑪ 1/4 Cor. Sec's. 17&20, Record 14x12x10" granite stone mkd. 1/4 with stone mound alongside, a 48" pine S 27° W 43 lks., a 18" fir N 48° W 46 lks. corner stone not found (destroyed by logging), Found dead and down 22" fir with old blaze, opened and found 1/4 SBT, At record bearing and distance located corner point, and found a 50" pine stump S 27° W 43 lks. Set a standard U.S.F.S. monument, a 17" fir N 38° W 10.4' Mkd. 1/4 S 17 BT, a 18" fir S 61° E 44.6' Mkd. 1/4 S 20 BT.
- ⑫ 1/4 Cor. Sec's. 17&18, Record a 40" fir tree corner, a 14" fir S 37° E 54 lks., a 14" fir N 69° W 52 lks. Found a 61" fir stump, a 41" fir stump S 37° E 54 lks. with old blaze Mkd. 1/4 SBT, a 39" fir stump N 69° W 52 lks., From corner tree stump, a 20" cedar S 67° W 80.7' Mkd. 1/4 S 18 BT, a 37" pine N 72° E 68.2' Mkd. 1/4 S 17 BT. Set a standard U.S.F.S. monument S 50° 26' 38" E 14' as a Reference Monument.

SCALE : 1" = 500'

BASIS OF BEARING
 IS TRUE NORTH AS DETERMINED BY SOLAR OBSERVATION ON JULY 7, 1978 AT 8:37 A.M. PACIFIC STANDARD TIME, TAKEN AT THE WEST 1/4 CORNER.

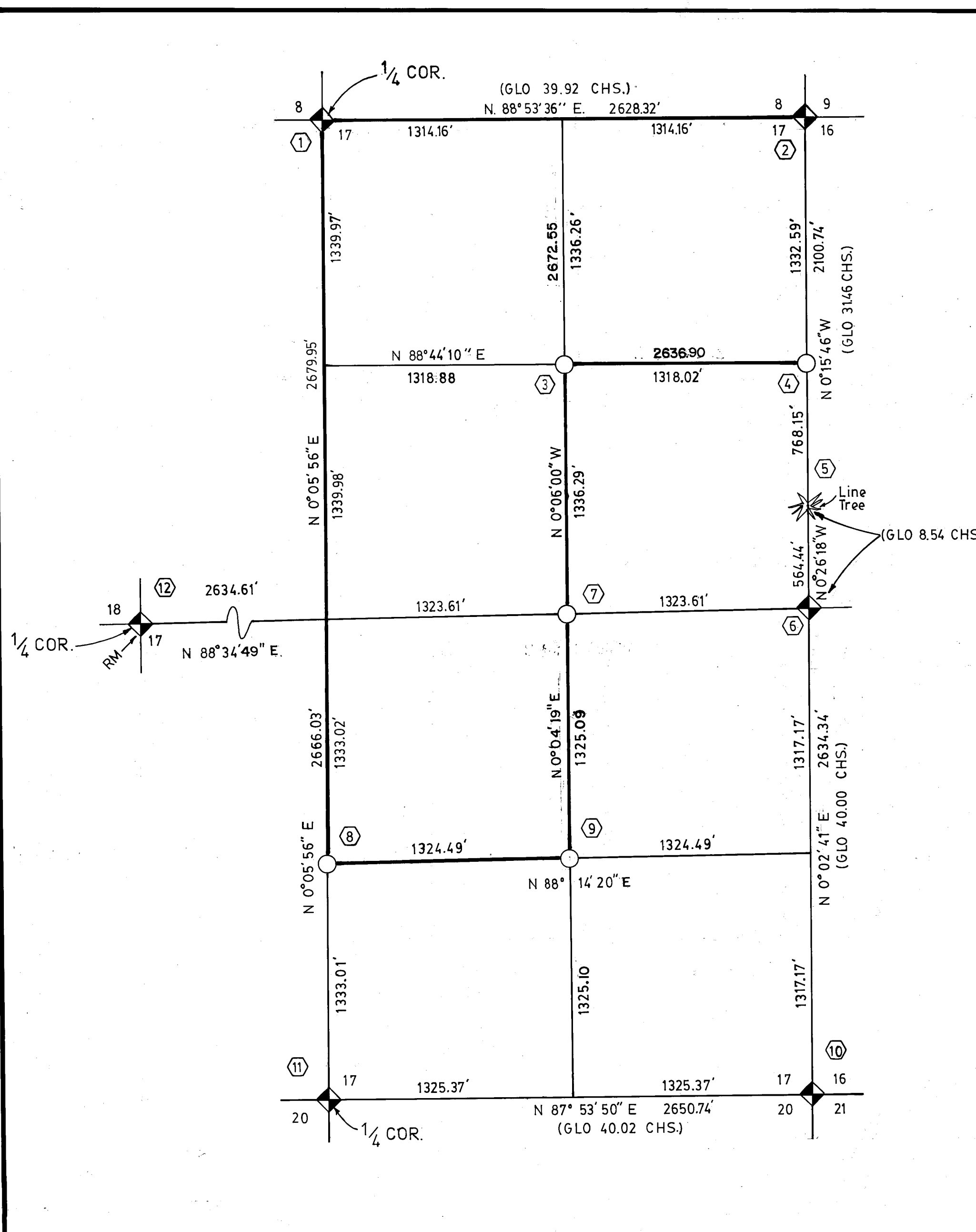
NOTES :
 STANDARD U.S.F.S. MONUMENTS SET IN THIS SURVEY ARE 2 1/2" ALUMINUM PIPES 30" LONG WITH A 3" CAP AND CAST FLANGED BREAK AWAY BASE STAMPED WITH APPROPRIATE CORNER DESIGNATION, L.S. 4481, 1978.

LEGEND
 — LINES MARKED AND POSTED (NATIONAL FOREST BOUNDARY)
 ◆ FOUND CORNERS
 ○ CORNERS SET
 (G.L.O.) DATA FROM GOVERNMENT LAND OFFICE NOTES BY D.D. HALL 1884
 RM REFERENCE MONUMENT
 U.S.F.S. UNITED STATES FOREST SERVICE

RECORD OF SURVEY

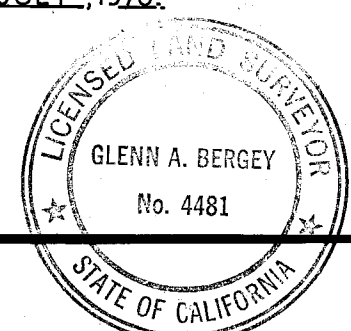
SECTION 17, T.22 N., R.8 E., M.D.M., IN THE UNINCORPORATED AREA OF PLUMAS COUNTY, CALIFORNIA FOR THE PLUMAS NATIONAL FOREST.

SHEET 1 OF 1 SHEET



SURVEYOR'S CERTIFICATE
 This map correctly represents a survey made by me or under my direction in conformance with the requirements of the Land Surveyor's Act at the request of THE FOREST SUPERVISOR PLUMAS NATIONAL FOREST in JULY, 1978.

Glenn A. Bergey 5/7/81
 Glenn A. Bergey L.S. 4481



COUNTY SURVEYOR'S CERTIFICATE
 This map has been examined for conformance with the requirements of the Land Surveyor's Act this 25 day of August, 1981.

Lawrence J. Brock
 Lawrence J. Brock R.C.E. 13528
 Plumas County Surveyor

RECORDER'S CERTIFICATE
 Filed this 28th day of August 1978 at 2:12 P.M. in Book 6 of Record of Surveys page 17 at the request of the County Engineer.

Ila Diggs
 County Recorder
 By *Isabelle Andrews*
 Deputy

Fee \$5.00
 File No. 1365

UNITED STATES DEPARTMENT OF AGRICULTURE
 FOREST SERVICE
 PACIFIC SOUTHWEST REGION
 630 SANSOME STREET
 SAN FRANCISCO, CALIFORNIA

GLENN A. BERGEY REGIONAL LAND SURVEYOR
 (415) 556-7442