

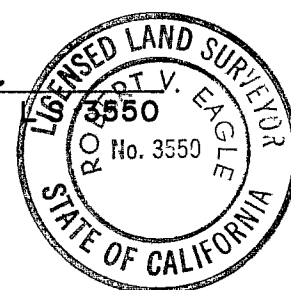
# RECORD OF SURVEY

FOR DONALD K. LEE, ET AL, SHOWING THE ESTABLISHMENT OF THE LOST ONE -  
QUARTER CORNER COMMON TO SECTIONS 15 AND 16, TOWNSHIP 29 NORTH,  
RANGE 6 EAST, M. D. M.

## SURVEYOR'S CERTIFICATE

THIS MAP CORRECTLY REPRESENTS A SURVEY MADE BY  
ME OR UNDER MY DIRECTION IN CONFORMANCE WITH  
THE REQUIREMENTS OF THE LAND SURVEYOR'S ACT  
AT THE REQUEST OF DONALD K LEE IN MAY, 1980.

*Robert V. Eagle*  
ROBERT V. EAGLE



## COUNTY RECORDER'S CERTIFICATE

FILED THIS 16<sup>th</sup> DAY OF June, 1980, AT 11:10 AM.  
IN BOOK 5 OF RECORD OF SURVEYS AT PAGE 115,  
AT THE REQUEST OF THE COUNTY ENGINEER.

ILA DIGGS, COUNTY RECORDER

FEE \$ 5.00

FILE NO. 9692

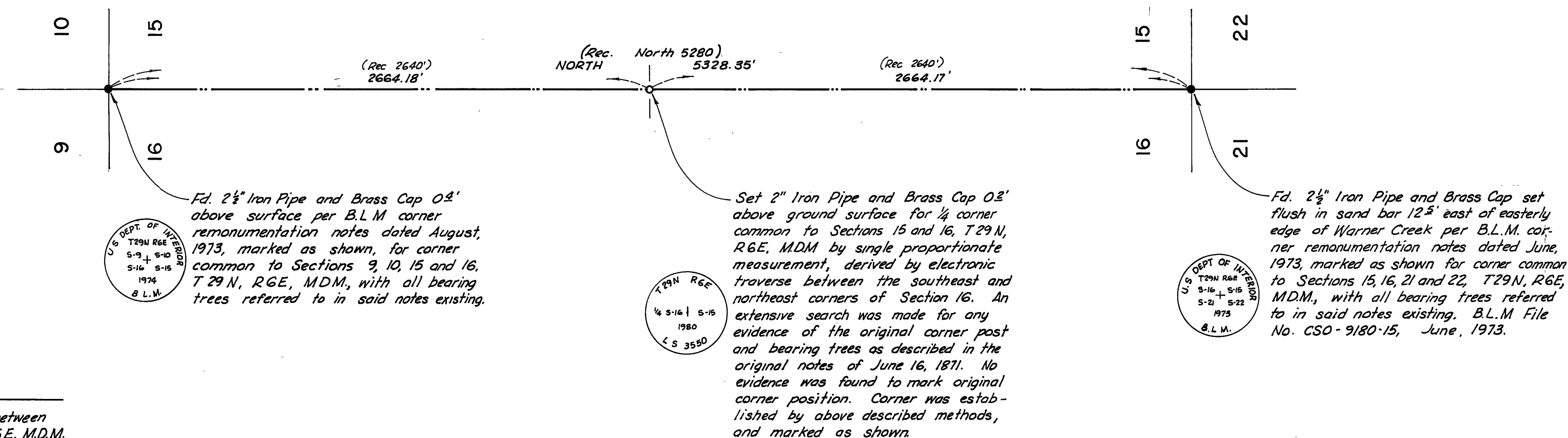
BY *Frances Neal*  
DEPUTY

## COUNTY SURVEYOR'S CERTIFICATE

THIS MAP HAS BEEN EXAMINED FOR CONFORMANCE  
WITH THE REQUIREMENTS OF THE LAND SURVEYOR'S  
ACT THIS 16<sup>th</sup> DAY OF June, 1980.

DATED June 16, 1980

*Lawrence J. Brock*  
LAWRENCE J. BROCK R.C.E. 13528  
PLUMAS COUNTY SURVEYOR  
By *R. Tom Hunter* R.C.E. 30515



FLOWERS & EAGLE

CHESTER, CALIFORNIA

June, 1980

SHEET 1 OF 1