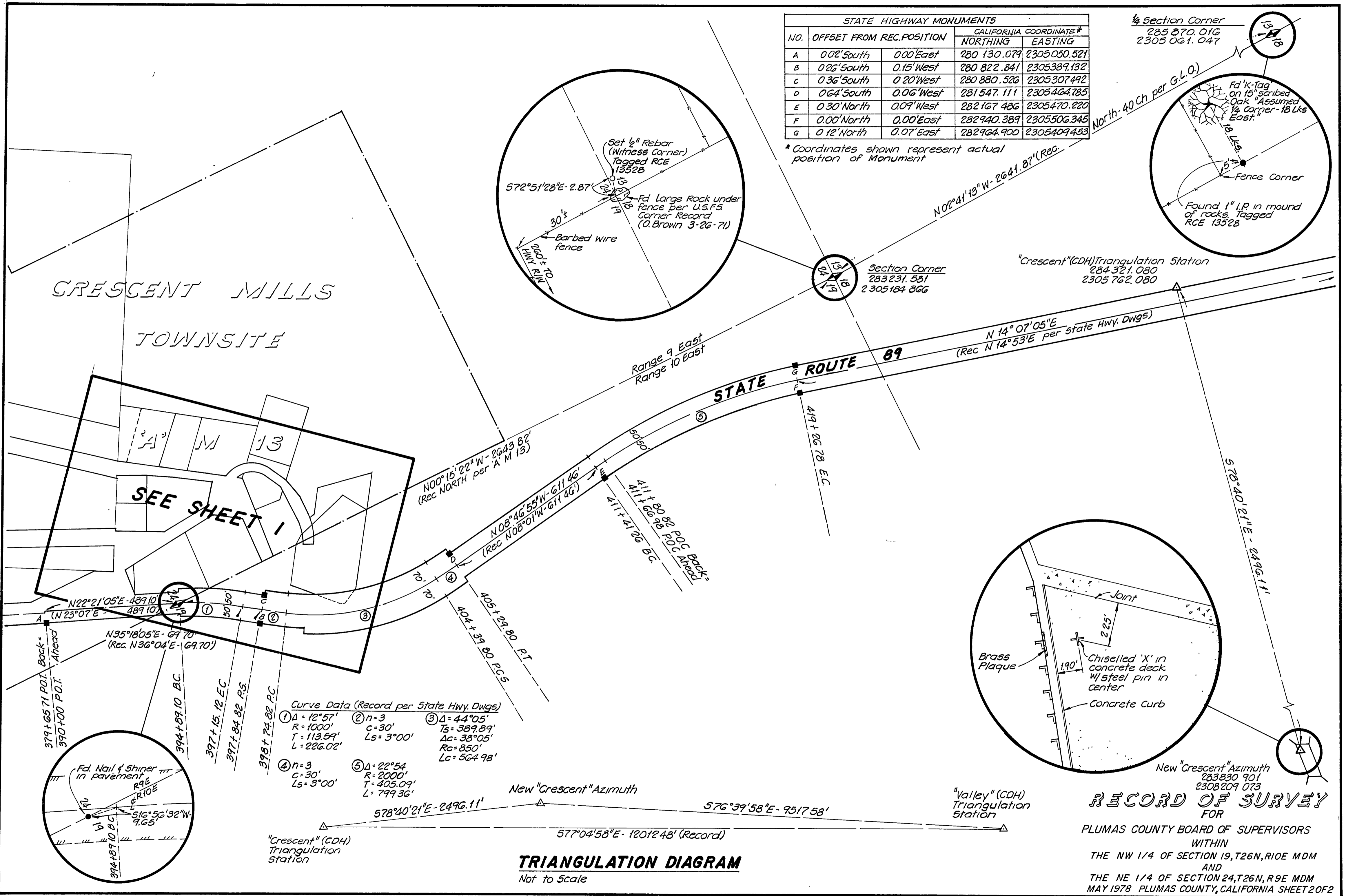
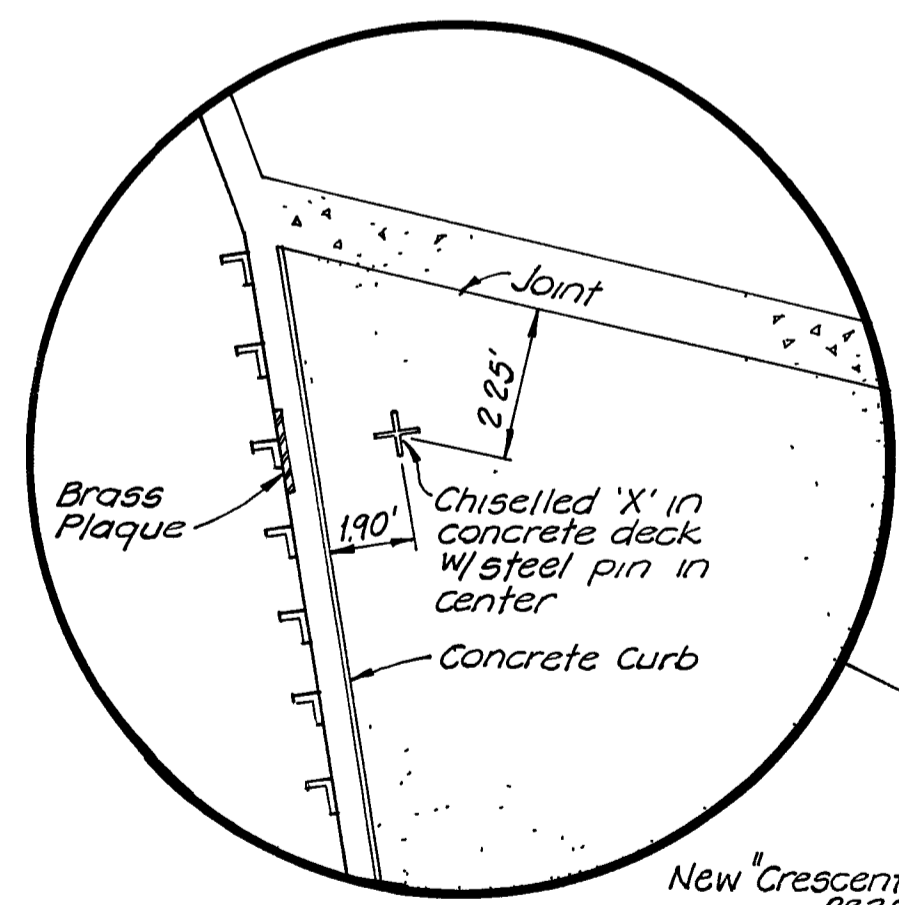
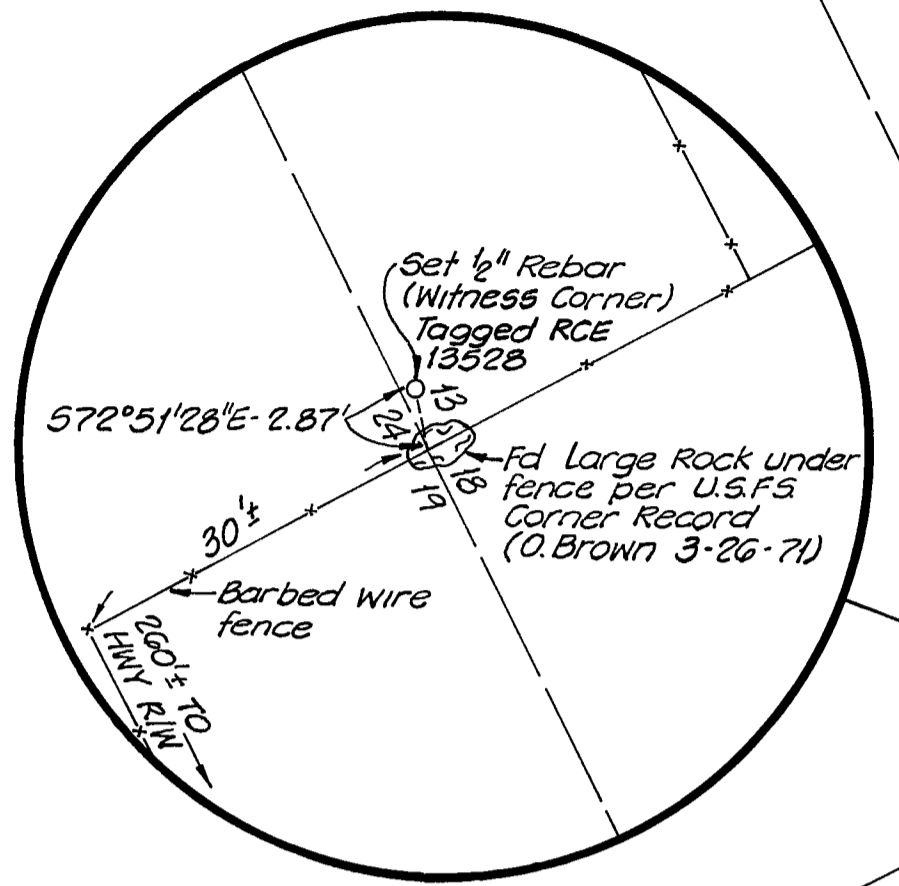
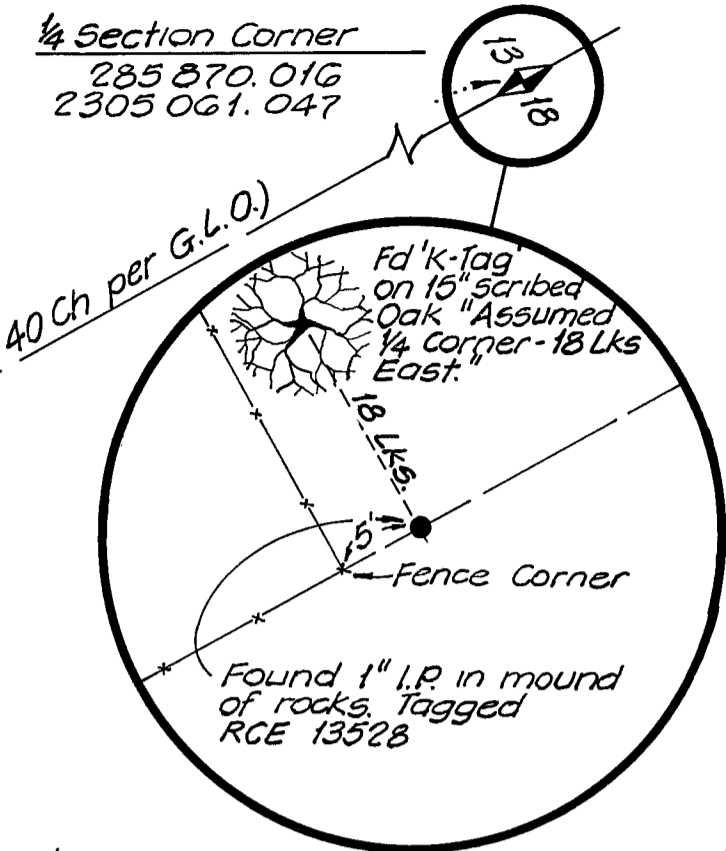


STATE HIGHWAY MONUMENTS				
NO.	OFFSET FROM REC. POSITION		CALIFORNIA COORDINATE*	
			NORTHING	EASTING
A	0.02' South	0.00' East	280 130.079	2305 050.521
B	0.26' South	0.15' West	280 822.841	2305 389.132
C	0.36' South	0.20' West	280 880.526	2305 307.492
D	0.64' South	0.06' West	281 547.111	2305 464.785
E	0.30' North	0.09' West	282 167.486	2305 470.220
F	0.00' North	0.00' East	282 940.389	2305 506.345
G	0.12' North	0.07' East	282 964.900	2305 409.453

* Coordinates shown represent actual position of Monument



Curve Data (Record per State Hwy. DWGS)

① Δ = 12° 57'	② n = 3	③ Δ = 44° 05'
R = 1000'	c = 30'	Ts = 389.89'
T = 113.59'	Ls = 3° 00'	Δc = 38° 05'
L = 226.02'		Rc = 850'
		Lc = 564.98'
④ n = 3	⑤ Δ = 22° 54'	
c = 30'	R = 2000'	
Ls = 3° 00'	T = 405.09'	
	L = 799.36'	

TRIANGULATION DIAGRAM
Not to Scale

RECORD OF SURVEY
FOR
PLUMAS COUNTY BOARD OF SUPERVISORS
WITHIN
THE NW 1/4 OF SECTION 19, T26N, R10E MDM
AND
THE NE 1/4 OF SECTION 24, T26N, R9E MDM
MAY 1978 PLUMAS COUNTY, CALIFORNIA SHEET 2 OF 2