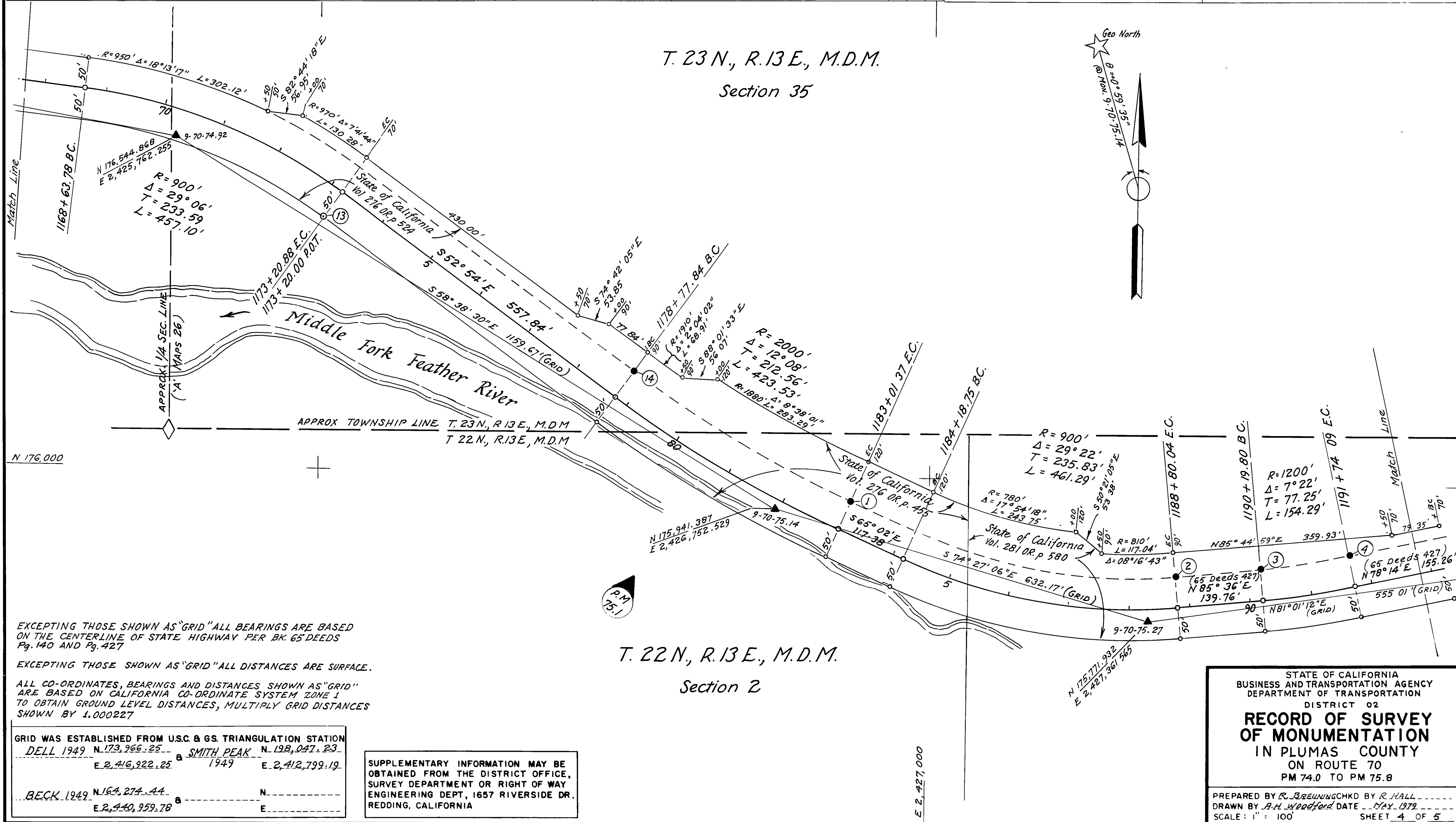


- FOUND POINTS -

SEC	PT	COORDINATES		DESCRIPTION	RECORDED AT	BK	OF	PG	SEC	PT	COORDINATES		DESCRIPTION	RECORDED AT	BK	OF	PG
		NORTH	EAST								NORTH	EAST					
35	13	176,414.033	2426,004.527	R/W Mon													
"	14	176,166.967	2426,513.636	R/W Mon													
2	1	175,961.109	2426,871.507	R/W Mon													
"	2	175,844.373	2427,404.595	R/W Mon													
"	3	175,858.318	2427,543.502	R/W Mon													
"	4	175,881.943	2427,689.416	R/W Mon													

- LEGEND -

- ▲ SURVEY MONUMENT, SET STANDARD BRASS DISK IN CONCRETE, STAMPED AS NOTED.
- PROPERTY MONUMENT FOUND AND REMOVED.
- ◆ SECTION OR FRACTIONAL CORNER, FOUND
- ◆ SECTION OR FRACTIONAL CORNER, NOT LOCATED.
- MONUMENT, SET T-BAR W/TAG, "DIST SURV ENGR"
- MONUMENT, AS NOTED.
- NO MONUMENT SET.
- ⊙ PROPERTY MONUMENT, FOUND



EXCEPTING THOSE SHOWN AS "GRID" ALL BEARINGS ARE BASED ON THE CENTERLINE OF STATE HIGHWAY PER BK. 65 DEEDS Pg. 140 AND Pg. 427

EXCEPTING THOSE SHOWN AS "GRID" ALL DISTANCES ARE SURFACE.

ALL CO-ORDINATES, BEARINGS AND DISTANCES SHOWN AS "GRID" ARE BASED ON CALIFORNIA CO-ORDINATE SYSTEM ZONE 1 TO OBTAIN GROUND LEVEL DISTANCES, MULTIPLY GRID DISTANCES SHOWN BY 1.000227

GRID WAS ESTABLISHED FROM U.S.C. & G.S. TRIANGULATION STATION			
DELL 1949	N 173,266.25	SMITH PEAK	N 198,047.23
	E 2,416,222.25	1949	E 2,412,799.19
BECK 1949	N 164,274.44		N
	E 2,440,959.78		E

SUPPLEMENTARY INFORMATION MAY BE OBTAINED FROM THE DISTRICT OFFICE, SURVEY DEPARTMENT OR RIGHT OF WAY ENGINEERING DEPT, 1657 RIVERSIDE DR. REDDING, CALIFORNIA

STATE OF CALIFORNIA  
BUSINESS AND TRANSPORTATION AGENCY  
DEPARTMENT OF TRANSPORTATION  
DISTRICT 02

**RECORD OF SURVEY  
OF MONUMENTATION**  
IN PLUMAS COUNTY  
ON ROUTE 70  
PM 74.0 TO PM 75.8

PREPARED BY R. BREUNINGCHKD BY R. HALL  
DRAWN BY R.H. Woodford DATE MAY 1979  
SCALE: 1" = 100' SHEET 4 OF 5