

- FOUND POINTS -

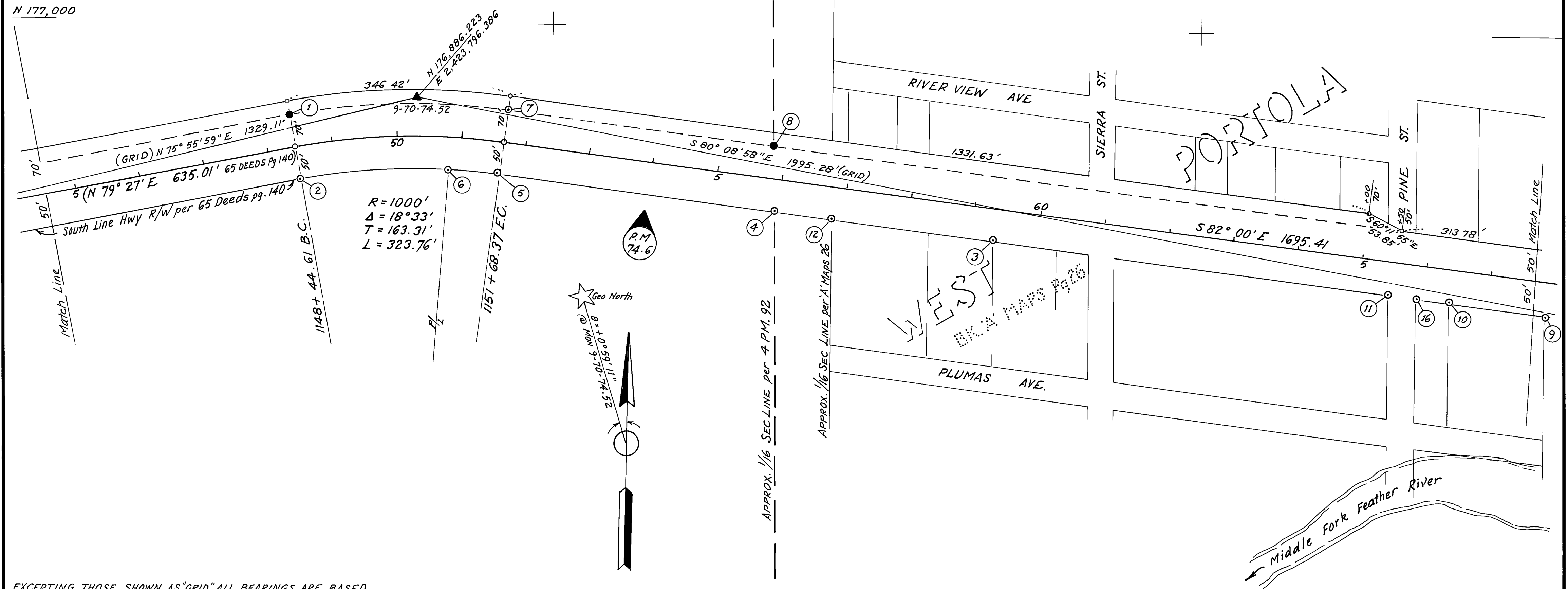
SEC	PT	COORDINATES		DESCRIPTION	RECORDED AT			SEC	PT	COORDINATES		DESCRIPTION	RECORDED AT		
		NORTH	EAST		BK	OF	PG			NORTH	EAST		BK	OF	PG
35	1	176,858.829	2423,597.953	R/W MON.				35	9	176,579.691	2425,530.693	3/4" ID IP. W/PLUG & TAG LS 2843			
"	2	176,761.392	2423,617.974	" "				"	10	176,597.506	2425,382.526	" " " TAG GONE			
"	3	176,682.760	2424,678.792	AXLE				"	11	176,608.442	2425,289.412	1/2" ID IP.			
"	4	176,723.604	2424,343.459	1" ID. CONDUIT PIPE W/PLUG & TAG LS 3297				"	12	176,712.948	2424,430.624	1/4" " "			
"	5	176,774.474	2423,922.402	R/W MON				"	16	176,603.427	2425,332.846	3/4" IP W/TAG 22148			
"	6	176,780.418	2423,846.611	1/2" ID IP W/PLUG & TAG LS 3297											
"	7	176,872.954	2423,937.950	R/W MON											
"	8	176,824.104	2424,341.576	3/4" ID IP. W/PLUG & TAG LS 3297											

- LEGEND -

- ▲ SURVEY MONUMENT, SET STANDARD BRASS DISK IN CONCRETE, STAMPED AS NOTED.
- PROPERTY MONUMENT FOUND AND REMOVED.
- ◆ SECTION OR FRACTIONAL CORNER, FOUND
- ◆ SECTION OR FRACTIONAL CORNER, NOT LOCATED.
- MONUMENT, SET T-BAR W/TAG, "DIST. SURV ENGR"
- MONUMENT, AS NOTED.
- NO MONUMENT SET.
- ⊙ PROPERTY MONUMENT, FOUND.

T. 23 N., R. 13 E., M.D.M.

Section 35



EXCEPTING THOSE SHOWN AS "GRID" ALL BEARINGS ARE BASED ON THE CENTERLINE OF STATE HIGHWAY PER BK 65 DEEDS Pg 140 AND Pg. 427.

EXCEPTING THOSE SHOWN AS "GRID" ALL DISTANCES ARE SURFACE. ALL CO-ORDINATES, BEARINGS AND DISTANCES SHOWN AS "GRID" ARE BASED ON CALIFORNIA CO-ORDINATE SYSTEM ZONE 1. TO OBTAIN GROUND LEVEL DISTANCES, MULTIPLY "GRID" DISTANCES SHOWN BY 1.000227

GRID WAS ESTABLISHED FROM U.S.C. & G.S. TRIANGULATION STATION			
DELL 1949	N 173,966.25	SMITH PEAK	N 198,047.23
	E 2,416,922.25	1949	E 2,412,799.19
BECK 1949	N 164,274.44		N
	E 2,440,959.78		E

SUPPLEMENTARY INFORMATION MAY BE OBTAINED FROM THE DISTRICT OFFICE, SURVEY DEPARTMENT OR RIGHT OF WAY ENGINEERING DEPT, 1657 RIVERSIDE DR. REDDING, CALIFORNIA

STATE OF CALIFORNIA  
 BUSINESS AND TRANSPORTATION AGENCY  
 DEPARTMENT OF TRANSPORTATION  
 DISTRICT 02  
**RECORD OF SURVEY  
 OF MONUMENTATION**  
 IN PLUMAS COUNTY  
 ON ROUTE 70  
 PM 74.0 TO PM 75.8

PREPARED BY R. BREUNINGCHKD. BY R. HALL  
 DRAWN BY B. H. Woodford DATE May 1979  
 SCALE: 1" = 100' SHEET 3 OF 5