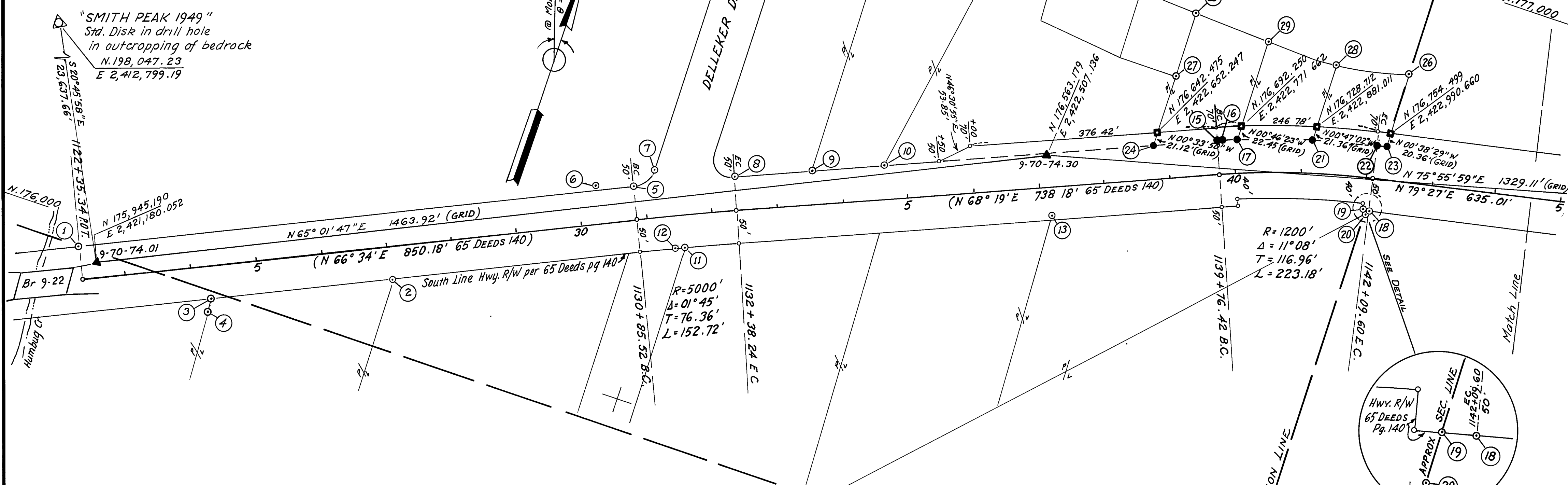


- FOUND POINTS -

- LEGEND -

SEC	PT	COORDINATES		DESCRIPTION	RECORDED AT BK OF PG	SEC	PT	COORDINATES		DESCRIPTION	RECORDED AT BK OF PG
		NORTH	EAST					NORTH	EAST		
34	1	175,959.397	2421,148.973	R/W Mon.		34	22	176,731.067	2422,976.105	R/W Mon	
"	2	176,064.841	2421,622.407	1/2" Re-Bar		"	23	176,734.139	2422,990.888	3/4" ID IP w/PLUG & TAG R.C.E. 7294	
"	3	175,947.904	2421,365.234	1" I.D. IP w/R.C.E. 7294 CAP		"	24	176,621.356	2422,652.455	3/4" IP L.S. 3202	
"	4	175,927.798	2421,365.572	" " " "		"	25	176,831.671	2422,649.755	3/4" I.P. L.S. 3202	
"	5	176,311.880	2421,923.004	3/4 ID. PIPE		"	26	176,847.924	2422,989.614	" " " "	
"	6	176,293.667	2421,866.778	HUB & TACK		"	27	176,731.672	2422,651.369	" " " "	
"	7	176,346.195	2421,944.741	3/4" ID. PIPE L.S. 2702		"	28	176,825.692	2422,879.684	" " " "	
"	8	176,373.901	2422,064.210	1/2" Re-Bar w/PLASTIC CAP R.C.E. 11173		"	29	176,825.648	2422.769.862	" " " "	
"	9	176,419.404	2422,173.010	" " " "							
"	10	176,462.167	2422,274.392	" " " "							
"	11	176,249.280	2422,028.092	" " " "							
"	12	176,243.754	2422,015.968	3/4" ID. PIPE w/TAG R.C.E. 7294							
"	13	176,473.275	2422,540.919	AXLE AT FENCE CORNER							
"	15	176,659.005	2422,744.602	3/4" ID. IP w/PLUG & TAG L.S. 3202							
"	16	176,661.022	2422,749.818	R/W Mon.							
"	17	176,669.804	2422,771.965	3/4" ID IP w/PLUG & TAG L.S. 3202							
"	18	176,633.289	2422,996.308	R/W Mon.							
"	19	176,632.259	2422,992.406	3/4" ID IP w/PLUG & TAG L.S. 3297							
"	20	176,625.177	2422,992.404	" " " "							
"	21	176,707.355	2422,881.303	3/4" ID IP w/PLUG & TAG L.S. 3202							

- ▲ SURVEY MONUMENT, SET STANDARD BRASS DISK IN CONCRETE, STAMPED AS NOTED.
- PROPERTY MONUMENT FOUND AND REMOVED.
- ◆ SECTION OR FRACTIONAL CORNER, FOUND.
- ◊ SECTION OR FRACTIONAL CORNER, NOT LOCATED.
- MONUMENT, SET T-BAR w/TAG, "DIST. SURV ENGR"
- MONUMENT, AS NOTED.
- NO MONUMENT SET.
- ⊙ PROPERTY MONUMENT, FOUND.



EXCEPTING THOSE SHOWN AS "GRID" ALL BEARINGS ARE BASED ON THE CENTERLINE OF STATE HIGHWAY PER BK. 65 DEEDS Pg. 140 AND Pg. 427.

EXCEPTING THOSE SHOWN AS "GRID" ALL DISTANCES ARE SURFACE

ALL CO-ORDINATES, BEARINGS AND DISTANCES SHOWN AS "GRID" ARE BASED ON CALIFORNIA CO-ORDINATE SYSTEM ZONE 1. TO OBTAIN GROUND LEVEL DISTANCES, MULTIPLY GRID DISTANCES SHOWN BY 1.000227

GRID WAS ESTABLISHED FROM U.S.C. & G.S. TRIANGULATION STATION			
DELL 1949	N. 173,966.25	SMITH PEAK	N. 198,047.23
	E. 2,416,922.25		E. 2,412,799.19
BECK 1949	N. 164,274.44		
	E. 2,440,959.78		

SUPPLEMENTARY INFORMATION MAY BE OBTAINED FROM THE DISTRICT OFFICE, SURVEY DEPARTMENT OR RIGHT OF WAY ENGINEERING DEPT, 1657 RIVERSIDE DR. REDDING, CALIFORNIA

STATE OF CALIFORNIA
BUSINESS AND TRANSPORTATION AGENCY
DEPARTMENT OF TRANSPORTATION
DISTRICT 02
**RECORD OF SURVEY
OF MONUMENTATION**
IN PLUMAS COUNTY
ON ROUTE 70
PM 74.0 TO PM 75.8

PREPARED BY R. BREUNING-CHKD. BY R. HALL
DRAWN BY B.H. Woodford. DATE MAY 1979
SCALE: 1" = 100' SHEET 2 OF 5