

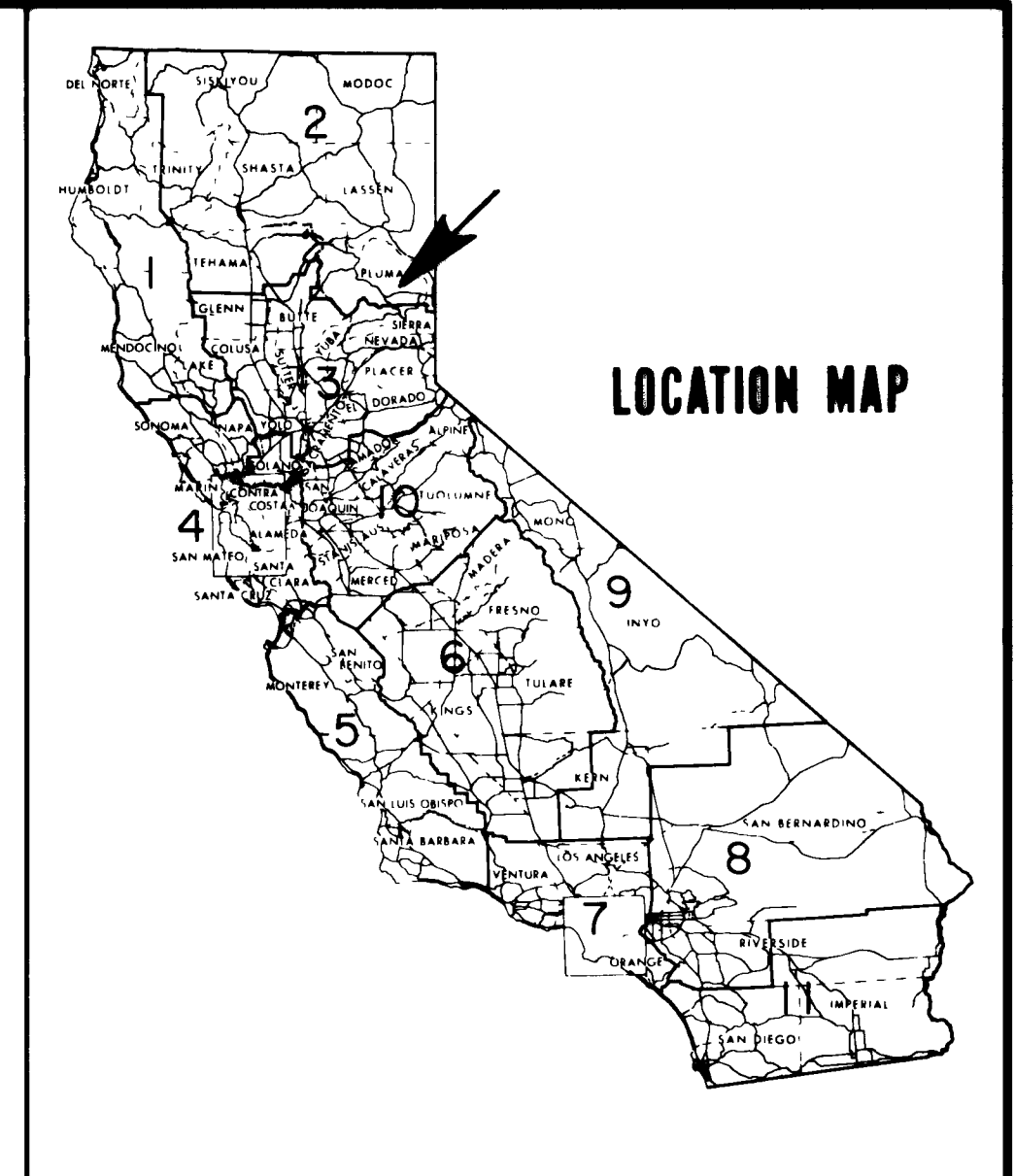
STATE OF CALIFORNIA
BUSINESS AND TRANSPORTATION AGENCY
DEPARTMENT OF TRANSPORTATION

RECORD OF SURVEY
OF MONUMENTATION

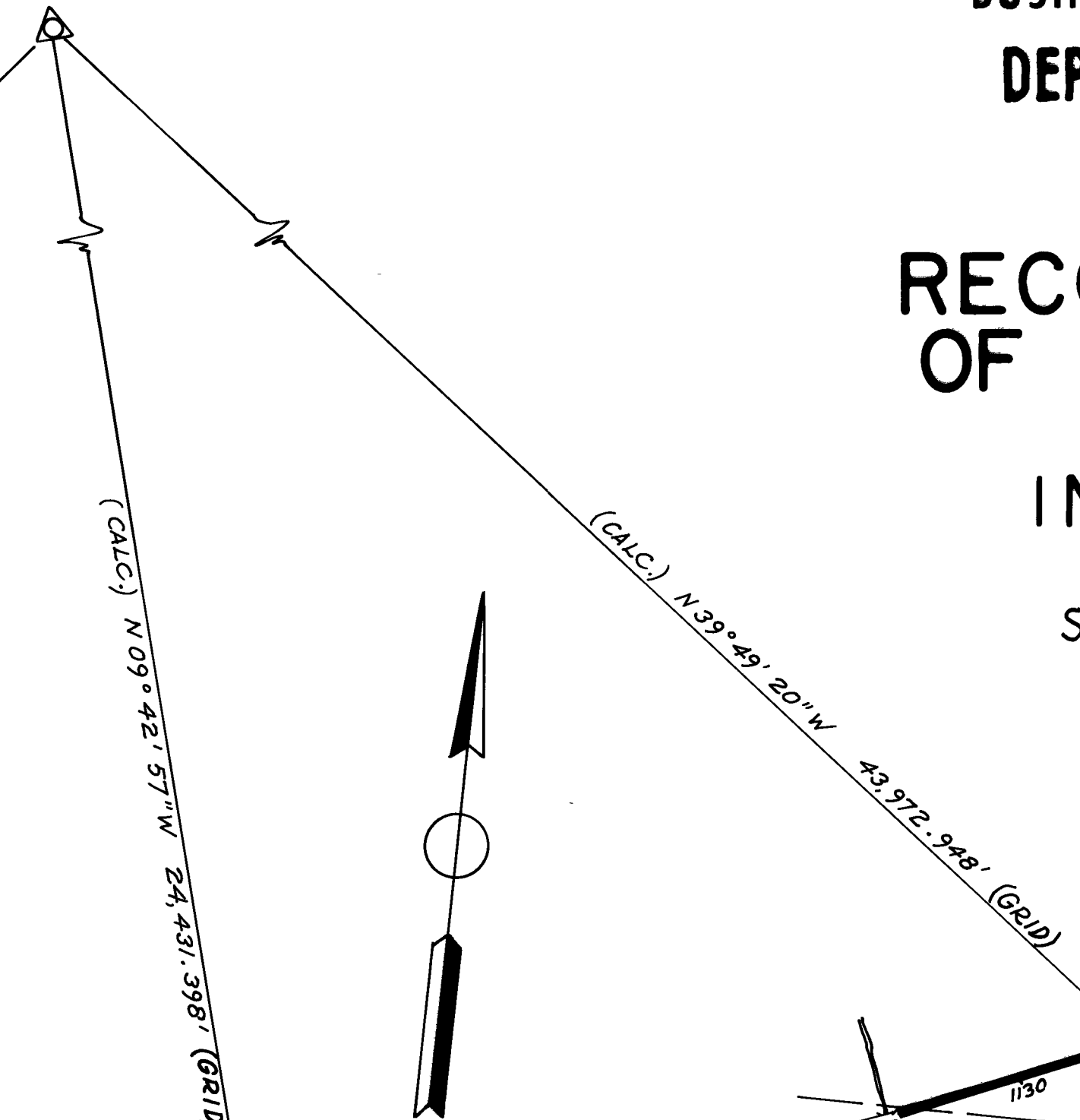
IN PLUMAS COUNTY

ON ROUTE 70

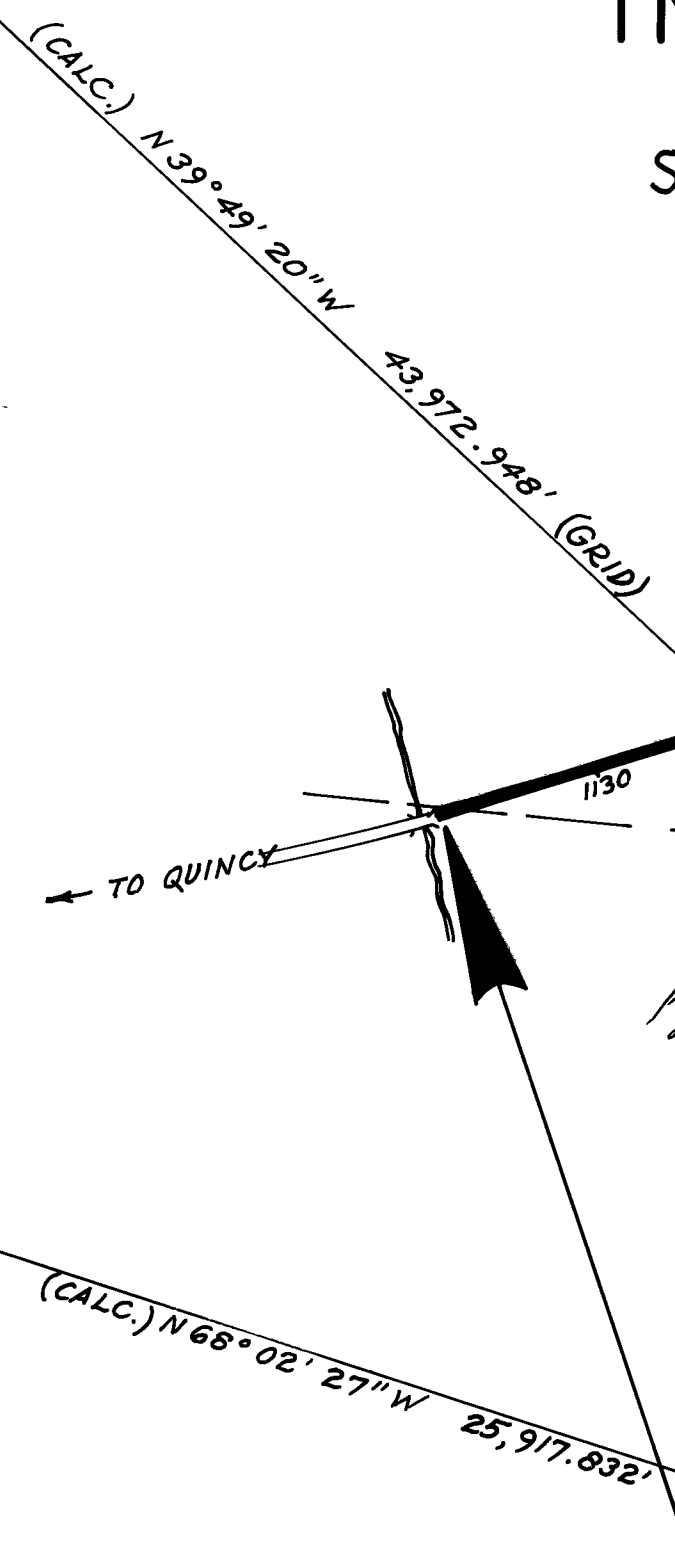
Sections 34, 35, & 36 T. 23 N., R. 13 E., M.D.M.
and Sections 2 & 3 T. 22 N., R. 13 E., M.D.M.



"SMITH PEAK 1949"
Std. Disk in drill hole
in out-cropping of
bedrock.
N. 198,047.23
E. 2,412,799.19



"DELL 1949"
Std. Disk in square
Conc. Post.
N. 173,966.25
E. 2,416,922.25

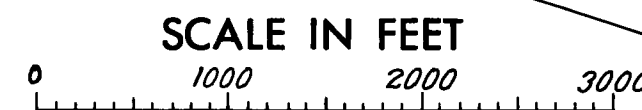


Beginning of Monumentation Project

Station 1122 + 35
P.M. 74.0

End of Monumentation Project

Station 1215 + 80
P.M. 75.8



"BECK 1949"
Std. Disk in drill
hole in boulder
N. 164,274.44
E. 2,440,959.78

SURVEYOR'S CERTIFICATE
THIS MAP CORRECTLY REPRESENTS A SURVEY MADE BY ME
OR UNDER MY DIRECTION IN CONFORMANCE WITH THE
REQUIREMENTS OF THE LAND SURVEYOR'S ACT AT THE
REQUEST OF DEPARTMENT OF TRANSPORTATION
IN MAY, 1979.

Don Straub
DON STRAUB R.C.E. 15373
DISTRICT SURVEY & RIGHT OF WAY ENGINEER



COUNTY SURVEYOR'S CERTIFICATE
THIS MAP HAS BEEN EXAMINED FOR CONFORMANCE WITH THE
REQUIREMENTS OF THE LAND SURVEYOR'S ACT THIS 27th
DAY OF August, 1979.

Lawrence J. Brock
PLUMAS COUNTY SURVEYOR
LAWRENCE J. BROCK RCE 13528
BY DEPUTY COUNTY SURVEYOR

RECORDER'S CERTIFICATE
FILED THIS 28th DAY OF August, 1979, AT 11:32 A.M.
IN BOOK 5 OF RS AT PAGE 66,
AT THE REQUEST OF THE COUNTY ENGINEER

Fee None COUNTY RECORDER
File No 1973
BY *Frances Nicol*
DEPUTY COUNTY RECORDER