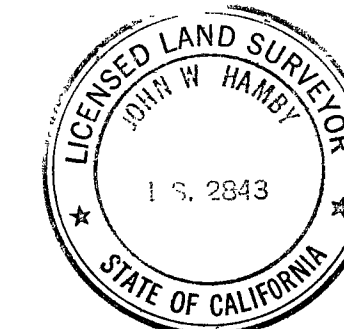


SURVEYOR'S CERTIFICATE

This map correctly represents a survey made by me or under my direction in conformance with the requirements of the Land Surveyors Act at the request of Frank & Ethel Nervino and Herbert & Janice Bishop in November of 1978.



John W. Hamby
John W. Hamby L.S. 2843

COUNTY SURVEYOR'S CERTIFICATE

This map has been examined for conformance with the requirements of the Land Surveyor's Act this 13th day of August, 1979.

Lawrence J. Brock
Lawrence J. Brock RCE 19528
Plumas County Surveyor

RECORDER'S CERTIFICATE

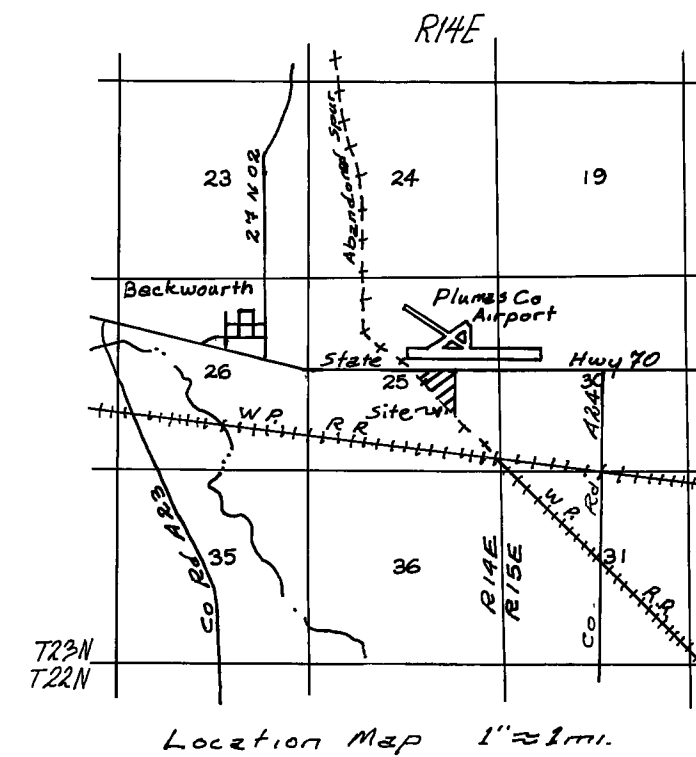
Filed this 13th day of August, 1979 at 2:16 P.M. in Book 5 of Record of Survey, at Page 58, at the request of the County Engineer
Fee \$5.00
File no. 11614

Raynelle Slatsen
County recorder
By *Frances Nicol*
Deputy

RECORD OF SURVEY

FOR
FRANK AND ETHEL NERVINO
AND
HERBERT AND JANICE BISHOP
AND
GARY AND SHIRLEY ALLEGRE
A PORTION OF THE SE 1/4 OF SEC. 25
T.23N. R.14E. M.D.B.&M.
PLUMAS COUNTY CALIFORNIA

BY
JOHN W. HAMBY, L.S. 2843
PORTOLA, CALIF.
P.O. BOX 842
(916) 832-5571



LEGEND

- found 6"x6" concrete Highway Monument
- found point per 4 R.S. 27, set 1/2" rebar w/ aluminum cap L.S. 2843
- found point per 5 P.M. 99, set 1/2" rebar w/ aluminum cap L.S. 2843, unless otherwise noted
- ⊙ computed point
- ⊙ set 1/2" rebar w/ aluminum cap L.S. 2843
- (R) record - as noted
- (M) measured
- ▲ found point per 3 P.M. 118, set 1/2" rebar w/ aluminum cap L.S. 2843

NOTES

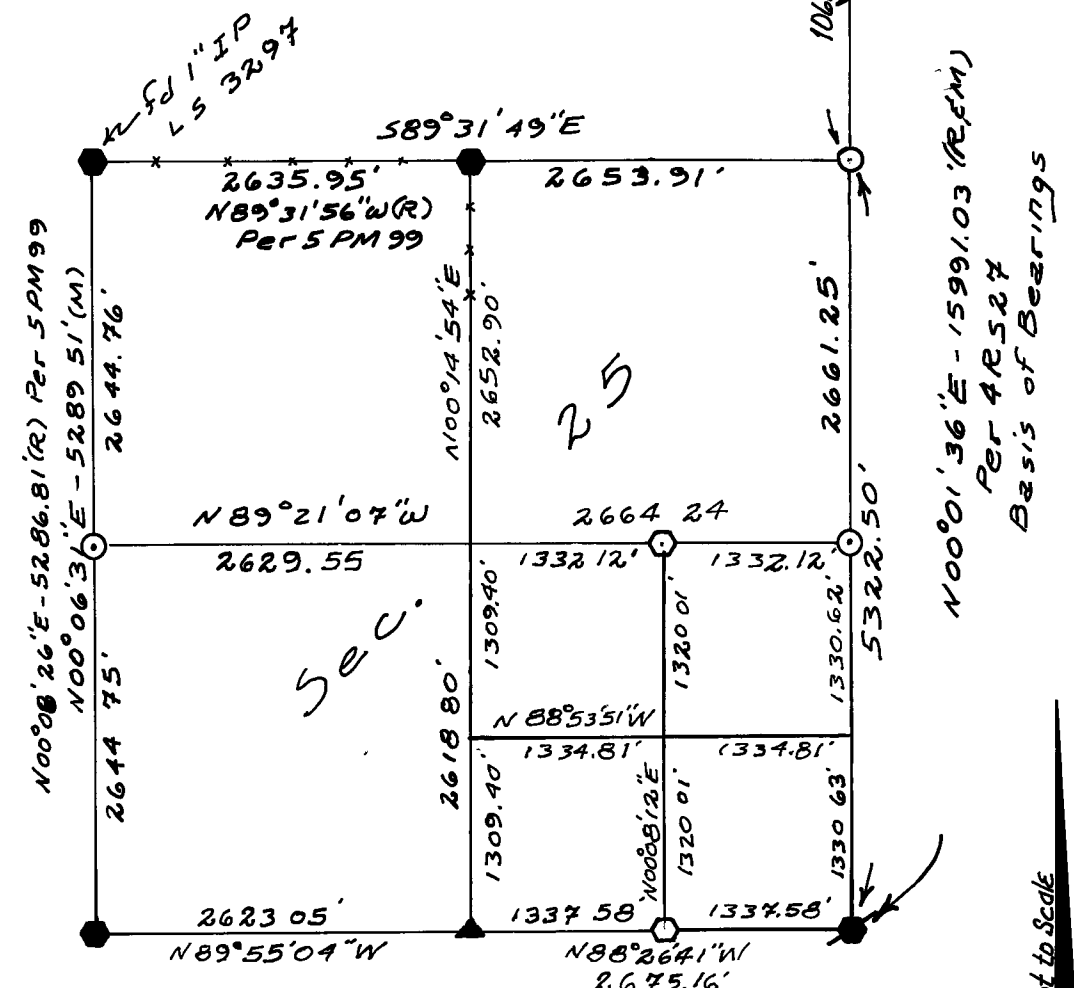
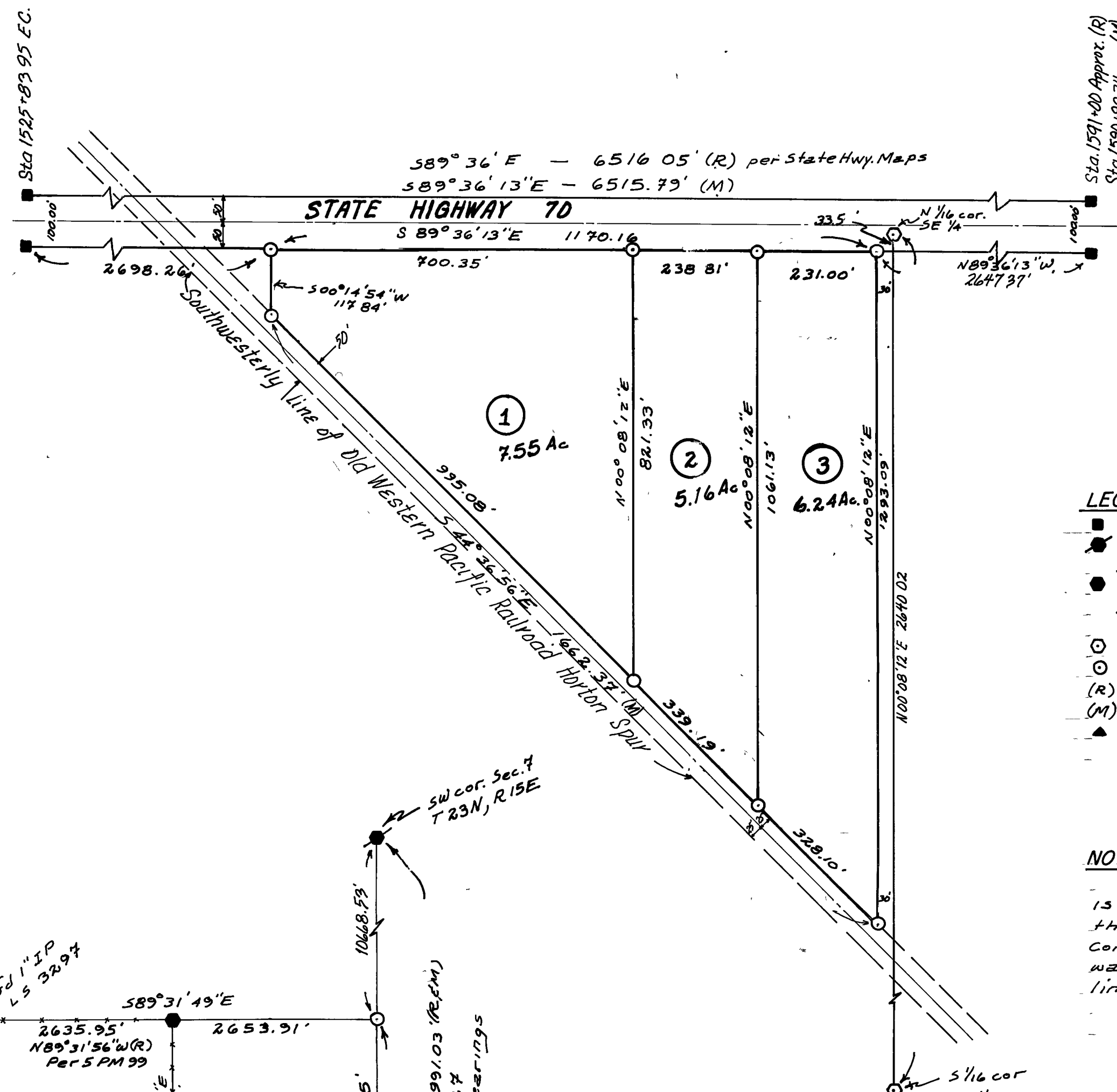
The south line of parcels one, two, & three is the northeasterly right-of-way line of the abandoned 50 foot Western Pacific RR Company's Horton Spur. This line's location was determined by projecting the center line of the existing Loyaltan Spur Line Tracks

Basis of Bearings:

The line between the SW Corner of Section 7, T.23N, R.14E & the SE Corner of Section 25, T.23N, R.14E is N00°01'36"E per 4 R.S. 27

Scale 1"=200'

Not to Scale



Section Breakdown