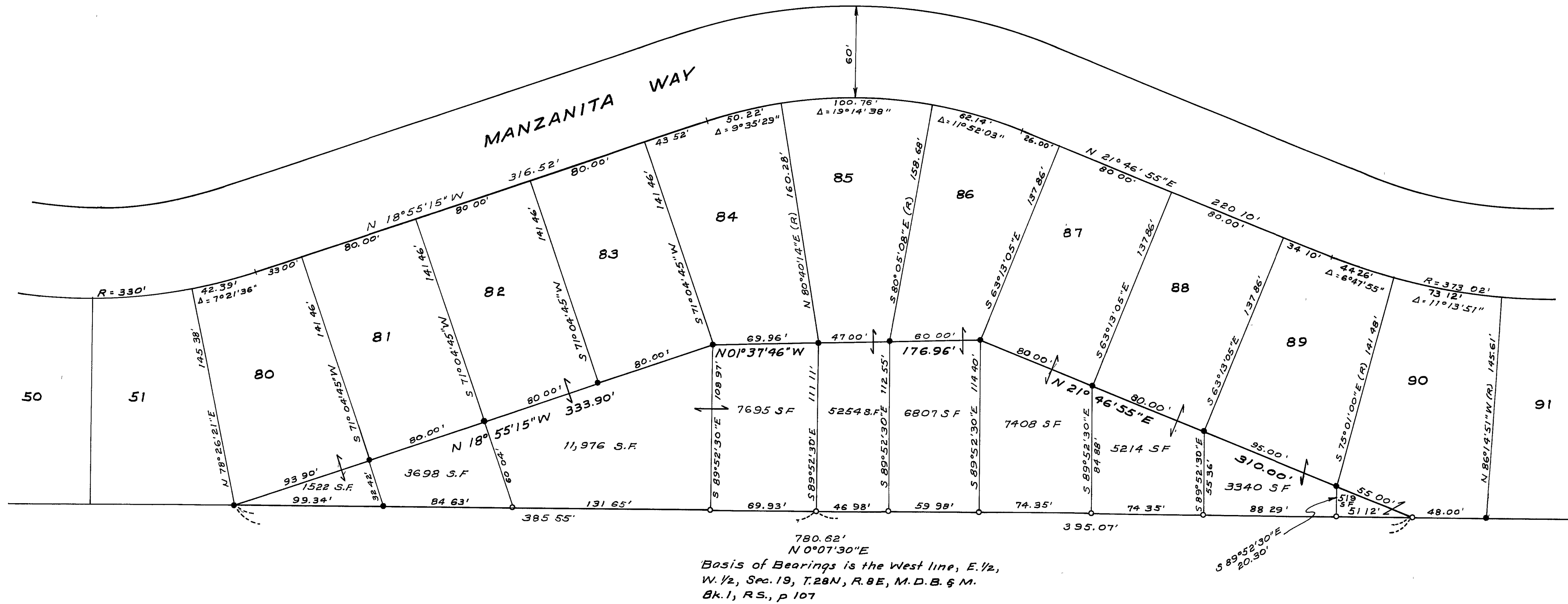
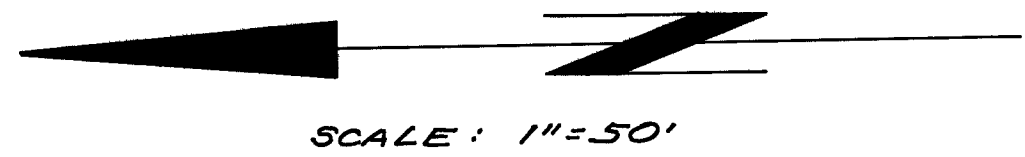


LAKE ALMANOR PINES SUBDIVISION
UNIT No. 2
Bk 3, Maps, p 25-27



LEGEND

- Found 3/4" IP tagged R.C.E. 7294
- Set 3/4" IP tagged L.S. 3202



SURVEYOR'S CERTIFICATE:
This map correctly represents a survey made under my direction in conformance with the requirements of the Land Surveyor's Act at the request of George J. Quigley in Feb 1979.

Paul E. Simpson
Paul E. Simpson, Licensed Land Surveyor No. 3202
STATE OF CALIFORNIA

COUNTY SURVEYOR'S CERTIFICATE
This map has been examined for conformance with the requirements of the Land Surveyor's Act this 31st day of July, 1979.

Lawrence J. Brock
Lawrence J. Brock, R.C.E. 13528
Plumas County Surveyor

COUNTY RECORDER'S CERTIFICATE
Filed this 27th day of August, 1979, at 4:28 P.M., in Book 5 of Record of Surveys at page 56, at the request of the County Engineer Fee \$5.00 File No. 1198
Raynelle Slaten, Plumas County Recorder

by: *Isabelle Anderson*
Deputy

RECORD OF SURVEY FOR
GEORGE J. QUIGLEY, et. al.
A PORTION OF E. 1/2, W. 1/2, SEC 19, T. 28 N., R. 8 E., M. D. B. & M.
PLUMAS COUNTY, CALIFORNIA
SCALE: 1" = 50'
PAUL E SIMPSON, & ASSOC., PLANNING-ENGINEERING-SURVEYING
SUSANVILLE, CALIFORNIA
Sheet 1 of 1