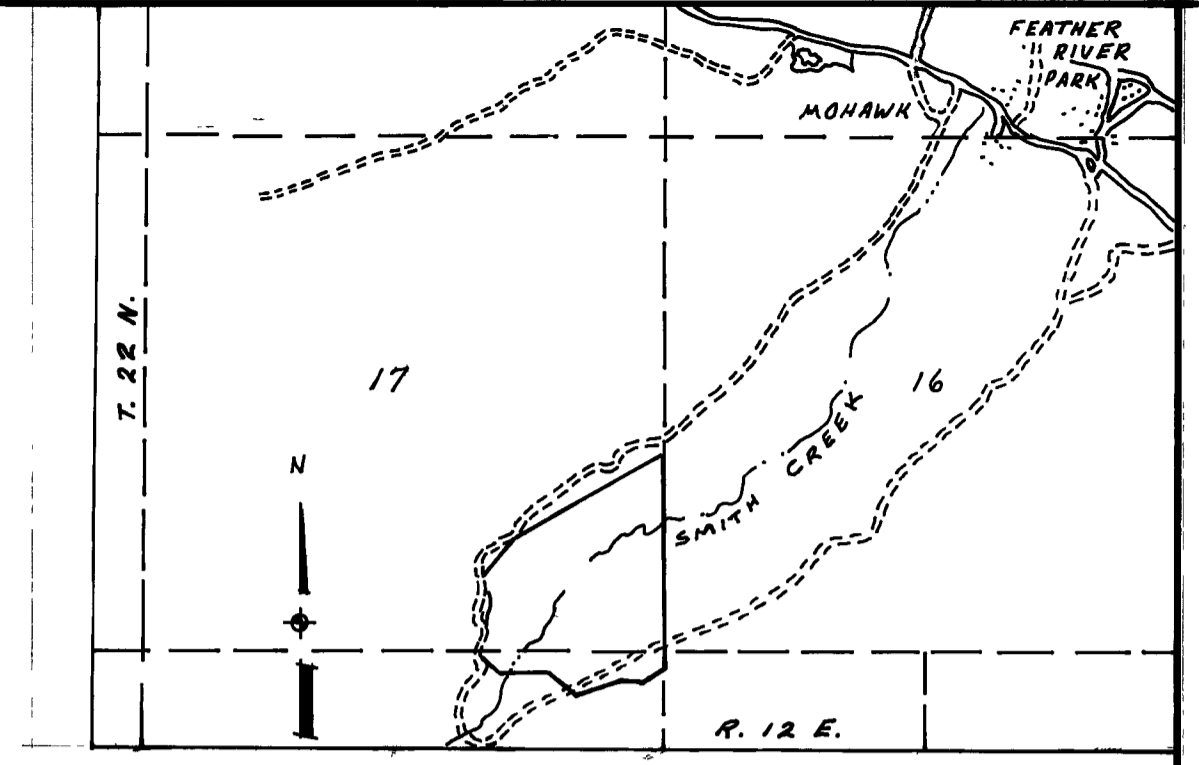


NOTE 1
 FOUND 1 1/2" I.P. 104 SOUTH AND 0.92' WEST OF THEORETICAL CORNER LOCATION. IT MARKS THE INTERSECTION OF TWO LONG-ESTABLISHED FENCE LINES WHICH RUN TO THE SOUTH AND TO THE EAST.

NOTE 2
 FOUND 3/4" I.P. 1015' NORTH AND 8.60' WEST OF THEORETICAL CORNER LOCATION



LOCATION MAP
 SCALE 1"=1885'

SURVEYOR'S CERTIFICATE

THIS MAP CORRECTLY REPRESENTS A SURVEY MADE BY ME OR UNDER MY DIRECTION IN CONFORMANCE WITH THE REQUIREMENTS OF THE LAND SURVEYOR'S ACT AT THE REQUEST OF LUNDY INVESTMENTS, INC. IN SEPTEMBER, 1978. THIS RECORD OF SURVEY DOES NOT CONSTITUTE A SUBDIVISION UNDER DIVISION 2 OF TITLE 7 OF THE GOVERNMENT CODE.

SIGNED: *Richard A. Lundy*
 RICHARD A. LUNDY
 R. C. E. 15265

COUNTY SURVEYOR'S CERTIFICATE

THIS MAP HAS BEEN EXAMINED FOR CONFORMANCE WITH THE REQUIREMENTS OF THE LAND SURVEYOR'S ACT THIS 4th DAY OF May, 1979.

SIGNED: *Laurence J. Lusk*
 PLUMAS COUNTY SURVEYOR

RECORDER'S CERTIFICATE

FILED THIS 4th DAY OF May, 1979, AT 12:00 PM, IN BOOK 5 OF RECORD OF SURVEYS AT PAGE 47, AT THE REQUEST OF THE COUNTY ENGINEER.

FEE: \$ 5.00
 FILE NO. 8451

RAYNELLE SLATEN
 COUNTY RECORDER

BY: *Tracy Nicol*
 DEPUTY

MAP NOTES

- ◊ FOUND MONUMENT AS DESCRIBED HEREON
- ◇ COMPUTED CORNER.
- ⊙ SET 1/2" REBAR WITH PLASTIC CAP STAMPED R.C.E. 15265
- 123 OR 456 - DEED REFERENCE - BOOK AND PAGE OF OFFICAL RECORDS
- I R/S 23 RECORD OF SURVEY BOOK AND PAGE.
- () RECORD DATA, WHERE DIFFERENT FROM MEASURED

BASIS OF BEARING IS THE WEST LINE OF SECTION 16, GIVEN AS N 00° 01' 22" E IN BOOK 5 OF R/S AT PAGE 28, PLUMAS COUNTY RECORDS.

SCALE - 1" = 400'



RECORD OF SURVEY

FOR
LUNDY INVESTMENTS, INC.
 SECTION 16, T. 22 N., R. 12 E., M.D.&M.
 IN PLUMAS COUNTY, CALIFORNIA

LUNDY ENGINEERING
 P. O. BOX 308
 GRAEAGLE, CALIFORNIA
 SEPTEMBER, 1978