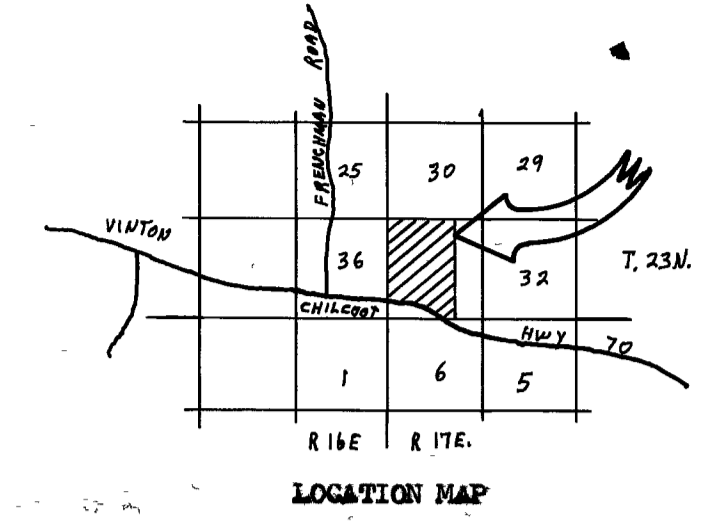


NOTE

BASIS OF BEARING IS TAKEN FROM THAT CERTAIN MAP FILED IN BOOK 5 OF PARCEL MAPS AT PAGE 66, PLUMAS COUNTY RECORDS.

LEGEND

FOUND CORNER AS SHOWN
SET 1/2" REBAR CAPPED LS 3297 EXCEPT AS NOTED



OTHER LANDS OF PFEIFFER
80 AC ±

SURVEYOR'S CERTIFICATE

THIS MAP CORRECTLY REPRESENTS A SURVEY MADE BY ME OR UNDER MY DIRECTION IN CONFORMANCE WITH THE REQUIREMENTS OF THE LAND SURVEYOR'S ACT AT THE REQUEST OF FRANK PFEIFFER IN NOVEMBER 1978.

Gerald C Henderson
GERALD G. HENDERSON LS 3297

COUNTY SURVEYOR'S CERTIFICATE

THIS MAP HAS BEEN EXAMINED FOR CONFORMANCE WITH THE REQUIREMENTS OF THE LAND SURVEYOR'S ACT THIS 19TH DAY OF JANUARY, 1979.

(by) Clifford R Brown RLS 22836
PLUMAS COUNTY SURVEYOR

RECORDER'S CERTIFICATE

FILED THIS 19TH DAY OF January, 1979, AT 1:25 P.M. IN BOOK 5 OF RECORD OF SURVEYS AT PAGE 41, AT THE REQUEST OF THE COUNTY ENGINEER.

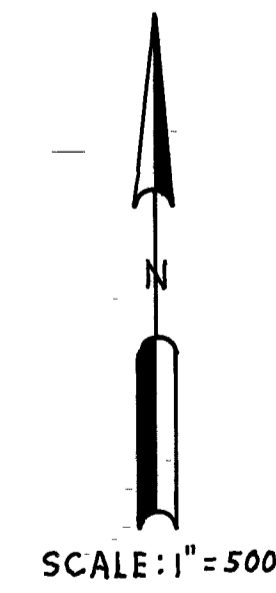
FEE \$ 5.00
FILE NO. 6069

RAYNELLE SLATON
COUNTY RECORDER

BY Isabelle Andrews
DEPUTY

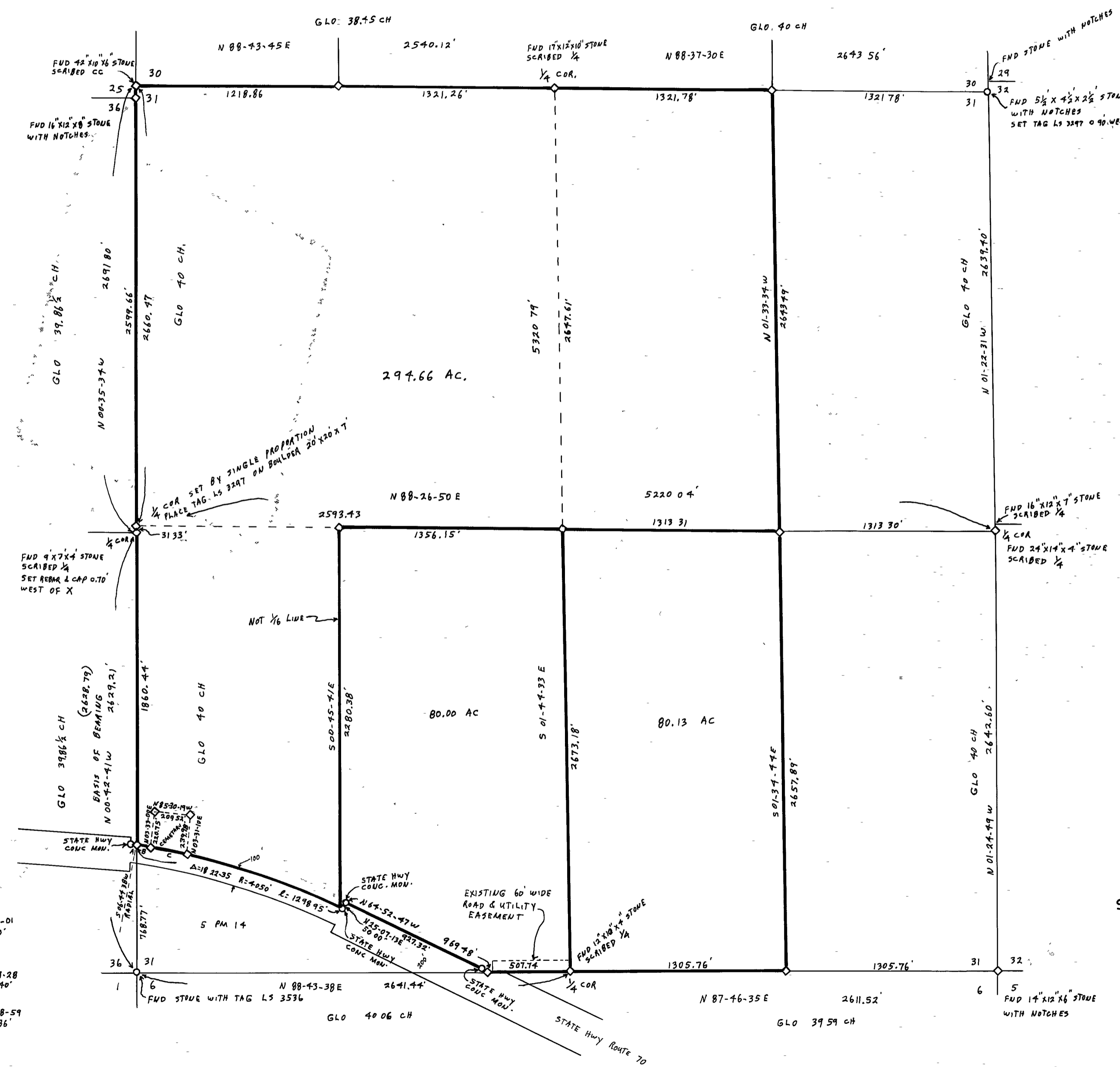
RECORD OF SURVEY

FOR
FRANK PFEIFFER ETAL NOVEMBER 1978
PORTION OF SECTION 31, T. 23N., R. 17E., MDB
PLUMAS COUNTY, CALIFORNIA



GERALD G. HENDERSON
CIVIL ENGINEER-LAND SURVEYOR
P. O. BOX 1377
PORTOLA, CALIFORNIA

SHEET 1 OF 1



A: Δ = 0-15-01
R = 4050'
L = 1770'
B: Δ = 1-29-28
L = 105.40'
C: Δ = 2-58-59
L = 210.86'