

COUNTY SURVEYOR'S CERTIFICATE

THIS MAP HAS BEEN EXAMINED FOR CONFORMANCE WITH THE REQUIREMENTS OF THE LAND SURVEYOR'S ACT THIS 30th DAY OF November, 1978.

SIGNED: Clifford R. Brown (by) CLIFF BROWN, RCE 22836 PLUMAS COUNTY SURVEYOR

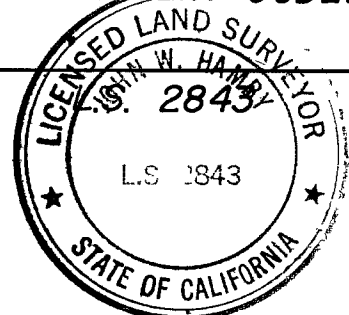
BASIS OF BEARING

THE BASIS OF BEARING IS THE CALIFORNIA COORDINATE SYSTEM ZONE 1, TAKEN FROM CAL-TRANS MONUMENTS. THEIR COORDINATES WERE ESTABLISHED FROM U.S.G. & G.S. STAS. "SMITH", "BECK" AND "HAWLEY".

SURVEYOR'S CERTIFICATE

THIS MAP CORRECTLY REPRESENTS A SURVEY MADE BY ME OR UNDER MY DIRECTION IN CONFORMANCE WITH THE REQUIREMENTS OF THE LAND SURVEYOR'S ACT AT THE REQUEST OF George Standley IN MAY, 1978. THIS RECORD OF SURVEY DOES NOT CONSTITUTE A SUBDIVISION UNDER DIVISION 2 OF TITLE 7 OF THE GOVERNMENT CODE.

SIGNED: John W. Hamby JOHN W. HAMBY



RECORDER'S CERTIFICATE

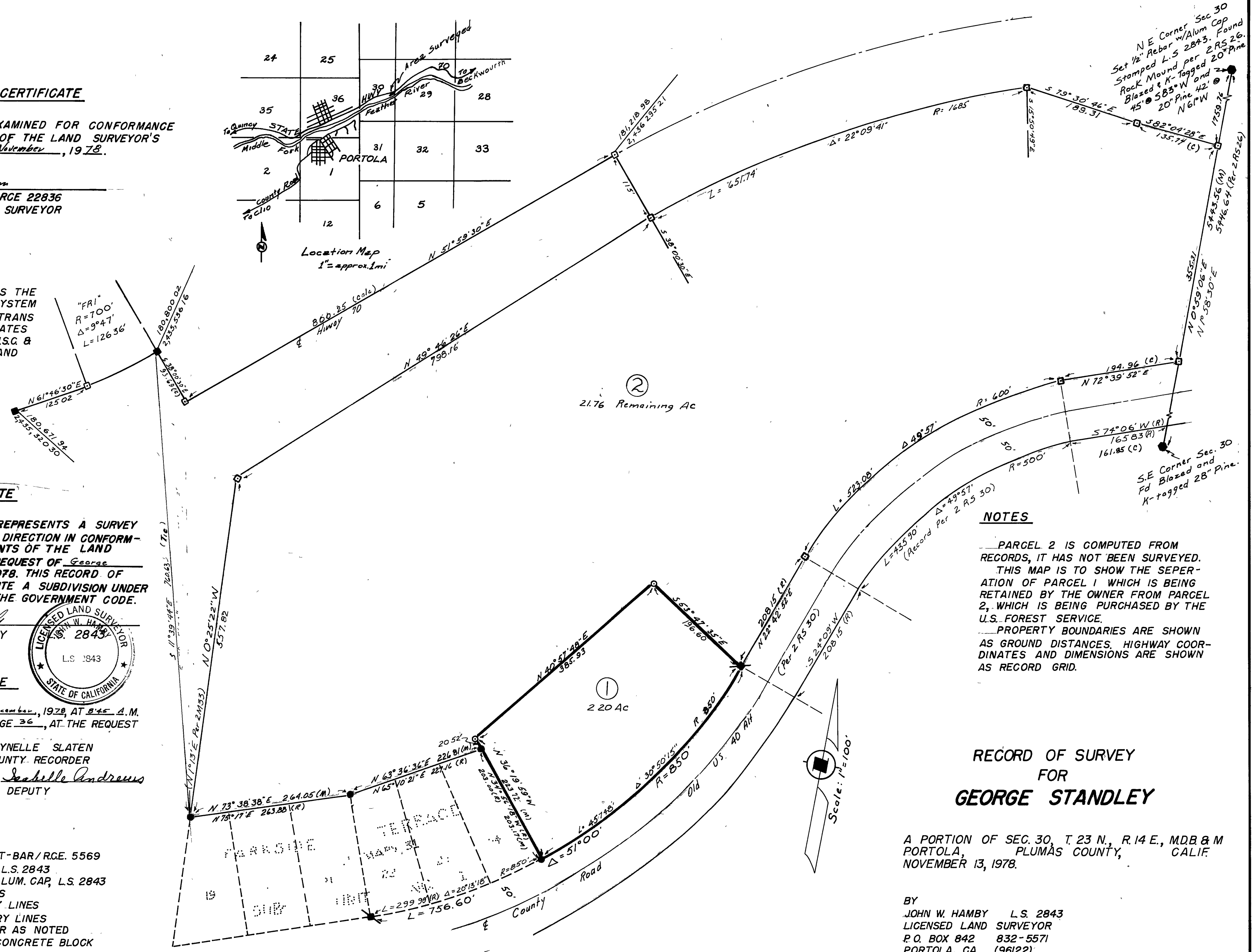
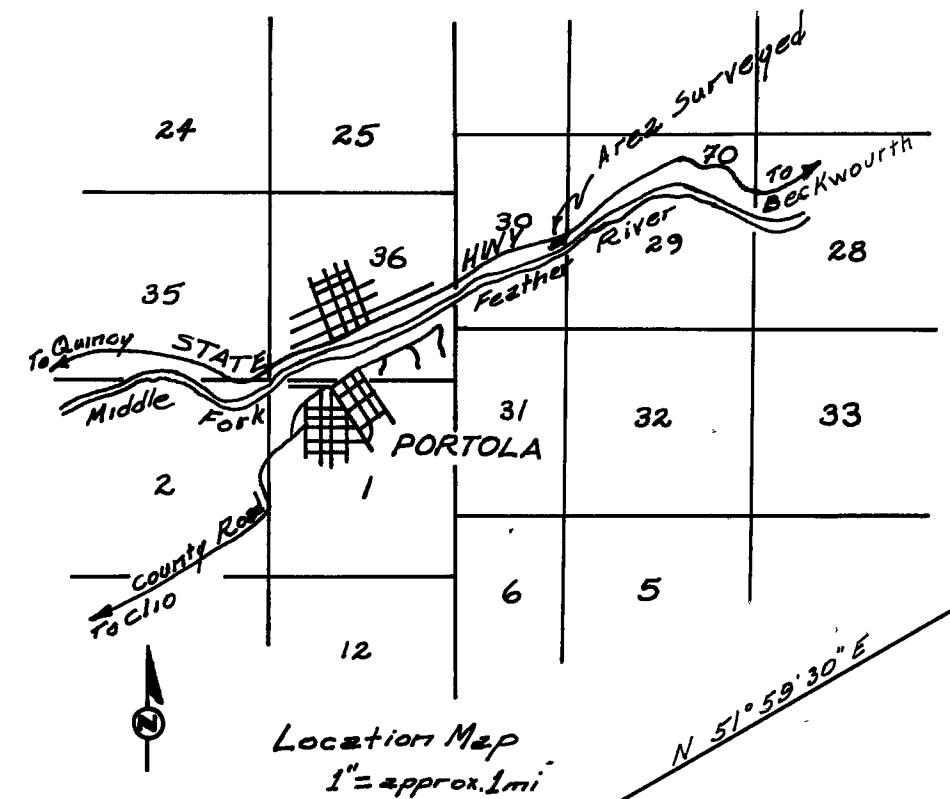
FILED THIS 1st DAY OF December, 1978, AT 8:45 A.M. IN BOOK 5 OF 1st Series AT PAGE 36, AT THE REQUEST OF THE COUNTY ENGINEER.

FEE \$5.00 FILE NO. 4936

RAYNELLE SLATEN COUNTY RECORDER BY Isabelle Andrews DEPUTY

LEGEND

- FD. HIGHWAY MON., T-BAR/RCE. 5569
FD. BOLT, SET TAG L.S. 2843
SET 1/2" REBAR W/ALUM. CAP, L.S. 2843
COMPUTED CORNERS
EXISTING BOUNDARY LINES
PROPOSED BOUNDARY LINES
FD. SECTION CORNER AS NOTED
FD. NAIL IN 4 X 4 CONCRETE BLOCK



NOTES

PARCEL 2 IS COMPUTED FROM RECORDS, IT HAS NOT BEEN SURVEYED. THIS MAP IS TO SHOW THE SEPERATION OF PARCEL 1 WHICH IS BEING RETAINED BY THE OWNER FROM PARCEL 2, WHICH IS BEING PURCHASED BY THE U.S. FOREST SERVICE. PROPERTY BOUNDARIES ARE SHOWN AS GROUND DISTANCES, HIGHWAY COORDINATES AND DIMENSIONS ARE SHOWN AS RECORD GRID.

RECORD OF SURVEY FOR GEORGE STANDLEY

A PORTION OF SEC. 30, T. 23 N., R. 14 E., MDB & M PORTOLA, PLUMAS COUNTY, CALIF. NOVEMBER 13, 1978.

BY JOHN W. HAMBY L.S. 2843 LICENSED LAND SURVEYOR P.O. BOX 842 832-5571 PORTOLA, CA. (96122)

SHEET 1 OF 1