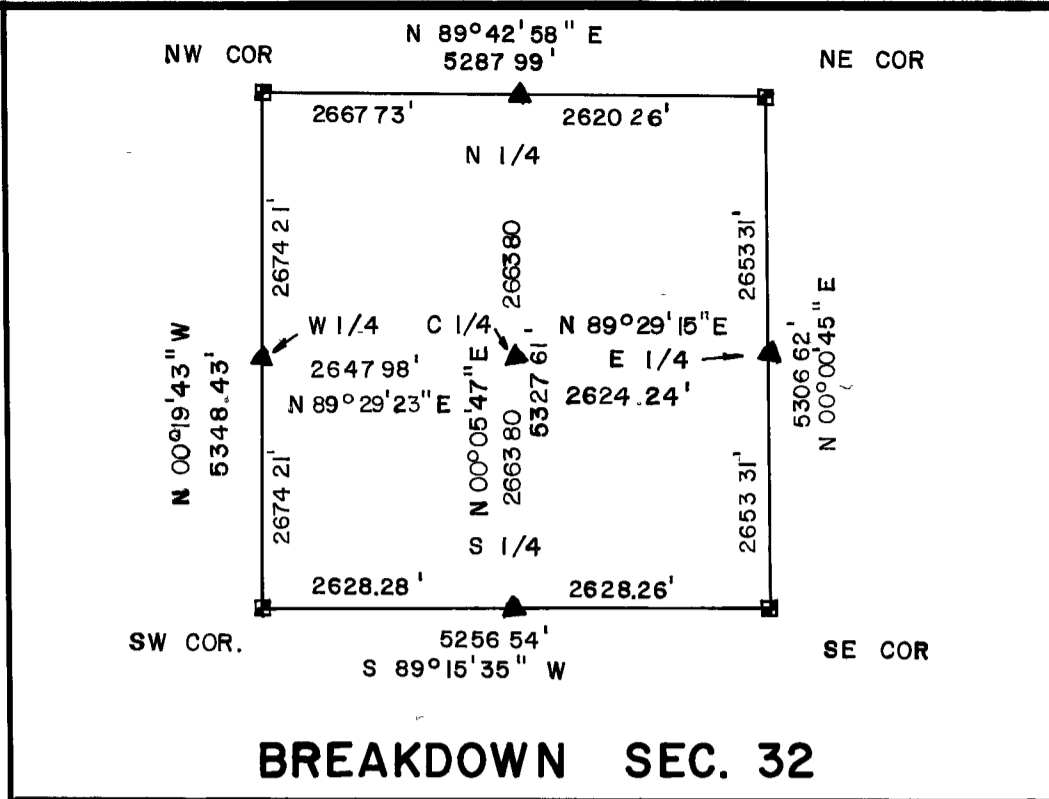
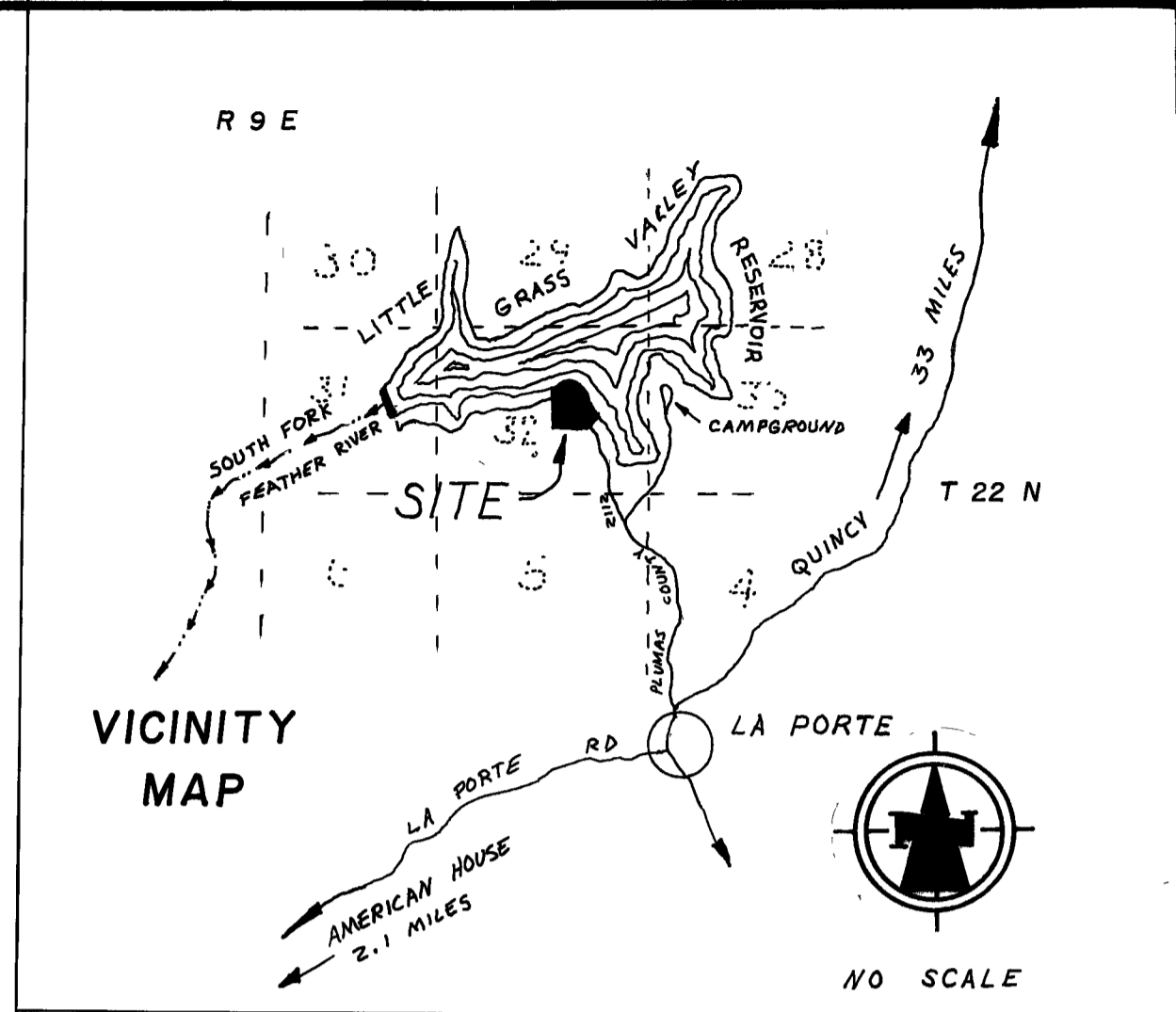


NOTE: SECTION DATA FROM UNRECORDED BECHTOL ENGINEERING RESERVOIR SURVEY.



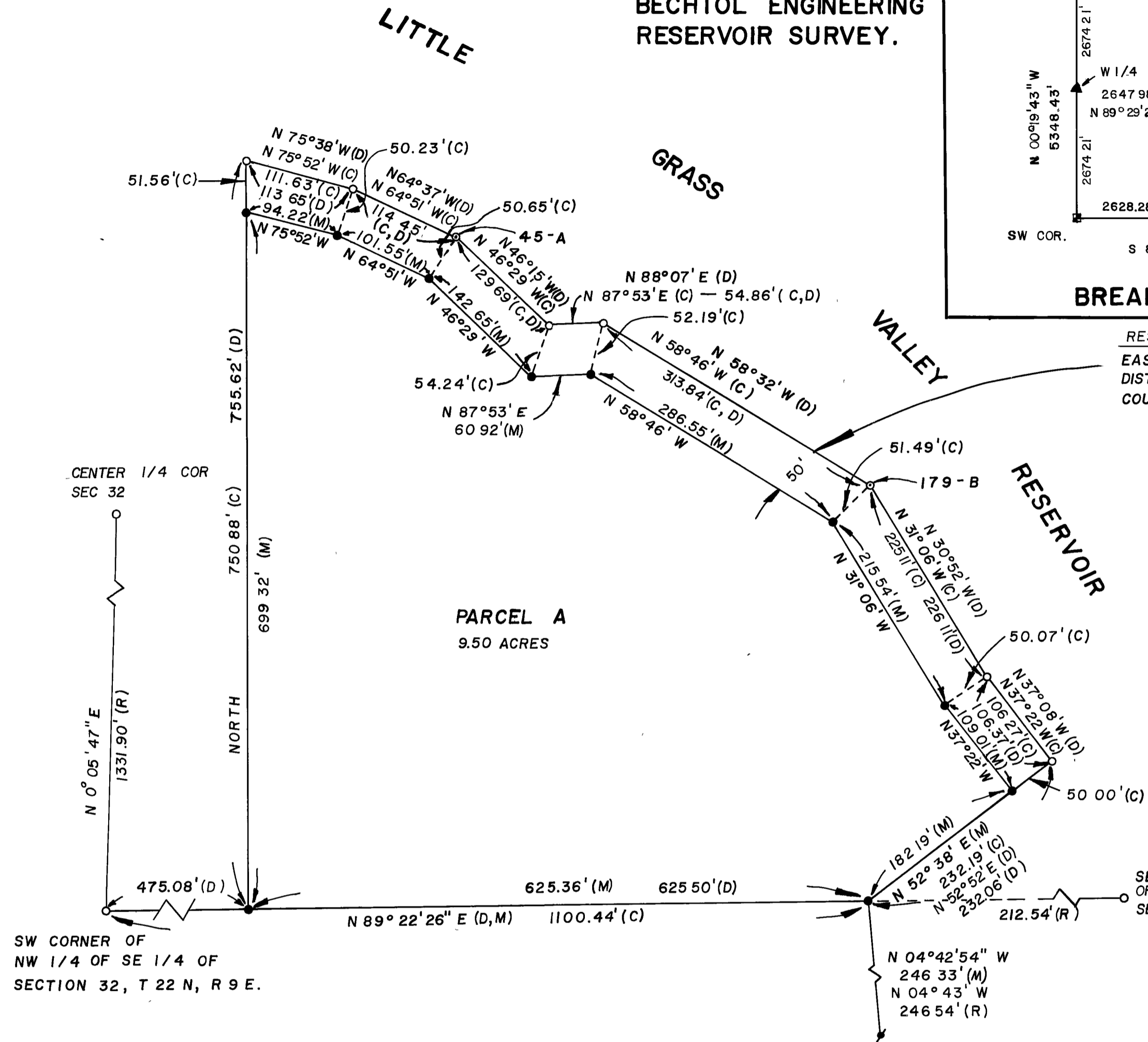
BREAKDOWN SEC. 32

RESERVOIR TAKE-LINE - 50 FEET
EASEMENT DECEDED TO OROVILLE WYANDOTTE IRRIGATION DISTRICT ON APRIL 3, 1970 VOL. 193, PG. 453 PLUMAS COUNTY O.R.

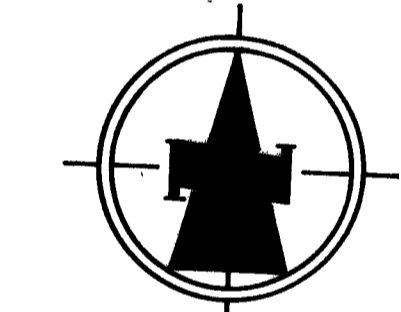


LEGEND

- SET 1/2" REBAR LS 4085
- FD RESERVOIR SURVEY MONUMENTS, HUB & TACK
- POINT DETERMINED ONLY
- ✱ FD 1/2" I.P. LS 2900
- (D) DEED AS PER VOL 164 PG 219 O R
- (M) MEASURED DATA
- (C) CALCULATED DATA
- (R) RECORD DATA AS PER UNRECORDED PLAT BY K.E SOULE - L.S. 2513



SW CORNER OF NW 1/4 OF SE 1/4 OF SECTION 32, T 22 N, R 9 E.



SCALE 1" = 100'

BASIS OF BEARINGS
THE BASIS OF BEARINGS FOR THIS MAP IS FROM SOLAR OBSERVATION TAKEN AS TRUE

NOTE: TAKE LINES ROTATED 00°14' C.C. FROM RECORD BEARINGS DUE TO FOUND MONUMENTS.

RECORD OF SURVEY

OF A PORTION OF THE NW 1/4 OF THE SE 1/4 OF SECTION 32, T 22 N, R 9 E, M.D.B. & M., IN PLUMAS COUNTY, CALIFORNIA

FOR AL MCKINNON

SHEET 1 OF 1

SURVEYORS CERTIFICATE

THIS MAP CORRECTLY REPRESENTS A SURVEY MADE BY ME OR UNDER MY DIRECTION IN CONFORMANCE WITH THE REQUIREMENTS OF THE LAND SURVEYORS ACT AT THE REQUEST OF AL MCKINNON IN JANUARY 1978.

Ronald L. Graves
RONALD L. GRAVES, No. 4085

COUNTY SURVEYORS CERTIFICATE

THIS MAP HAS BEEN EXAMINED FOR CONFORMANCE WITH THE REQUIREMENTS OF THE LAND SURVEYORS ACT THIS 28TH DAY OF August, 1978

(by) Clifford R. Brown R.C.E. 22836
COUNTY SURVEYOR

RECORDER'S CERTIFICATE

FILED THIS 28TH DAY OF August 1978, AT 9:10 A.M. IN BOOK 5 OF MAPS AT PAGE 27, AT THE REQUEST OF THE COUNTY ENGINEER

FEE \$5.00
FILE 1720

RAYNELLE SLATEN
COUNTY RECORDER
BY DEPUTY

Ron Graves & associates
SURVEYING
PARCEL MAPS
PUBLIC REPORTS

P. O. Box 1576 Oroville, Ca. 95965
Ph. (916) 534-1911 77-564