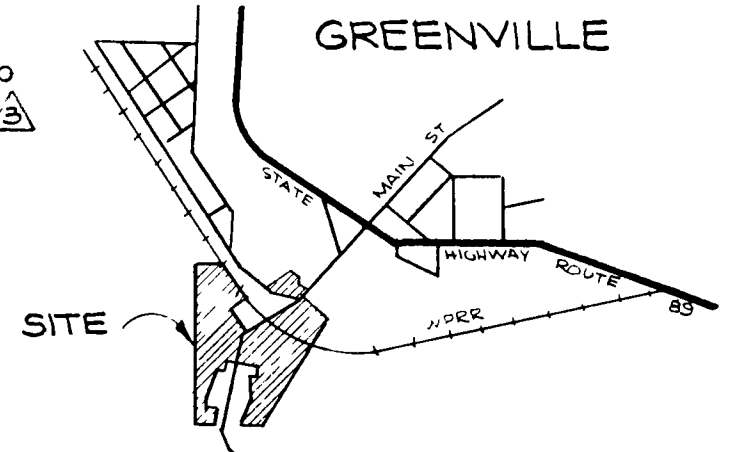


3/4" I.P. IN ROCK MOUND (N 293499.048)  
LS 2322, S 1/4 COR. SEC. 3 (E 2291744.452)

SCALE: 1"=100'

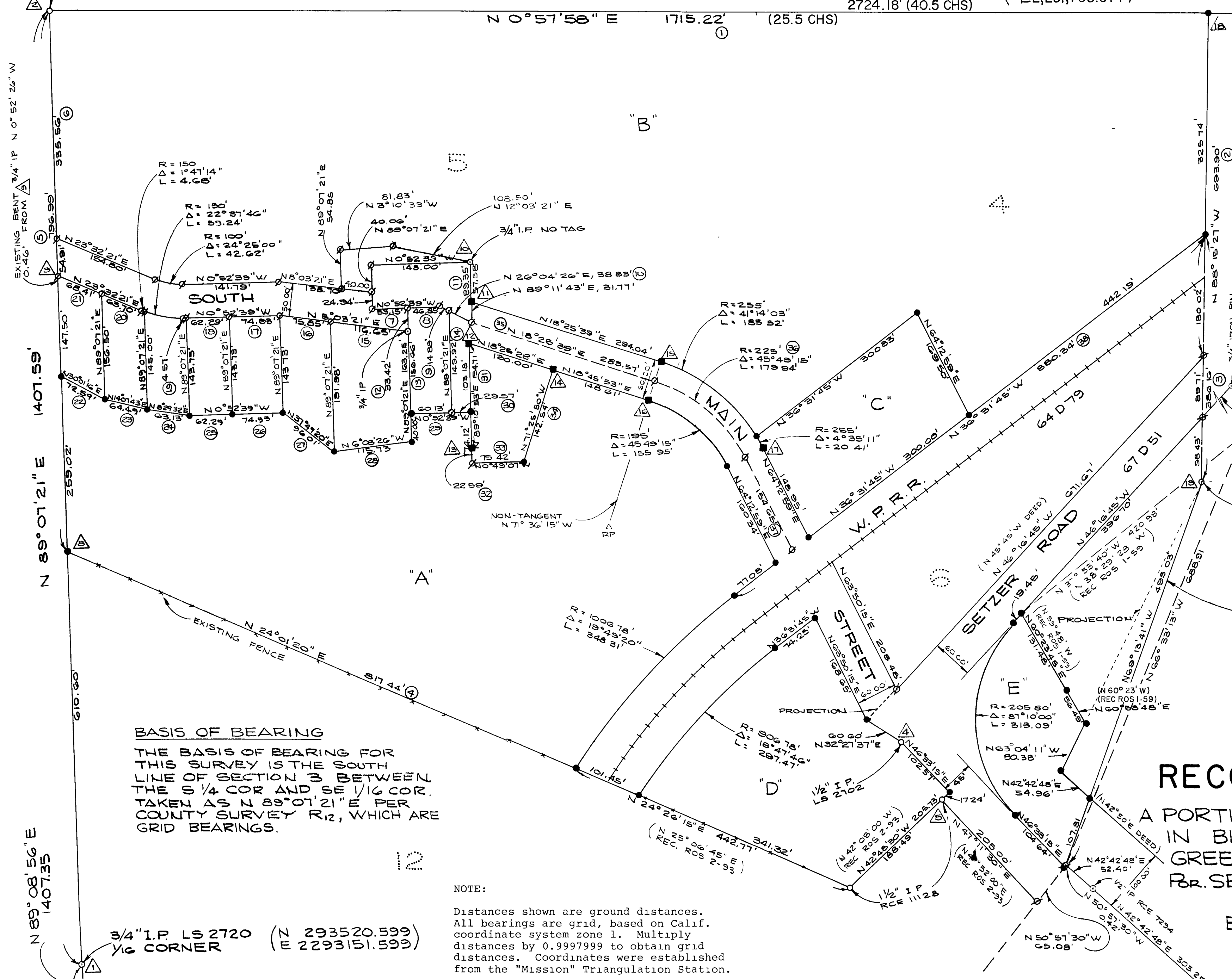
GEN. OF SEC. PER R<sub>5</sub>  
1 1/4" I.P. BURIED  
(N 296,222.294)  
(E 2,291,790.377)



LOCATION MAP  
NO SCALE

LEGEND

- FOUND MON., AS DESCRIBED.
- FOUND 1/2" REBAR, TAGGED RCE 11173.
- ⊗ CALCULATED POINT, NOTHING SET.
- SET 5/8" RE-BAR W/PLASTIC CAP, MARKED RCE 13151.
- ⊙ RECORD DATA CROSS REFERENCE, SEE SHEET 1.
- ⊠ IDENTIFICATION POINT NUMBER REFERRED TO IN THE RESOLUTION OF THE SURVEY ON SHEET 1.



**BASIS OF BEARING**  
THE BASIS OF BEARING FOR THIS SURVEY IS THE SOUTH LINE OF SECTION 3 BETWEEN THE S 1/4 COR AND SE 1/16 COR. TAKEN AS N 89°01'21" E PER COUNTY SURVEY R<sub>12</sub>, WHICH ARE GRID BEARINGS.

**NOTE:**  
Distances shown are ground distances. All bearings are grid, based on Calif. coordinate system zone 1. Multiply distances by 0.9997999 to obtain grid distances. Coordinates were established from the "Mission" Triangulation Station.

RECORD OF SURVEY

A PORTION OF LOTS 4, 5 AND 6 IN BLOCK 7 OF THE TOWN OF GREENVILLE, PLUMAS COUNTY, CALIF. FOR SE 1/4 SEC. 3 T26N R9E M.D.B. & M.

FOR  
BRUCE S. BIDWELL

ROLLS, ANDERSON & ROLLS  
CIVIL ENGINEERS  
CHICO, CALIFORNIA 95926

JUNE, 1978

SHEET 2 OF 2