

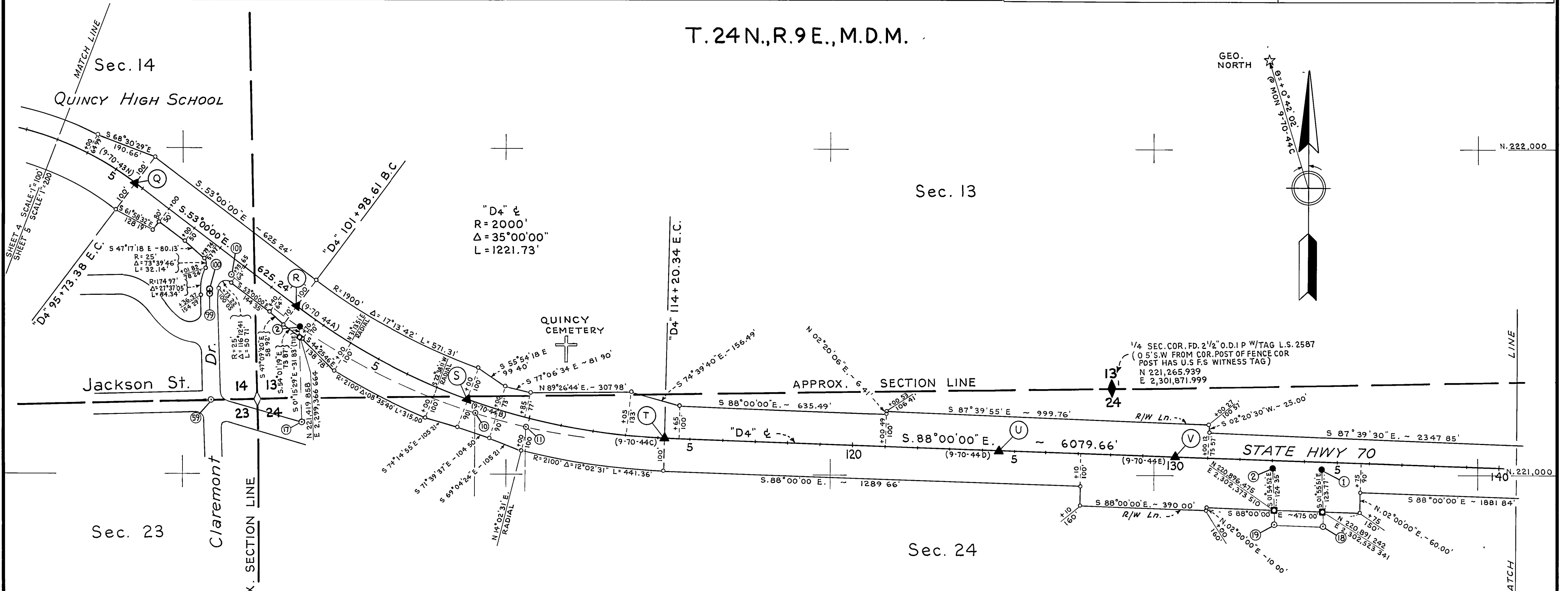
## - FOUND POINTS -

SEC	PT	COORDINATES		DESCRIPTION	RECORDED AT			SEC	PT	COORDINATES		DESCRIPTION	RECORDED AT		
		NORTH	EAST		BK	OF	PG			NORTH	EAST		BK	OF	PG
14	99	221,544.923	2,299,084.122	SPIKE & SHINER				24	2	221,020.743	2,302,369.058	1" O.D.I.P. W/TAG L.S. 2587	1	R.S.	33
14	100	221,555.126	2,299,083.892	SPIKE & SHINER IN PAVEMENT	2	PM	85	24	1	221,014.938	2,302,519.171	1" O.D.I.P.	1	R.S.	33
14	101	221,609.503	2,299,156.314	1 3/8" O.D.I.P. W/TAG JOHN C. SIMPSON R.C.E. 11173	1	PM	13	24	18	220,840.223	2,302,525.061	3/4" I.P. L.S. 2587			
14	59	221,225.125	2,299,091.065	SPIKE & SHINER W/PUNCH MARK	2	PM	85	24	19	220,846.422	2,302,375.183	3/4" I.P. L.S. 2587			
13	2	221,451.677	2,299,365.965	1 3/8" O.D.I.P. W/TAG JOHN C. SIMPSON R.C.E. 11173	1	PM	13								
24	17	221,155.671	2,299,372.465	1" I.P. - R.C.E. 11173											
24	10	221,191.095	2,299,905.668	1" DIA. STEEL PIN IN M.O.R.											
24	11	221,148.453	2,300,063.339	1" O.D.I.P. W/TAG L.S. 2587											

## - LEGEND -

- ▲ SURVEY MONUMENT, SET STANDARD BRASS DISK IN CONCRETE, STAMPED AS NOTED.
- PROPERTY MONUMENT FOUND AND REMOVED.
- ◆ SECTION OR FRACTIONAL CORNER, FOUND
- ◇ SECTION OR FRACTIONAL CORNER, NOT LOCATED.
- MONUMENT, AS NOTED.
- NO MONUMENT SET.
- ⊙ PROPERTY MONUMENT, FOUND.

T. 24N., R. 9E., M.D.M.



### SURVEYOR'S CERTIFICATE

THIS MAP CORRECTLY REPRESENTS A SURVEY MADE BY ME OR UNDER MY DIRECTION IN CONFORMANCE WITH THE REQUIREMENTS OF THE LAND SURVEYOR'S ACT AT THE REQUEST OF DEPARTMENT OF TRANSPORTATION IN March, 1977.

*George E. Perry*  
 GEORGE E. PERRY R.C.E. 10148  
 CHIEF, ENGINEERING SERVICES



SUPPLEMENTARY INFORMATION MAY BE OBTAINED FROM THE DISTRICT OFFICE, SURVEY DEPARTMENT OR RIGHT OF WAY ENGINEERING DEPT., 1657 RIVERSIDE DR., REDDING, CALIFORNIA

MON NO.	COORDINATES		LOCATION
	NORTH	EAST	
Q	221,890.189	2,298,856.963	N 25°31'47"W - 0 074' FROM "D4" 95+73.38 E.C
R	221,513.902	2,299,356.257	N. 52°45'55"W. - 0 094' FROM "D4" 101+98.61 B.C
S	221,228.991	2,299,883.354	S 19°46'23"W. - 0 048' FROM "D4" 107+99.81 P.O.C
T	221,112.311	2,300,489.855	S 85°43'46"W - 0 309' FROM "D4" 114+20.34 E.C
U	221,076.322	2,301,519.104	S. 02°00'00"W - 0.081' FROM "D4" 124+49.91 P.O.T.
V	221,057.145	2,302,068.936	S 02°00'00"W - 0.057' FROM "D4" 130+00.08 P.O.T

\* BASED ON AUGUST, 1964 ADJUSTMENT.

EXCEPTING THOSE SHOWN OTHERWISE, ALL DISTANCES AND BEARINGS ARE GRID, BASED ON CALIFORNIA COORDINATE SYSTEM, ZONE I. TO OBTAIN GROUND LEVEL DISTANCES, MULTIPLY GRID DISTANCES SHOWN BY 1.000150

GRID WAS ESTABLISHED FROM U.S.C. & G.S. TRIANGULATION STATION

* "QUINCY"	N. 223,672.61	* "RADIO HILL"	N. 223,005.19
	E. 2,293,761.78		E. 2,300,677.10
N. _____		N. _____	
E. _____		E. _____	

STATE OF CALIFORNIA  
 BUSINESS AND TRANSPORTATION AGENCY  
 DEPARTMENT OF TRANSPORTATION  
 DISTRICT 02  
**RECORD OF SURVEY OF MONUMENTATION**  
 IN PLUMAS COUNTY  
 ON ROUTE 70  
 PM. 42.1 TO PM. 47.0  
 PREPARED BY BOB BREUNING, CHKD. BY RON HALL  
 DRAWN BY W.J. ZIEGLER, DATE MARCH, 1977  
 SCALE: 1" = 200' SHEET 5 OF 8