

- FOUND POINTS -

SEC	PT	COORDINATES		DESCRIPTION	RECORDED AT			SEC	PT	COORDINATES		DESCRIPTION	RECORDED AT		
		NORTH	EAST		BK	OF	PG			BK	OF		PG		
14	41	221,993.316	2,296,602.755	1 3/8" IRON PIN (HEXAGONAL)	1	"RS"	68	14	77	221,717.071	2,297,225.099	P.K. NAIL IN CONC. SIDEWALK	2	"RS"	3
14	43	221,908.875	2,296,856.620	1/2" RE-BAR W/PLASTIC CAP R.C.E. 11173	2	"PM"	106	14	78	221,749.266	2,297,288.378	P.K. NAIL IN CONC. SIDEWALK	2	"RS"	3
14	44	221,852.949	2,296,855.796	1/2" RE-BAR W/PLASTIC CAP R.C.E. 11173	2	"PM"	106	14	79	221,585.951	2,297,072.925	1" O.D.I.P. W/TAG R.E. 292			
14	45	221,778.020	2,296,854.637	1/2" RE-BAR W/PLASTIC CAP R.C.E. 11173	2	"PM"	106	14	81	221,747.252	2,297,423.143	3/4" O.D.I.P. W/SPIKE IN TOP	1	"RM"	80
14	47	221,907.874	2,296,924.527	1/2" RE-BAR W/PLASTIC CAP R.C.E. 11173	2	"PM"	106	14	83	221,648.156	2,296,802.801	SCRIBED "X" IN CONC. S.W.	3	"RS"	14-A
14	49	221,902.839	2,297,226.627	3/4" O.D.I.P. W/TAG L.S. 2702	2	"RS"	3	14	87	221,590.934	2,296,800.924	7/8" IRON PIN - 2.5' N OF COR	2	"RS"	3
14	51	222,030.528	2,297,802.053	SCRIBED "X" IN CONC. HDWL.	1	"RS"	12	14	88	221,947.279	2,297,837.025	DIV. OF HWYS R/W MON.	3	"RS"	34
14	52	221,909.548	2,297,739.224	SCRIBED "X" IN CONC. CURB. { 3" R.S. 34 SHOWS 1" I.P. (2" PM 20 SHOWS DRILL MARK	3	"RS"	34	14	91	222,305.054	2,297,900.442	1" O.D.I.P. W/TAG JOHN C SIMPSON R.C.E. 11173	1	"RM"	80
14	57	221,857.565	2,298,046.942	NAIL & SHINER (P.1)	2	"PM"	20	14	92	222,209.001	2,298,150.340	LEAD PLUG & NAIL IN CONC. SLAB	2	"PM"	20
14	67	221,654.927	2,296,400.601	1" O.D.I.P. W/NAIL	3	"RS"	14-A	14	93	221,907.525	2,298,035.197	N. & S. IN PVMNT. (E.C.)	2	"PM"	20
14	69	221,653.667	2,296,475.524	1 1/8" O.D.I.P. W/TAG R.C.E. 7294	3	"RS"	14-A	14	94	221,805.276	2,298,048.108	N & S IN PAVEMENT (E.C.)	2	"PM"	20
14	74	221,644.145	2,297,040.044	P.K. NAIL IN CONC. SIDEWALK	2	"PM"	106	14	95	221,795.524	2,297,869.038	7/8" O.D.I.P. DRIVEN INTO 2" O.D.I.P. W/TAG JOHN C SIMPSON R.C.E. 11173	2	"PM"	20
14	75	221,643.458	2,297,080.545	"X" IN CONC. CURB	2	"RS"	3								
14	76	221,683.670	2,297,159.535	P.K. NAIL IN CONC. SIDEWALK	2	"RS"	3								

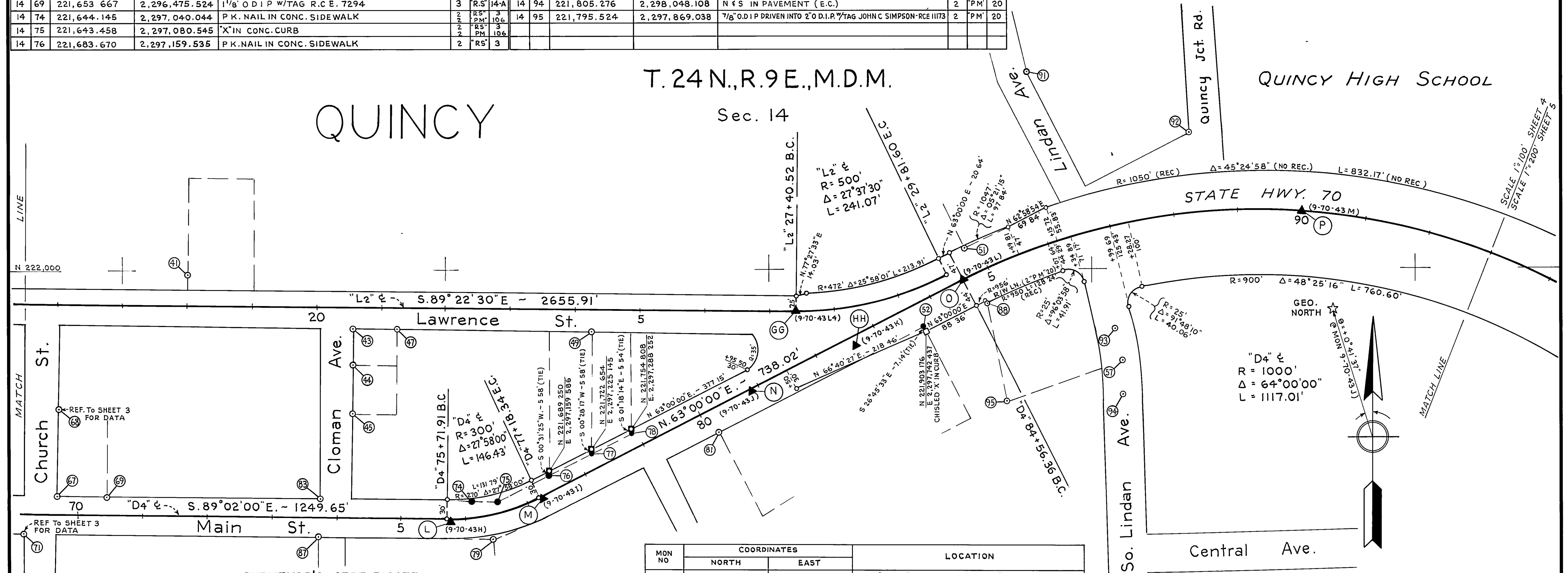
- LEGEND -

- ▲ SURVEY MONUMENT, SET STANDARD BRASS DISK IN CONCRETE, STAMPED AS NOTED.
- PROPERTY MONUMENT FOUND AND REMOVED.
- ◆ SECTION OR FRACTIONAL CORNER, FOUND
- ◊ SECTION OR FRACTIONAL CORNER, NOT LOCATED.
- MONUMENT, SET T-BAR W/TAG, "DIST. SURV ENGR."
- MONUMENT, AS NOTED.
- NO MONUMENT SET.
- ⊙ PROPERTY MONUMENT, FOUND.

T. 24N., R. 9E., M.D.M.

QUINCY

Sec. 14



SURVEYOR'S CERTIFICATE
 THIS MAP CORRECTLY REPRESENTS A SURVEY MADE BY ME OR UNDER MY DIRECTION IN CONFORMANCE WITH THE REQUIREMENTS OF THE LAND SURVEYOR'S ACT AT THE REQUEST OF DEPARTMENT OF TRANSPORTATION IN March, 1977.



GEORGE E. PERRY R.C.E. 10148
 CHIEF, ENGINEERING SERVICES

MON NO	COORDINATES		LOCATION
	NORTH	EAST	
GG	221,935.633	2,297,541.632	N 60°56'43"W - 0.103' FROM "L2" 27+40.52 B.C
L	221,614.653	2,297,006.502	S 00°10'25"W - 0.089' FROM "D4" 75+76.06 P.O.C
M	221,647.362	2,297,147.800	S 27°00'00"E - 1.972' FROM "D4" 77+22.04 P.O.T.
N	221,813.286	2,297,473.193	S. 27°00'00"E - 1.858' FROM "D4" 80+87.30 P.O.T.
HH	221,885.635	2,297,632.069	S 27°00'00"E - 9.522' FROM "D4" 82+61.70 P.O.T
P	221,982.596	2,297,801.152	N. 20°04'17"W - 0.111' FROM "D4" 84+56.36 B.C
O	222,088.909	2,298,327.458	N 04°08'41"E - 0.038' FROM "D4" 90+00.18 P.O.C

* BASED ON AUGUST, 1964 ADJUSTMENT.
 EXCEPTING THOSE SHOWN OTHERWISE, ALL DISTANCES AND BEARINGS ARE GRID, BASED ON CALIFORNIA COORDINATE SYSTEM, ZONE I. TO OBTAIN GROUND LEVEL DISTANCES, MULTIPLY GRID DISTANCES SHOWN BY 1.000150

GRID WAS ESTABLISHED FROM U.S.C. & G.S. TRIANGULATION STATION

* "QUINCY"	N. 223,672.61	* "RADIO HILL"	N. 223,005.19
	E. 2,293,761.78		E. 2,300,677.10
N		N	
E		E	

SUPPLEMENTARY INFORMATION MAY BE OBTAINED FROM THE DISTRICT OFFICE, SURVEY DEPARTMENT OR RIGHT OF WAY ENGINEERING DEPT., 1657 RIVERSIDE DR., REDDING, CALIFORNIA

STATE OF CALIFORNIA
 BUSINESS AND TRANSPORTATION AGENCY
 DEPARTMENT OF TRANSPORTATION
 DISTRICT 02
RECORD OF SURVEY OF MONUMENTATION
 IN PLUMAS COUNTY
 ON ROUTE 70
 PM. 42.1 TO PM. 47.0
 PREPARED BY BOB BREUNING_CHKD. BY RON HALL
 DRAWN BY W.J. ZIEGLER DATE MARCH, 1977
 SCALE: 1" = 100' SHEET 4 OF 8