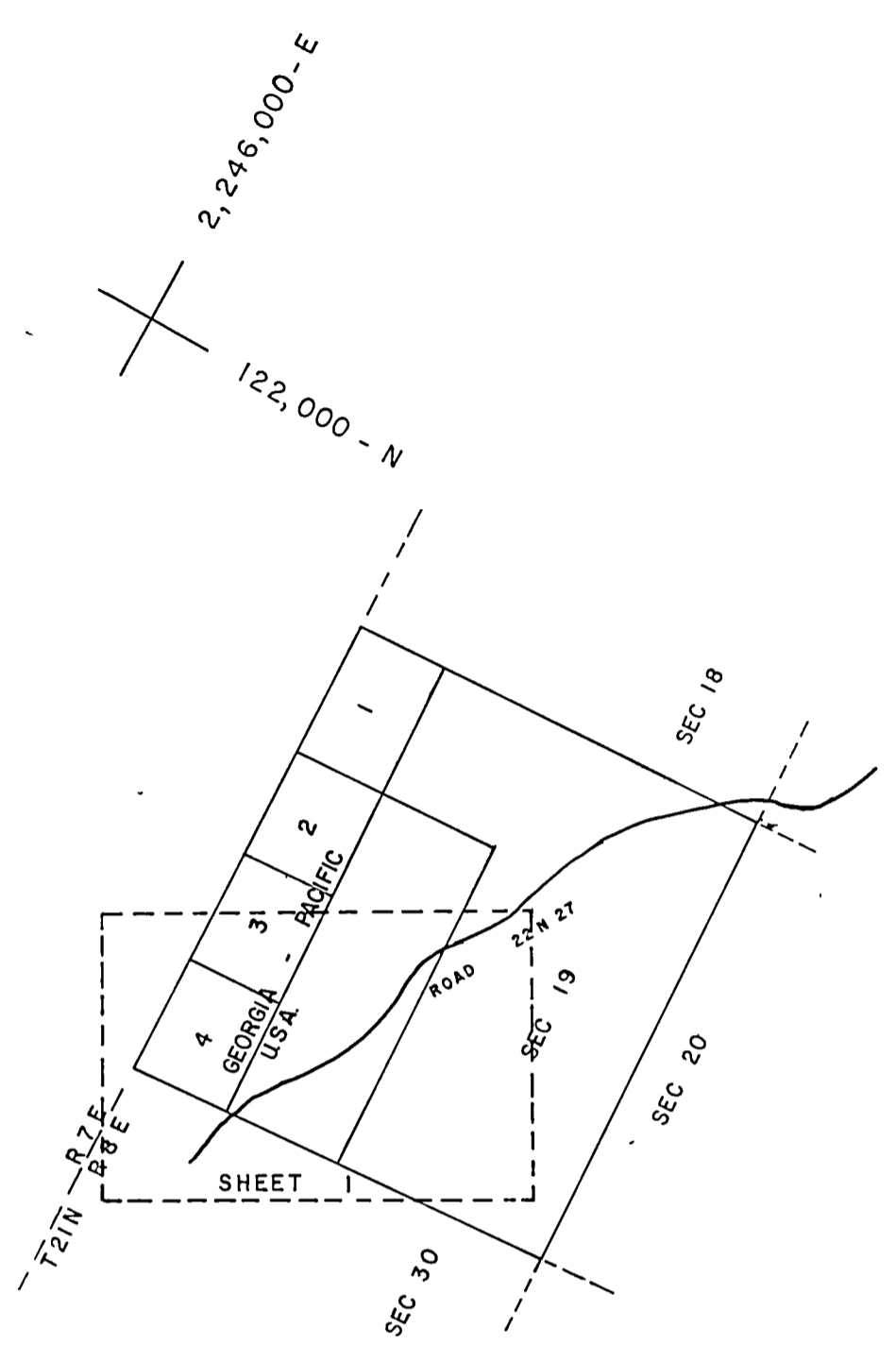
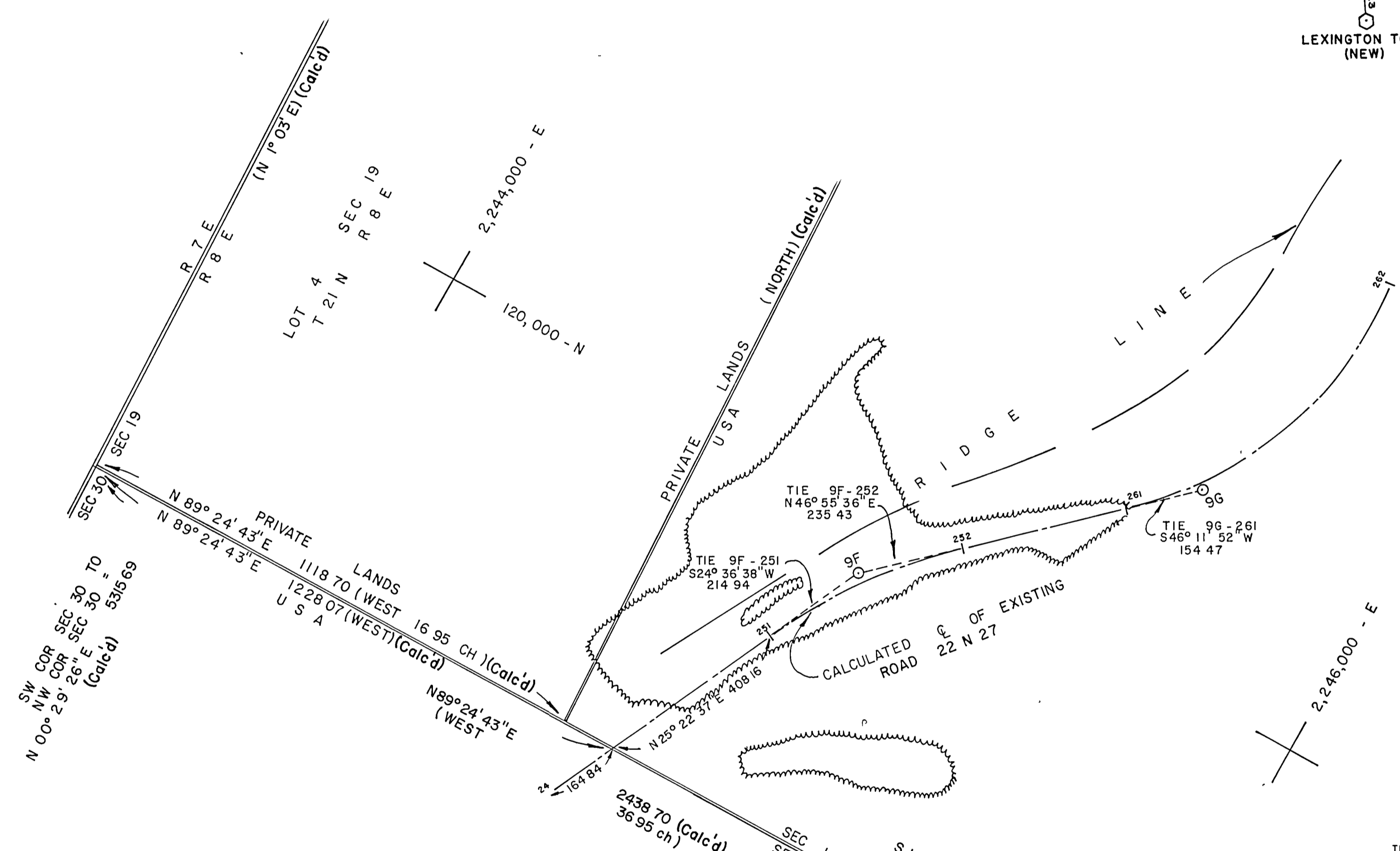
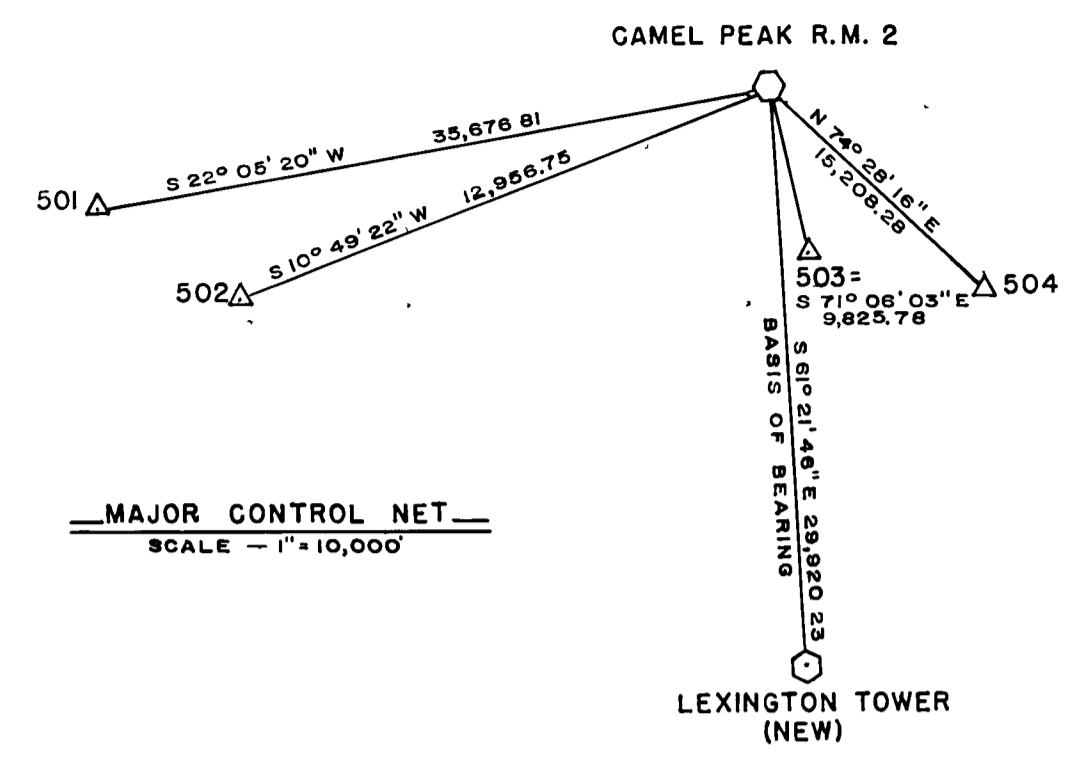


CALCULATED ROAD CENTERLINE TABULAR COURSES				CONTROL TRAVERSE TABULAR COURSES					
BEARING	DIST.	N COORDINATES	E	PT.	PT.	BEARING	DIST.	N COORDINATES	E
		119162.00000	2244694.99990	24	9E	N 24° 20' 53" E	1157.532	118820.551	2244552.859
N 25° 22' 36.9" E	573.00063	119679.71067	2244940.57150	251	9F	N 46° 54' 03" E	746.352	119875.129	2245030.085
21 43 41.1	1167.78245	444.55240	224.99999	441.87294	9G			120385.084	2245575.049
		120035.90793	2245202.05800	252					
N 47° 11' 17.9" E	356.47286	120278.16365	2245463.56340	261					



**SURVEYORS CERTIFICATE**  
 THIS MAP CORRECTLY REPRESENTS A SURVEY MADE BY ME OR UNDER MY DIRECTION IN CONFORMANCE WITH THE REQUIREMENTS OF THE LAND SURVEYORS ACT.  
 AT THE REQUEST OF U.S.F.S.  
 IN JAN - Nov. 1974  
*Richard Hogan*  
 L.S. 2798

**COUNTY SURVEYORS CERTIFICATE**  
 THE MAP HAS BEEN EXAMINED FOR CONFORMANCE WITH THE REQUIREMENTS OF THE LAND SURVEYORS ACT.  
 THIS 6th DAY OF January 1975  
*Janet R. K.*  
 COUNTY SURVEYOR  
 DEPUTY

**RECORDERS CERTIFICATE**  
 FILED FOR RECORD THIS 6th DAY OF JANUARY 1975 AT 3:40 P.M. IN BOOK 4 OF RECORD OF SURVEYS AT PAGE 66 AT THE REQUEST OF COUNTY ENGINEER  
*Dorothy Lee Marley*  
 COUNTY RECORDER  
*Ronald S. Brown*  
 DEPUTY  
 FEE \$21.00 PAID

- LEGEND**
- TREE LINE
  - FOUND SECTION CORNERS BY U.S.F.S.
  - PROTRACTED OR PROJECTED CORNER
  - SET 1/2" x 30" GALV. I.P. TRAVERSE POINT
  - △ SET 1" x 36" COPPERWELD MONUMENT WITH BRASS CAP STAMPED WITH STATION NUMBER "LS 2798 1973. RD. NO. 22N27"
  - PHYSICAL SIDE ROAD INTERSECTING LUMPKIN ROAD
  - RIDGE LINE WITH PEAK OR SUMMIT
  - DRAINAGE LINE
  - CALCULATED SECTION LINES UTILIZING GOV'T PLAT. FIELD NOTES ROTATED TO GRID BEARING.
  - DIRT TRAIL

THIS PLAT WAS PHOTOGRAMMETRICALLY COMPILED FROM VERTICAL AERIAL PHOTOGRAPHS BY HOGAN, SCHOCH, & ASSOCIATES, INC. AND MEETS THE SPECIFICATIONS PREPARED BY THE U.S. FOREST SERVICE. THE PHOTOGRAMMETRIC SURVEY OF ROAD NO. 22N27, LUMPKIN RIDGE ROAD, INVOLVED THE SECURING OF VERTICAL AERIAL PHOTOGRAPHY, THE ESTABLISHMENT OF HORIZONTAL CONTROL, COMPILATION OF A PLANIMETRIC MAP, PROTRACTION AND PROJECTION OF THE LAND NET FROM RECOVERED AND TIED-IN AUTHENTIC PROPERTY CORNERS AND PLOTTING AND CALCULATION OF CENTERLINE POSITION AND DESCRIPTION. ALL DATA PERTINENT TO THIS SURVEY IS ON FILE AT THE FOLLOWING ADDRESS.

U.S. FOREST SERVICE  
 DIVISION OF ENGINEERING  
 SURVEYS AND MAPS BRANCH  
 630 SANSOME STREET  
 SAN FRANCISCO, CALIFORNIA 94111

**Record of Survey**

U S DEPARTMENT OF AGRICULTURE  
 FOREST SERVICE

REGION 5 PLUMAS NATIONAL FOREST

RIGHT OF WAY- PLAT  
 OF LUMPKIN RIDGE ROAD NO. 22 N 27

GRANTOR \_\_\_\_\_

SECTION 19 T 21 N R 8 E

COUNTY OF PLUMAS STATE OF CALIFORNIA

SCALE. 1"=200 FT. JANUARY 1974

BASIS OF BEARING: CALIFORNIA COORDINATE SYSTEM ZONE 1  
 BEARINGS AND DISTANCES ON MAP ARE GRID.  
 TO CONVERT GRID DISTANCES TO GEODETIC.  
 MULTIPLY BY 1.00014334.

GRID TRUE

HOGAN, SCHOCH & ASSOC. INC.  
 ENGINEERING SURVEYING PHOTOGRAMMETRY  
 258 PETALUMA AVE. SEBASTOPOL. CALIFORNIA (707) 823-4479

PROJECT # PMS 1480 SHEET 1 OF 9

4RS 66