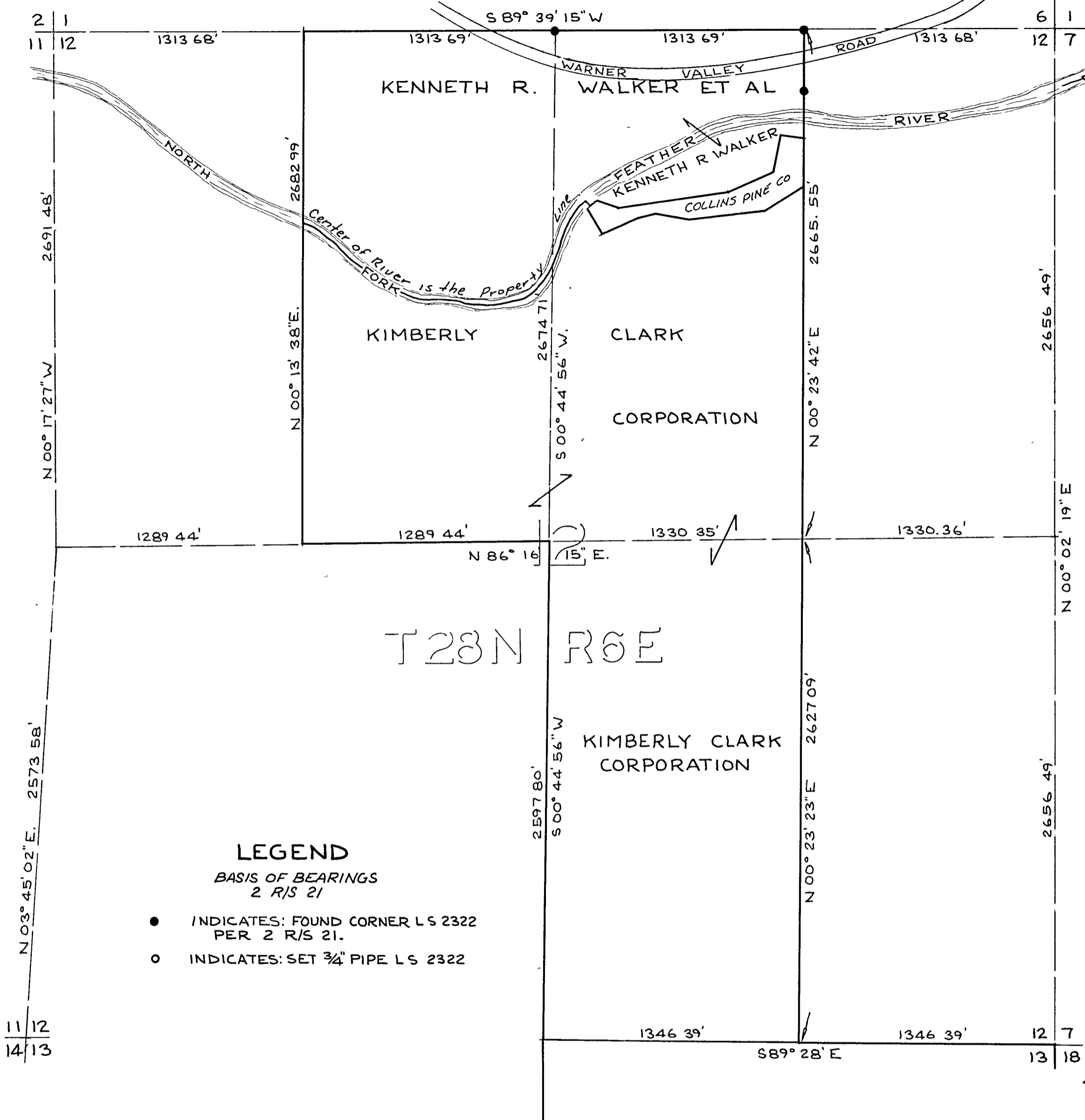


LOCATION MAP

SCALE 1"=500'



LEGEND

BASIS OF BEARINGS
2 R/S 21

- INDICATES: FOUND CORNER L.S. 2322 PER 2 R/S 21.
- INDICATES: SET 3/4" PIPE L.S. 2322

RECORDER'S CERTIFICATE

FILED THIS 31 DAY OF OCTOBER 1974 AT 8:45 A.M.
 IN BOOK 7 OF RECORD OF SURVEYS AT PAGE 59 AT
 THE REQUEST OF COUNTY ENGINEER
 FEE \$ 5.00

COUNTY RECORDER Rozzthy Neer Marley
 DEPUTY Carol Thomas

SURVEYOR'S CERTIFICATE

THIS MAP CORRECTLY REPRESENTS A SURVEY MADE BY ME OR UNDER MY DIRECTION IN CONFORMANCE WITH THE REQUIREMENTS OF THE LAND SURVEYOR'S ACT IN SEPTEMBER, 1974 AT THE REQUEST OF WILLIAM BEATY.

LOREN J. SARGENT Loren J. Sargent L.S. 2322

COUNTY SURVEYOR'S CERTIFICATE

THIS MAP HAS BEEN EXAMINED THIS 30th DAY OF September 1974, FOR CONFORMANCE WITH THE REQUIREMENTS OF THE LAND SURVEYOR'S ACT.

COUNTY SURVEYOR Loren J. Sargent
 DEPUTY _____

RECORD OF SURVEY

OF A PARCEL OF LAND ENCLOSING A PART OF THE COLLINS PINE COMPANY DITCH AND THE ROAD THAT SERVES SAID DITCH, AS RECORDED IN PLUMAS COUNTY OFFICIAL RECORDS.

THE N.W. 1/4 OF THE NE. 1/4 OF SECTION 12 T. 28 N. R. 6 E. M.D.M. IN THE UNINCORPORATED TERRITORY OF PLUMAS COUNTY CALIFORNIA.

SEPTEMBER 1974 SCALE 1"=100'
 LOREN J. SARGENT L.S. 2322
 FOR THE COLLINS PINE COMPANY

