

T. 27 & 28 N., R. 13 E., M. D. B. & M.

GENERAL NOTES

- 1. The bearings shown refer to the true meridian and were measured with a Warren Knight Sipe — Summer Pattern Compass No. 18124. The compass was set to the true meridian as established by solar observation.
- 2. All distance measurements to bearing trees refer to the center of the tree.
- 3. The brass cap is stamped with 1/8" figures and conform to the method of marking as given in the "Manual of Surveying Instructions 1947" U.S. Dept. Int. B.L.M. pages 253, 254, 255 and 256 entitled "Marks On Iron Post Monuments."
- 4. The declination setting of the compass for this station was 18° 05'.
- 5. The corner monument consists of a 2" diam. by 30" long galvanized pipe with brass cap marked as shown. The monument conforms with the type used by the Bureau of Land Management.

ABBREVIATIONS

- 1. DBH = Tree Diameter at Breast Height
- 2. BT = Bearing Tree
- 3. Lks. = Link (0.66 ft.)

SURVEYOR'S CERTIFICATE

This map correctly represents a survey made by me in conformance with the requirements of the "Land Surveyor's Act" at the request of Coin Lumber Company.

Robert W. Wickenden
Robert W. Wickenden RCE 7911

COUNTY SURVEYOR'S CERTIFICATE

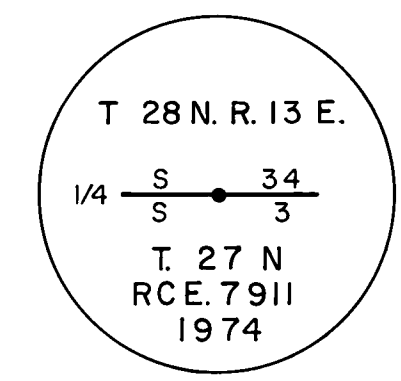
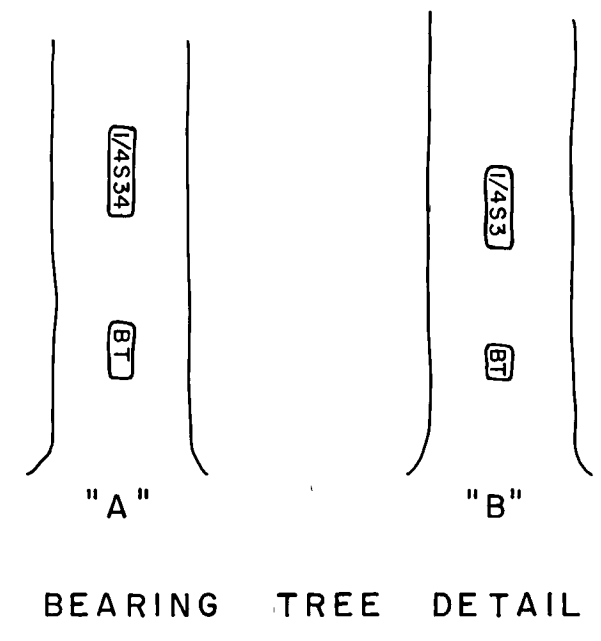
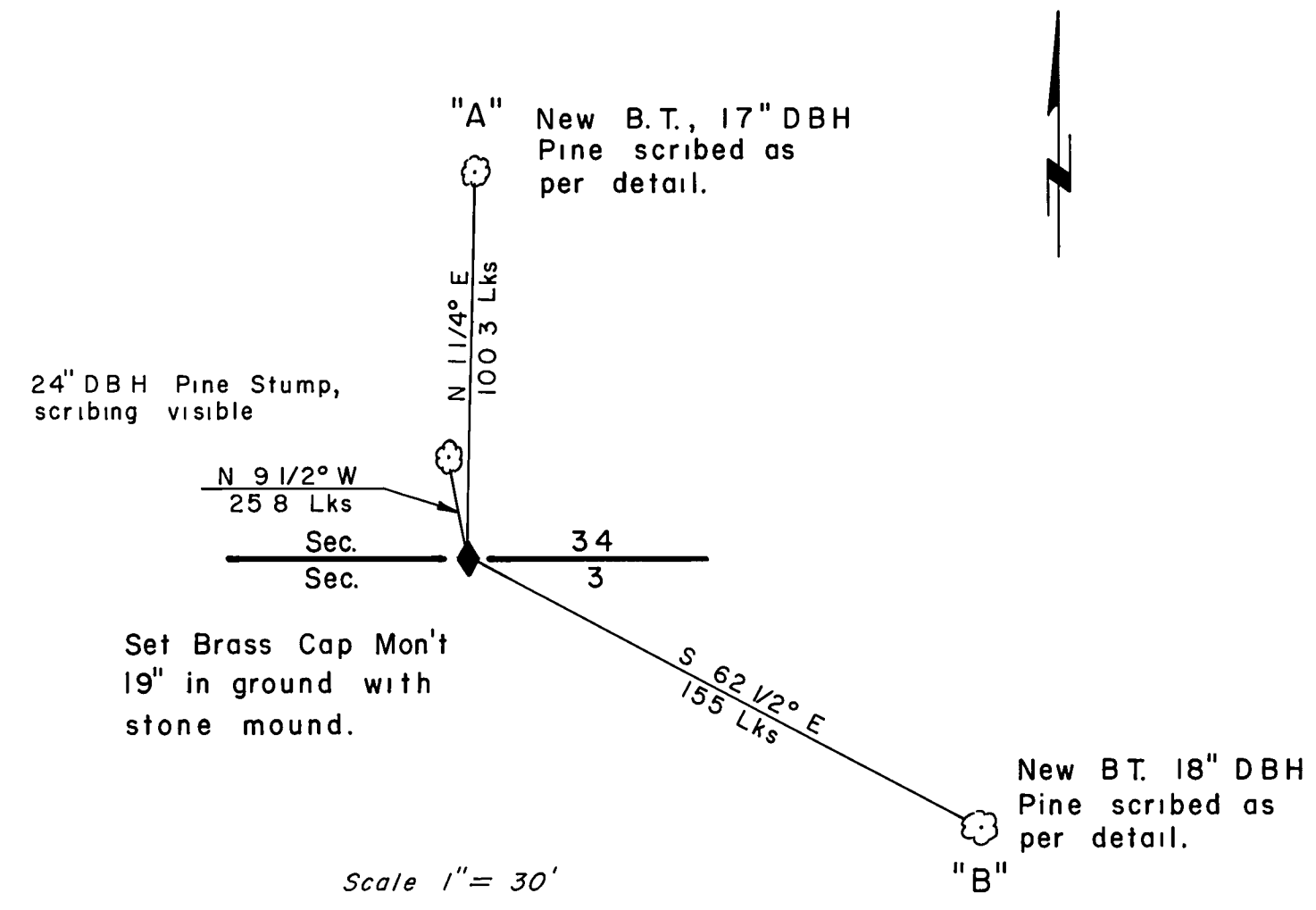
This map has been examined for conformance with the requirements of the "Land Surveyor's Act" this 19th day of July, 1974

Larry A. Fife
County Surveyor, Plumas County, California

COUNTY RECORDER'S CERTIFICATE

Filed for record this 19th day of July, 1974, at 35 minutes past 10 a.m., in Record of Survey Book 4, at Page 56, at the request of Coin Lumber Company, File No. 4RS 56

Donna New Marker
County Recorder, Plumas County, California



RECORD OF SURVEY	
1/4 CORNER REMONUMENTATION	
FOR	
COIN LUMBER COMPANY	
SUSANVILLE, CALIFORNIA	
ONE SHEET	MAY, 1974
Robert W. Wickenden	RCE 7911