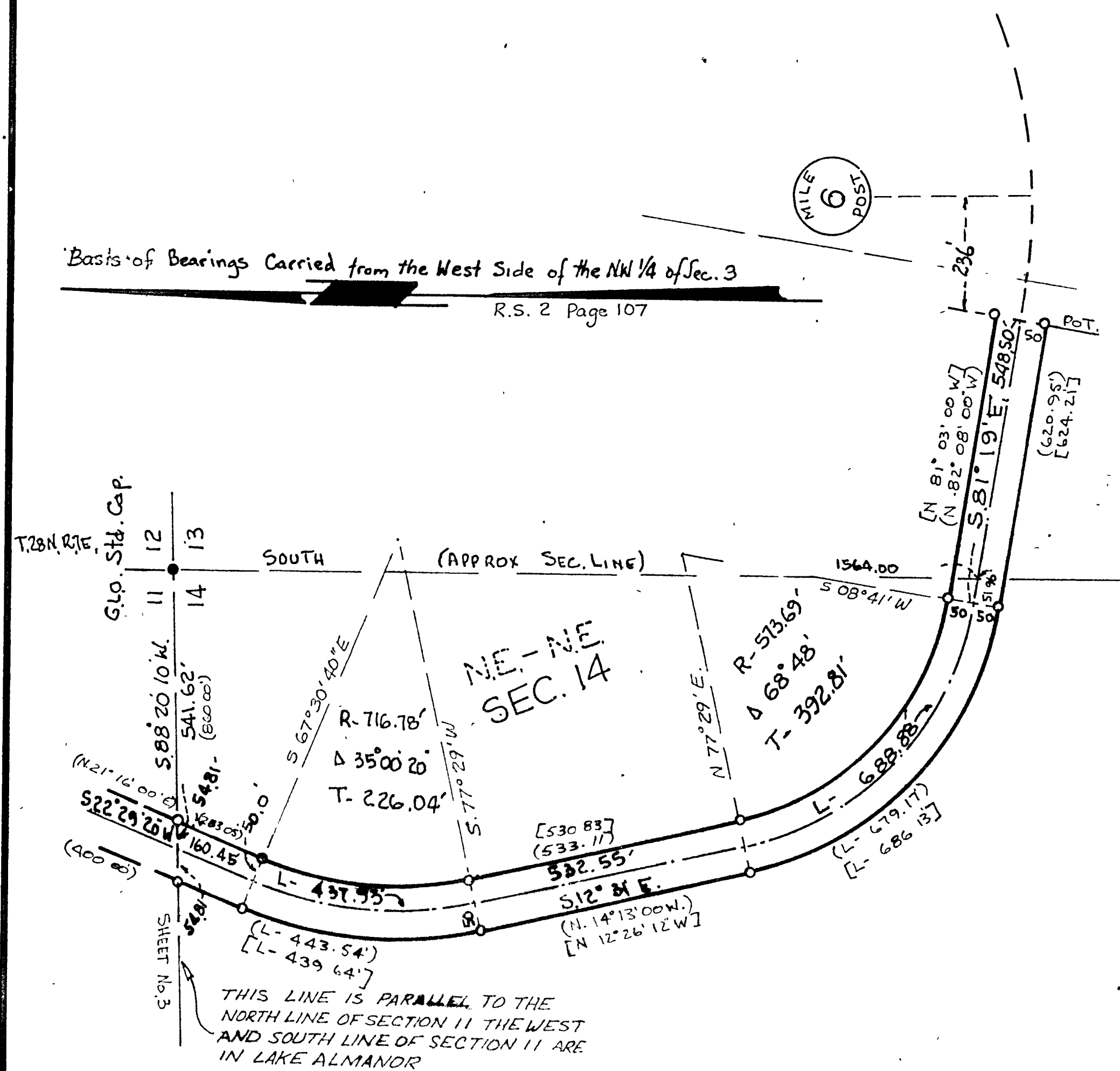


Legend

- Indicates Corner Found
- Indicates 3/4" Pipe Set and Taped L.S. 2322

SCALE 1" = 200'



— NOTE —
This map is amended to show the correct name of this Railroad.



AMENDING SURVEY MAP TO AMEND THE TITLE OF A MAP RECORDED IN BOOK 4 OF RECORD OF SURVEYS AT PAGES 43-46
A RECORD OF SURVEY TO MARK THE RIGHT-OF-WAY OF A PORTION OF THE ALMANDOR RAILROAD IN SECTIONS 2, 3, 11, 13, AND 14 T. 28 N. R. 7 E. M.D.M. IN THE UNINCORPORATED TERRITORY OF PLUMAS COUNTY, CALIF.

APRIL, 1974
LOREN J SARGENT, L S 2322

SCALE: 1" = 200'

Sheet 4 of 4 Sheets

T. 28 N. R. 7 E. Sec 2, 3, 11, 13, 14

4RS 50