

- FOUND POINTS -

SEC	PT	COORDINATES		DESCRIPTION	RECORDED AT	BK	OF	PG	SEC	PT	COORDINATES		DESCRIPTION	RECORDED AT	BK	OF	PG
		NORTH	EAST								NORTH	EAST					

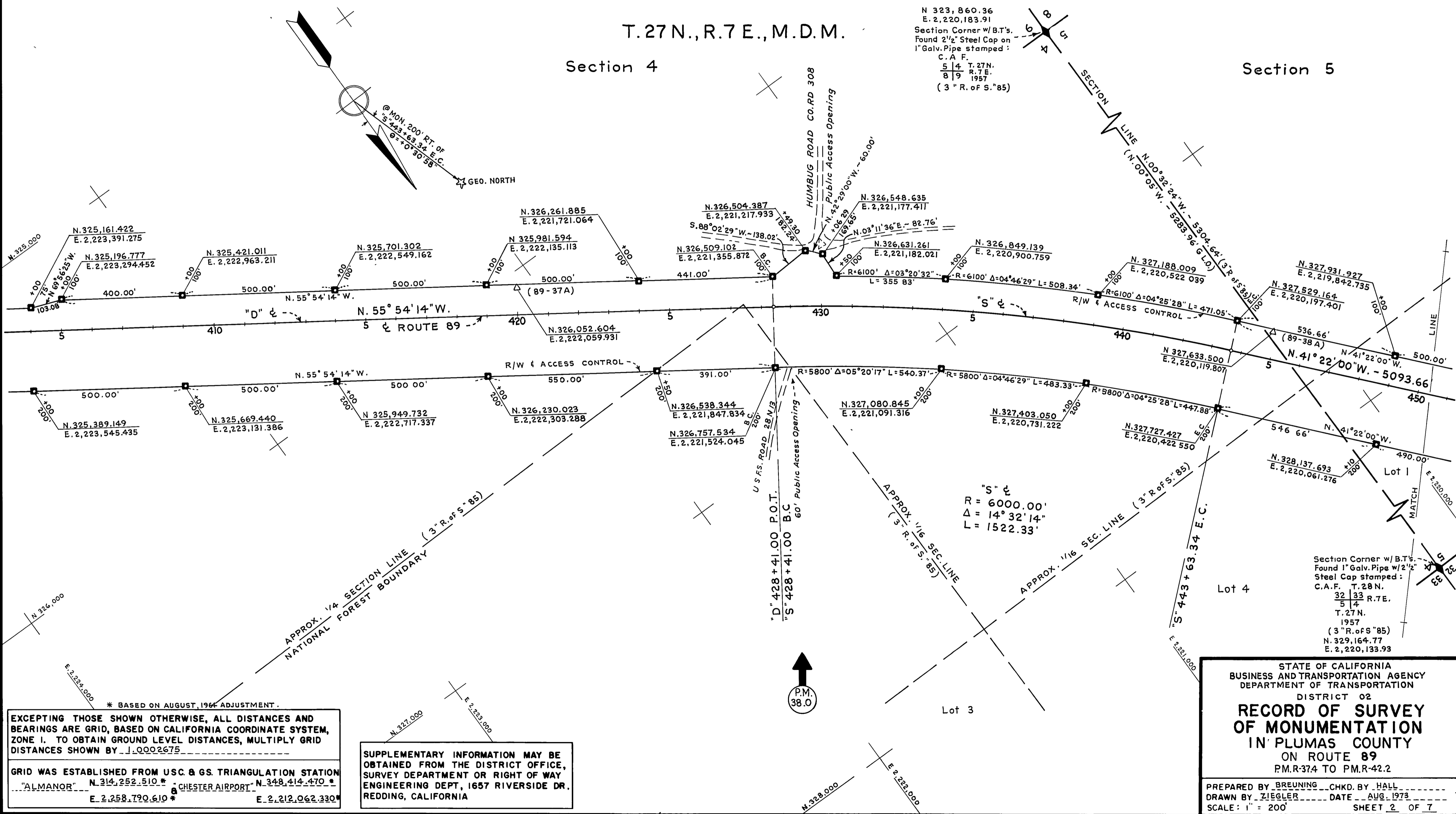
- LEGEND -

- SURVEY MONUMENT, SET STANDARD BRASS DISK IN CONCRETE.
- MONUMENT, SET T-BAR W/TAG, R.C.E. 5569.
- MONUMENT, AS NOTED.
- NO MONUMENT SET.
- PROPERTY MONUMENT, FOUND.
- PROPERTY MONUMENT FOUND AND REMOVED.
- SECTION OR FRACTIONAL CORNER, FOUND.
- SECTION OR FRACTIONAL CORNER, NOT LOCATED.

T. 27 N., R. 7 E., M. D. M.

Section 4

Section 5



\* BASED ON AUGUST, 1964 ADJUSTMENT.

EXCEPTING THOSE SHOWN OTHERWISE, ALL DISTANCES AND BEARINGS ARE GRID, BASED ON CALIFORNIA COORDINATE SYSTEM, ZONE I. TO OBTAIN GROUND LEVEL DISTANCES, MULTIPLY GRID DISTANCES SHOWN BY 1.0002675.

GRID WAS ESTABLISHED FROM U.S. & G.S. TRIANGULATION STATION "ALMANOR" N. 314,252.510 \* E. 2,258,790.610 \* CHESTER AIRPORT N. 348,414.470 \* E. 2,212,062.330 \*

SUPPLEMENTARY INFORMATION MAY BE OBTAINED FROM THE DISTRICT OFFICE, SURVEY DEPARTMENT OR RIGHT OF WAY ENGINEERING DEPT, 1657 RIVERSIDE DR, REDDING, CALIFORNIA

STATE OF CALIFORNIA  
BUSINESS AND TRANSPORTATION AGENCY  
DEPARTMENT OF TRANSPORTATION  
DISTRICT 02

**RECORD OF SURVEY OF MONUMENTATION**  
IN PLUMAS COUNTY  
ON ROUTE 89  
P.M.R. 374 TO P.M.R. 422

PREPARED BY BREUNING CHKD. BY HALL  
DRAWN BY ZIEGLER DATE AUG. 1973  
SCALE: 1" = 200' SHEET 2 OF 7