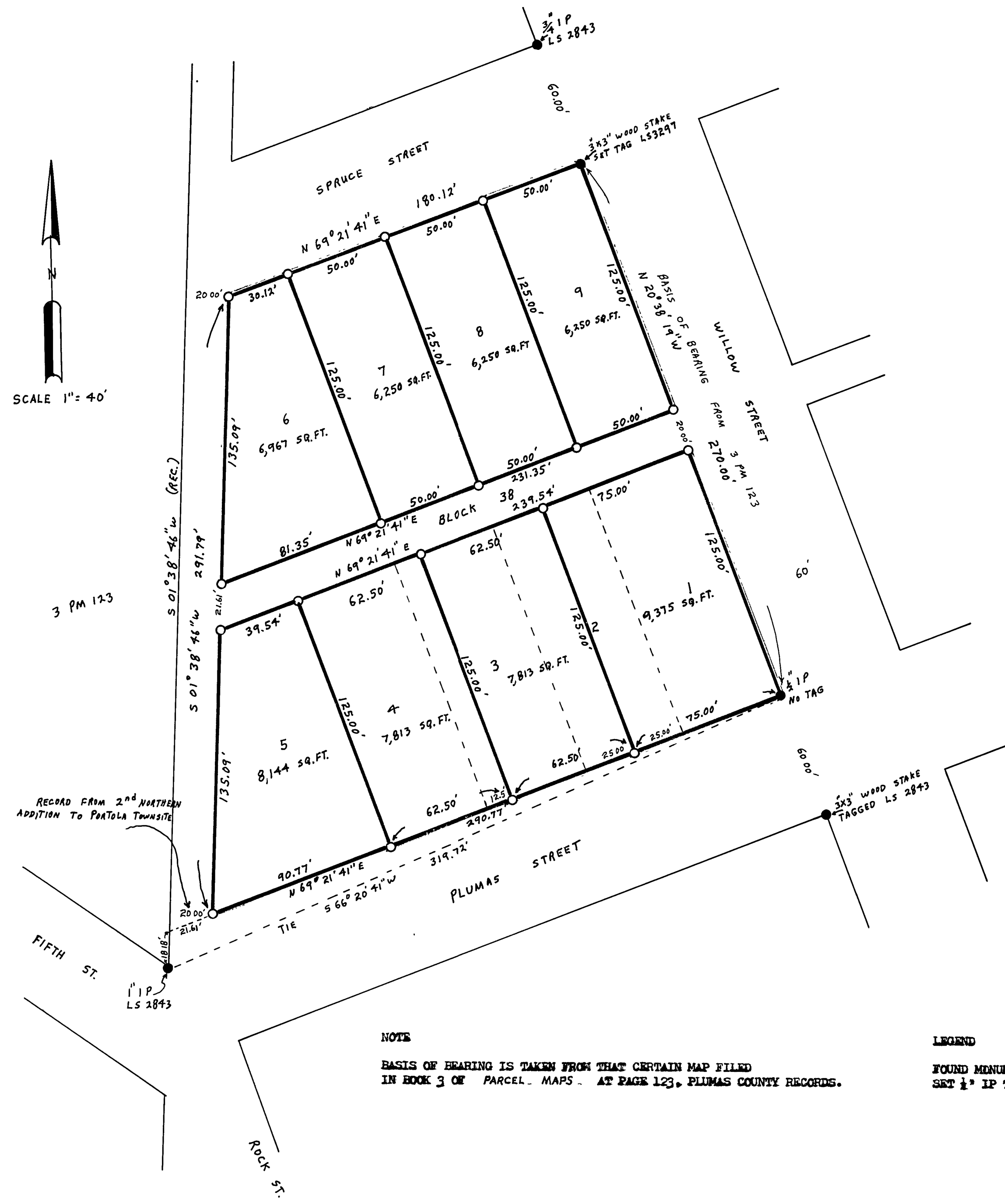


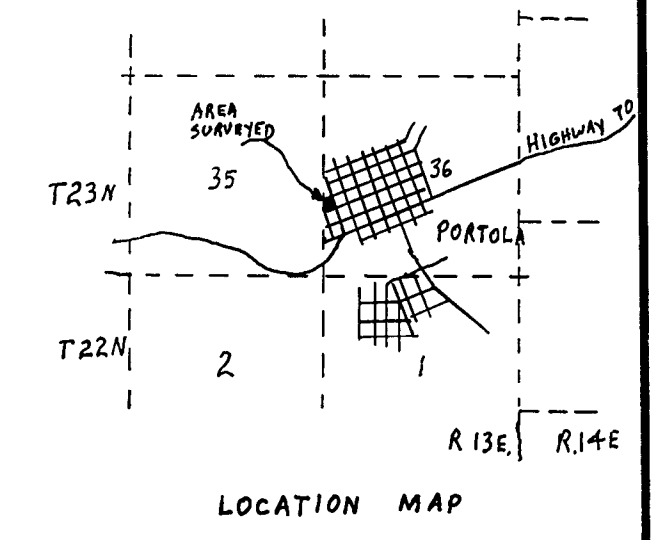
SCALE 1" = 40'



NOTE

LOT LINE RELOCATION BETWEEN LOTS 3 AND 4 AS SHOWN HEREON APPROVED BY THE CITY OF PORTOLA PLANNING COMMISSION AT ITS REGULAR MEETING ON DECEMBER 21, 1972.

John P. Thompson
CHAIRMAN



SURVEYOR'S CERTIFICATE

THIS MAP CORRECTLY REPRESENTS A SURVEY MADE BY ME OR UNDER MY DIRECTION IN CONFORMANCE WITH THE REQUIREMENTS OF THE LAND SURVEYORS ACT AT THE REQUEST OF W. R. TURNER IN NOVEMBER 1972.

Gerald C. Henderson
GERALD C. HENDERSON LS 3297

COUNTY SURVEYOR'S CERTIFICATE

THIS MAP HAS BEEN EXAMINED FOR CONFORMANCE WITH THE REQUIREMENTS OF THE LAND SURVEYORS ACT THIS 14th DAY OF FEB. 1973.

Darrell P. Payne
DARRELL P. PAYNE RCE 8596

COUNTY RECORDER'S CERTIFICATE

FILED THIS 14th DAY OF February, 1973, AT 9:30 AM. IN BOOK 4 OF RECORD OF SURVEYS, AT PAGE 24, AT THE REQUEST OF GERALD C. HENDERSON.

FEE 5.00
RECORDING NO. 3650

Donna M. Markley
COUNTY RECORDER

RECORD OF SURVEY

A PORTION OF SECTION 36, T. 23N., R. 13E., NEM
LOTS 1 THROUGH 9, BLOCK 38, NORTHERN ADDITION PORTOLA TOWNSITE
CITY OF PORTOLA, PLUMAS COUNTY, CALIF.

NOTE

BASIS OF BEARING IS TAKEN FROM THAT CERTAIN MAP FILED IN BOOK 3 OF PARCEL MAPS AT PAGE 123, PLUMAS COUNTY RECORDS.

LEGEND

FOUND MONUMENT DESCRIBED ABOVE
SET 1/2" IP TAGGED LS 3297



GERALD C. HENDERSON
LICENSED LAND SURVEYOR
P. O. BOX 13
PORTOLA, CALIFORNIA