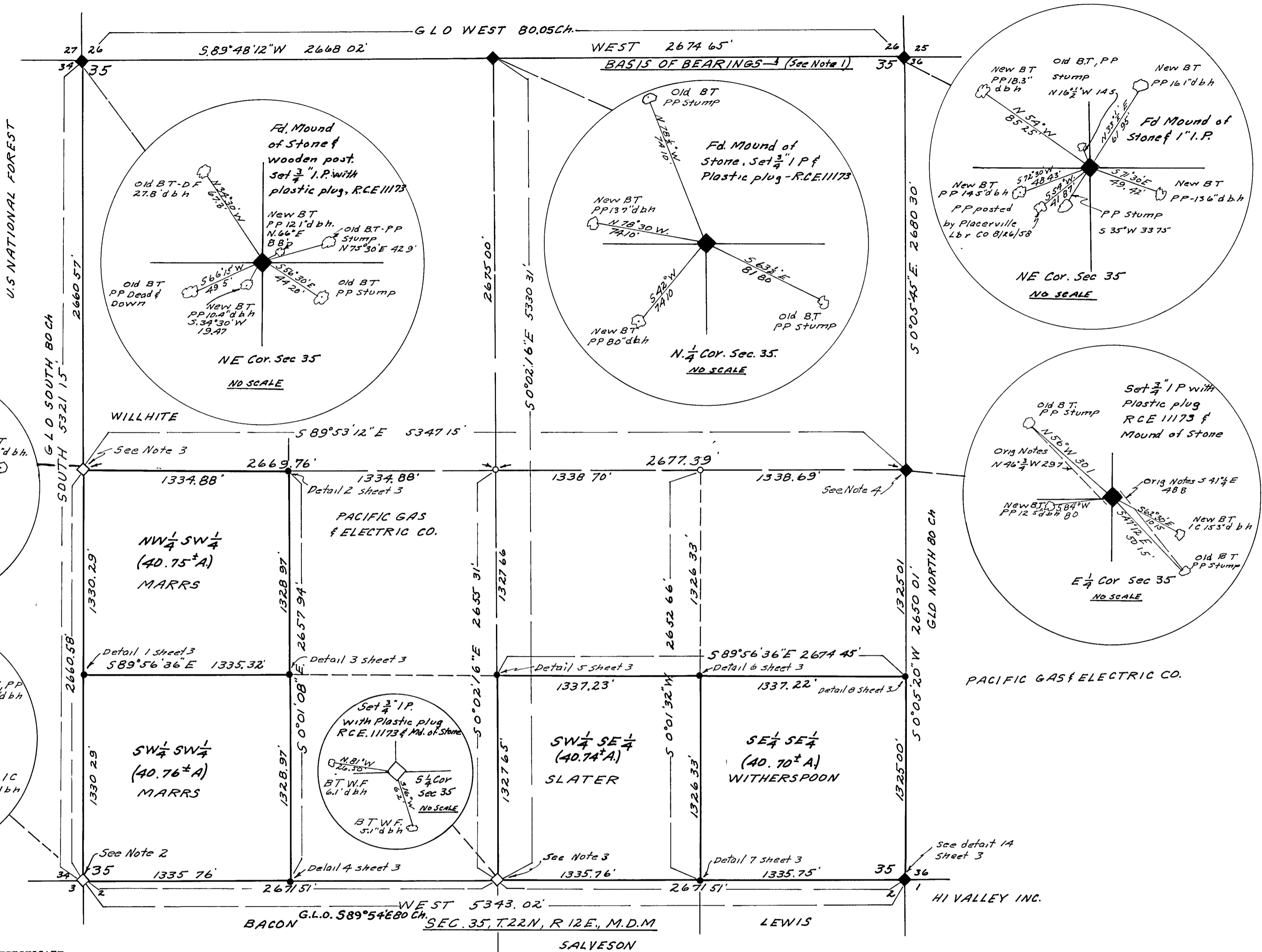


- LEGEND**
- ◆ Original Section and 1/4 Sec. corners confirmed, as noted
 - ◇ Sec. corners and 1/4 Sec. corners reset, as noted
 - 1/16 Sec. Cors. set. 1/2" Steel Pin with plastic cap stamped "R.C.E. 11173", set mound of stone and bearing trees (with Forest Service "X" tags) as noted on details
 - Computed corner location. No monument set
 - I.P. Iron Pipe
 - B.T. Bearing Tree
 - S.P. Sugar Pine
 - W.F. White Fir
 - R.F. Red Fir
 - P.P. Ponderosa Pine
 - I.C. Incense Cedar
 - D.F. Douglas Fir
 - d.b.h. Diameter breast high (for Bearing Trees marked)
 - Md. Mound
 - Fd. Found
 - Rebar. Reinforcing Bar (3/4" Steel Pin)
 - R.C.E. Registered Civil Engineer
 - CW Center West
 - CN Center North
 - CE Center East
 - CS Center South
 - 1/16 Sec. Corners
 - G.L.O. General Land Office
 - B.L.M. Bureau of Land Management (Successor to G.L.O.)



COUNTY SURVEYOR'S CERTIFICATE

This map has been examined for conformance with the requirements of the Land Surveyor's Act this 1st day of February, 1972.

Danell Payne
Plumas County Surveyor

SURVEYOR'S CERTIFICATE

This map correctly represents a survey made by me or under my direction in conformance with the requirements of the Land Surveyor's Act at the request of Charles J. Marra, Gene Slater, Frank Witherspoon, Jerome Salveson, H. W. Lewis, Richard Johnson and Cleo C. Nebergall.

John C. Simpson
John C. Simpson
R.C.E. 11173



JOHN C SIMPSON, PE
CIVIL ENGINEER
P.O. BOX 719
QUINCY, CALIFORNIA

RECORD OF SURVEY

OF RETRACEMENT AND SUBDIVISION

OF SEC. 2, T.2 N., R.12 E. AND SEC. 35, T.22 N., R.12 E., M.D.M. AND SURVEY OF LANDS OF

MARRS, SLATER, WITHERSPOON, SALVESON, LEWIS, NEBERGALL AND JOHNSON WITHIN THE UNINCORPORATED PORTION OF COUNTY OF PLUMAS, STATE OF CALIFORNIA

JANUARY 1972

COUNTY RECORDER'S CERTIFICATE

Filed this 3rd day of February, 1972, at 4:40 P.M. in Book 4 of Records of Survey at Page 8 at the request of John C. Simpson.

Dorothy New Masley
Plumas County Recorder

Fee \$ 9.00
File No. 4074

4RS 8