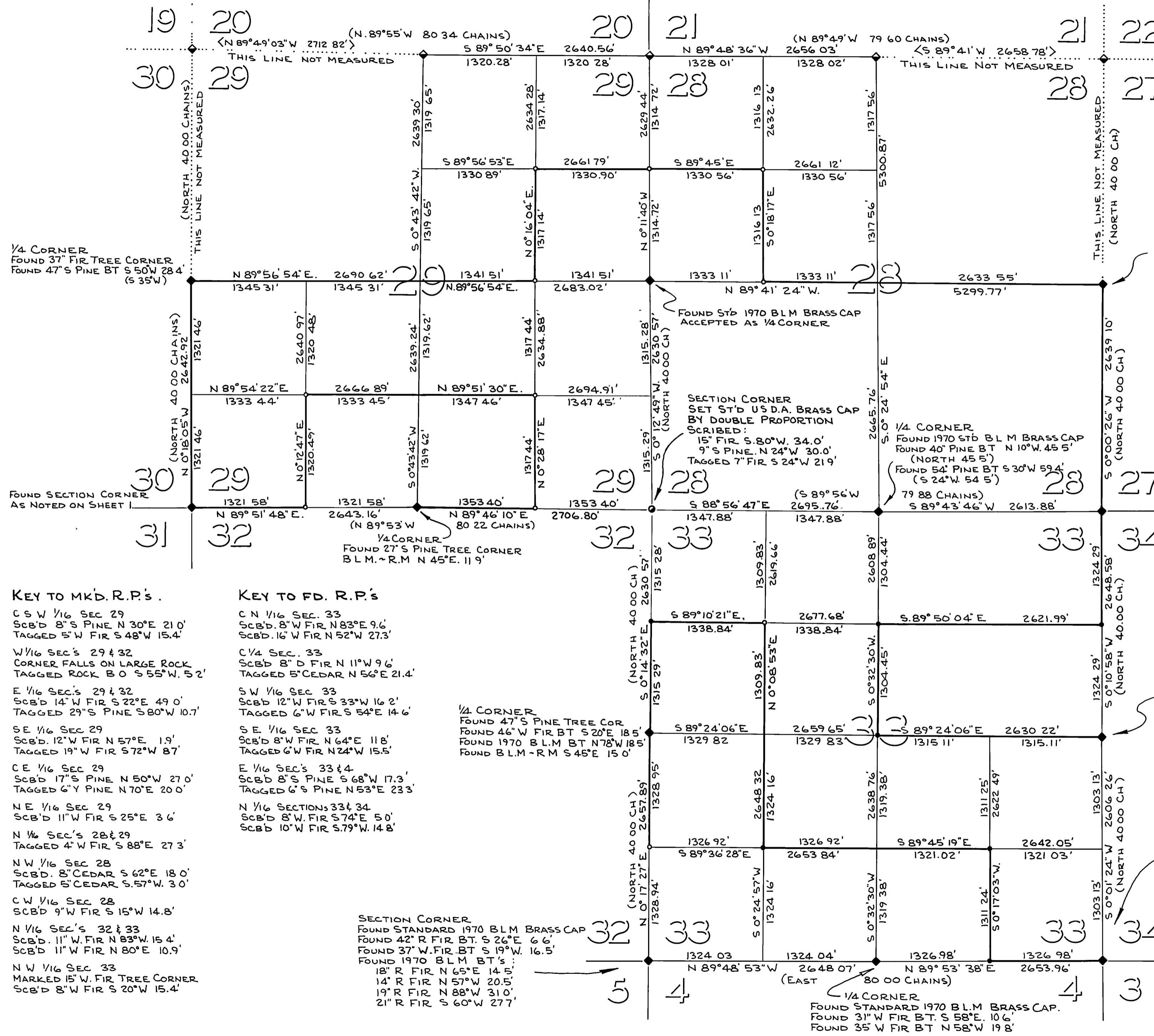


~ BASIS OF BEARINGS - 2 RS 25 ~

LEGEND:

- ◆ INDICATES FOUND CORNER AS NOTED
- INDICATES SET 5/8" ROD 1/2" ALUMINIUM CAP - L.S. 3621
- ◆ INDICATES FOUND CORNER - PER 2 R.O.S 25 THAT WERE REMONUMENTED BY THE B.L.M. IN 1970.
- INDICATES FOUND 3/4" I.P. - L.S. 2322
- ◊ EMBRACES DATA PER 2 R.O.S 25
- () EMBRACES G.L.O. DATA
- INDICATES SET CORNER AS NOTED



KEY TO MK'D. R.P.'s.

- C S W 1/16 SEC 29
SCB'D 8" S PINE N 30° E 21.0'
TAGGED 5" W FIR S 48° W 15.4'
- W 1/16 SEC'S 29 & 32
CORNER FALLS ON LARGE ROCK
TAGGED ROCK B O S 55° W. 52'
- E 1/16 SEC'S 29 & 32
SCB'D 14" W FIR S 22° E 49.0'
TAGGED 29" S PINE S 80° W 10.7'
- SE 1/16 SEC 29
SCB'D 12" W FIR N 57° E 1.9'
TAGGED 19" W FIR S 72° W 87'
- CE 1/16 SEC 29
SCB'D 17" S PINE N 50° W 27.0'
TAGGED 6" Y PINE N 70° E 20.0'
- NE 1/16 SEC 29
SCB'D 11" W FIR S 25° E 3.6'
- N 1/16 SEC'S 28 & 29
TAGGED 4" W FIR S 88° E 27.3'
- NW 1/16 SEC 28
SCB'D 8" CEDAR S 62° E 18.0'
TAGGED 5" CEDAR S 57° W 3.0'
- CW 1/16 SEC 28
SCB'D 9" W FIR S 15° W 14.8'
- N 1/16 SEC'S 32 & 33
SCB'D 11" W FIR N 83° W 15.4'
SCB'D 11" W FIR N 80° E 10.9'
- NW 1/16 SEC 33
MARKED 15" W FIR TREE CORNER
SCB'D 8" W FIR S 20° W 15.4'

KEY TO FD. R.P.'s

- C N 1/16 SEC. 33
SCB'D 8" W FIR N 83° E 9.6'
SCB'D 16" W FIR N 52° W 27.3'
- C 1/4 SEC. 33
SCB'D 8" D FIR N 11° W 9.6'
TAGGED 5" CEDAR N 56° E 21.4'
- S W 1/16 SEC 33
SCB'D 12" W FIR S 33° W 16.2'
TAGGED 6" W FIR S 54° E 14.6'
- S E 1/16 SEC 33
SCB'D 8" W FIR N 64° E 11.8'
TAGGED 6" W FIR N 24° W 15.5'
- E 1/16 SEC'S 33 & 34
SCB'D 8" S PINE S 68° W 17.3'
TAGGED 6" S PINE N 53° E 23.3'
- N 1/16 SECTIONS 33 & 34
SCB'D 8" W FIR S 74° E 5.0'
SCB'D 10" W FIR S 79° W 14.8'

SECTION CORNER
FOUND STANDARD 1970 B.L.M BRASS CAP
FOUND 42" R FIR BT. S 26° E 6.6'
FOUND 37" W FIR BT S 19° W 16.5'
FOUND 1970 B.L.M BT'S :
18" R FIR N 65° E 14.5'
14" R FIR N 57° W 20.5'
19" R FIR N 88° W 31.0'
21" R FIR S 60° W 27.7'

1/4 CORNER
FOUND 47" S PINE TREE COR
FOUND 46" W FIR BT S 20° E 18.5'
FOUND 1970 B.L.M BT N 78° W 18.5'
FOUND B.L.M - R.M S 45° E 15.0'

1/4 CORNER
FOUND STANDARD 1970 B.L.M BRASS CAP
FOUND 20" Y PINE B.L.M BT. N 75 1/2° E
FOUND 33" Y PINE BT (G.L.O) N 70° W. 25.7' (N 70° E. 19.1')

SECTION CORNER
FOUND STANDARD 1970 B.L.M BRASS CAP
FOUND 41" FIR BT. N 66° E. 25.1'
FOUND 25" FIR BT N 10° W. 16.5'
FOUND 37" FIR BT (SNAG) S 14° W 13.9' (S 9° W 10.6')
FOUND 1970 B.L.M BT'S :
4" S. PINE S 42° E 35.6'
8" FIR S 69° W 24.4'

1/4 CORNER
FOUND 3/4" I.P. - L.S. 2322
FOUND 49" Y PINE BT. EAST 6.6'

SECTION CORNER
FOUND STANDARD 1970 B.L.M BRASS CAP
FOUND 24" S. PINE BT N 45° E. 63.4'
FOUND 32" W. FIR BT N 53° W. 70.0'
FOUND 1970 B.L.M BT'S :
17" W. FIR S 72° W 19.8'
21" Y PINE S 46° E 23.8'

RECORD OF SURVEY
OF SECTIONS 28, 29, 31, & 33 T. 27 N. R. 6 E. M.D.M.
PLUMAS COUNTY CALIFORNIA.
FOR CROCKER NATIONAL BANK & U.S.F.S.
SEPT 1977 SCALE 1"=800'
RODNEY D DAWSON ~ L.S. 3621 SHEET 2 OF 2

BASIS OF BEARINGS: 2 R.O.S 25

SCALE:
1"=500'