

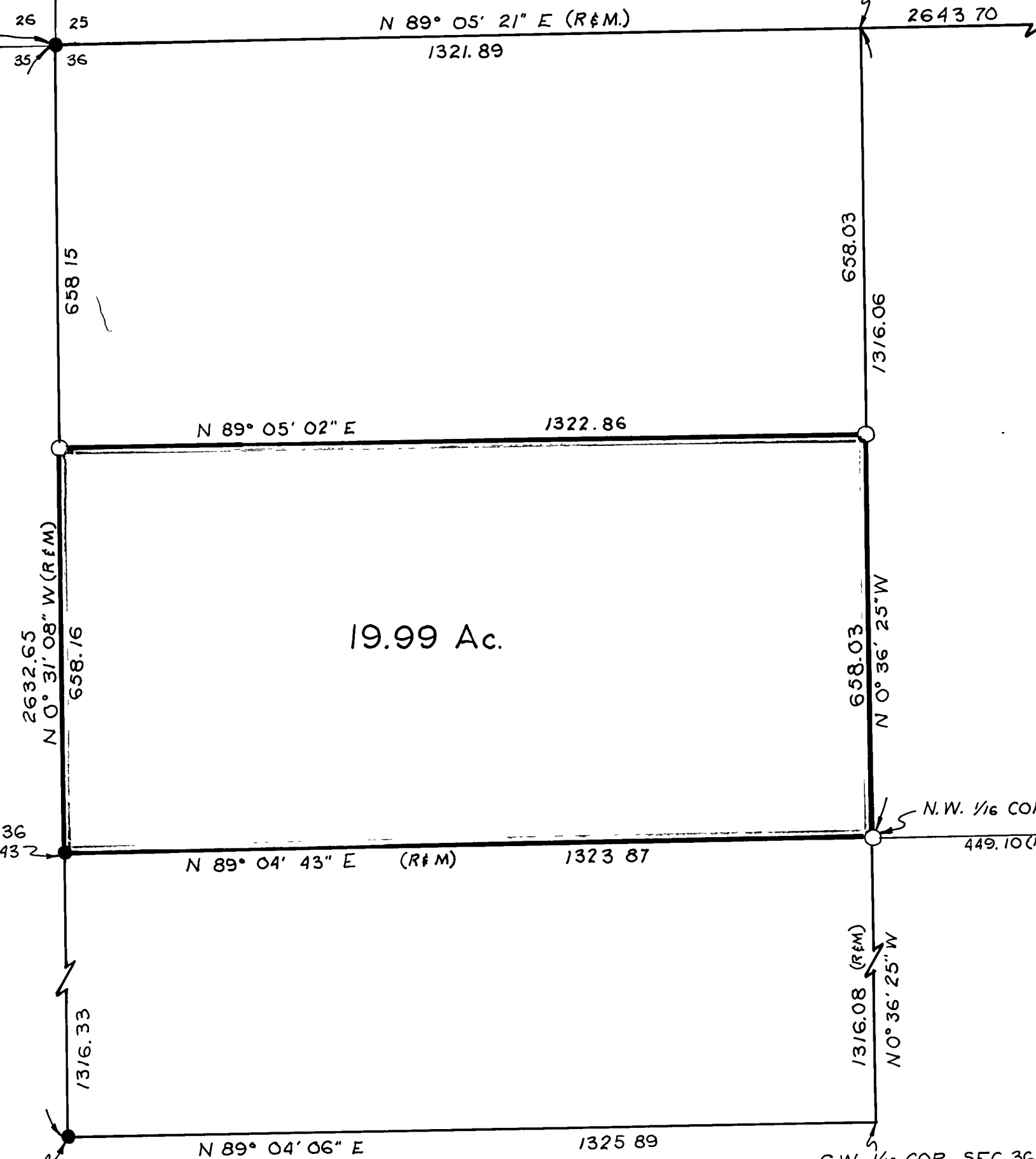
N.W. COR SEC 36
FD STEEL PIN IN
MOUND OF ROCKS
TAGGED LS 2843

N. 1/4 COR SEC 36

N 1/4 COR SEC 36
FD BRASS CAP IN
CONCRETE, LS 3536

W. 1/4 COR SEC 36
FD 3/4" IP, LS 2843

W. 1/4 COR SEC 36
FD TOPPER, LS 2843

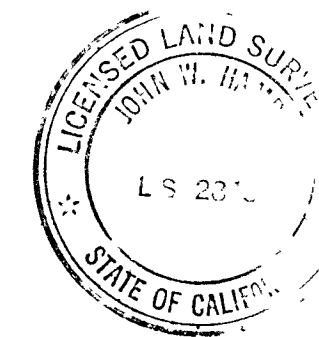


LEGEND:

- = Found point as noted
- = Set 3/8" rebar, capped LS 2843
- (R) = Record
- (M) = Measured
- └ = Calculated corner

BASIS OF BEARING:

The West line of Section 36, shown as N0° 31' 08" W on the Parcel Map recorded in Book 5 of Parcel Maps at Page 119, Plumas County Records.



SURVEYOR'S CERTIFICATE

This map correctly represents a survey made by me or under my direction in conformance with the requirements of the Land Surveyors Act at the request of Robert Stevens, September, 1977.

John W. Hamby
John W. Hamby LS 2843

COUNTY SURVEYOR'S CERTIFICATE

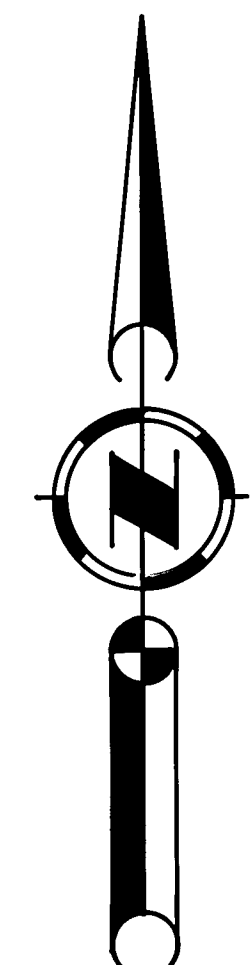
This map has been examined for conformance with the requirements of the Land Surveyors Act this 26th day of Sept., 1977.

Larry A. Fites
Larry A. Fites RCE 13225
Plumas County Surveyor
(By) Clyde R. Dunn, Ass't.

RECORDER'S CERTIFICATE

Filed this 26th day of SEP, 1977 at 2:45 P.m.
in Book 4 of Records of Survey at Page 131 at
the request of the County Engineer
File No. 15 Fee \$5.
Raynelle Slaten
Plumas County Recorder

by Kathleen Doll
Deputy



SCALE: 1" = 200'

RECORD OF SURVEY
for

ROBERT STEVENS

OF A PORTION OF THE N.W. 1/4 OF SEC. 36,
T. 23 N., R. 16 E., M.D.B. & M.
PLUMAS COUNTY, CALIFORNIA

By
John W. Hamby LS 2843
Licensed Land Surveyor
PO Box 842, 832 5571
Portola, California