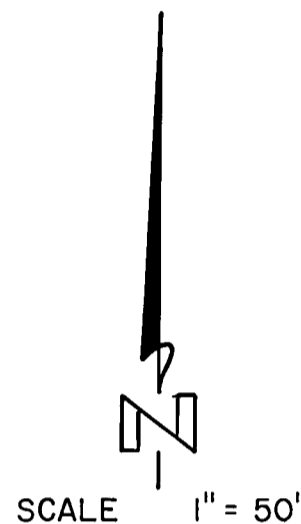
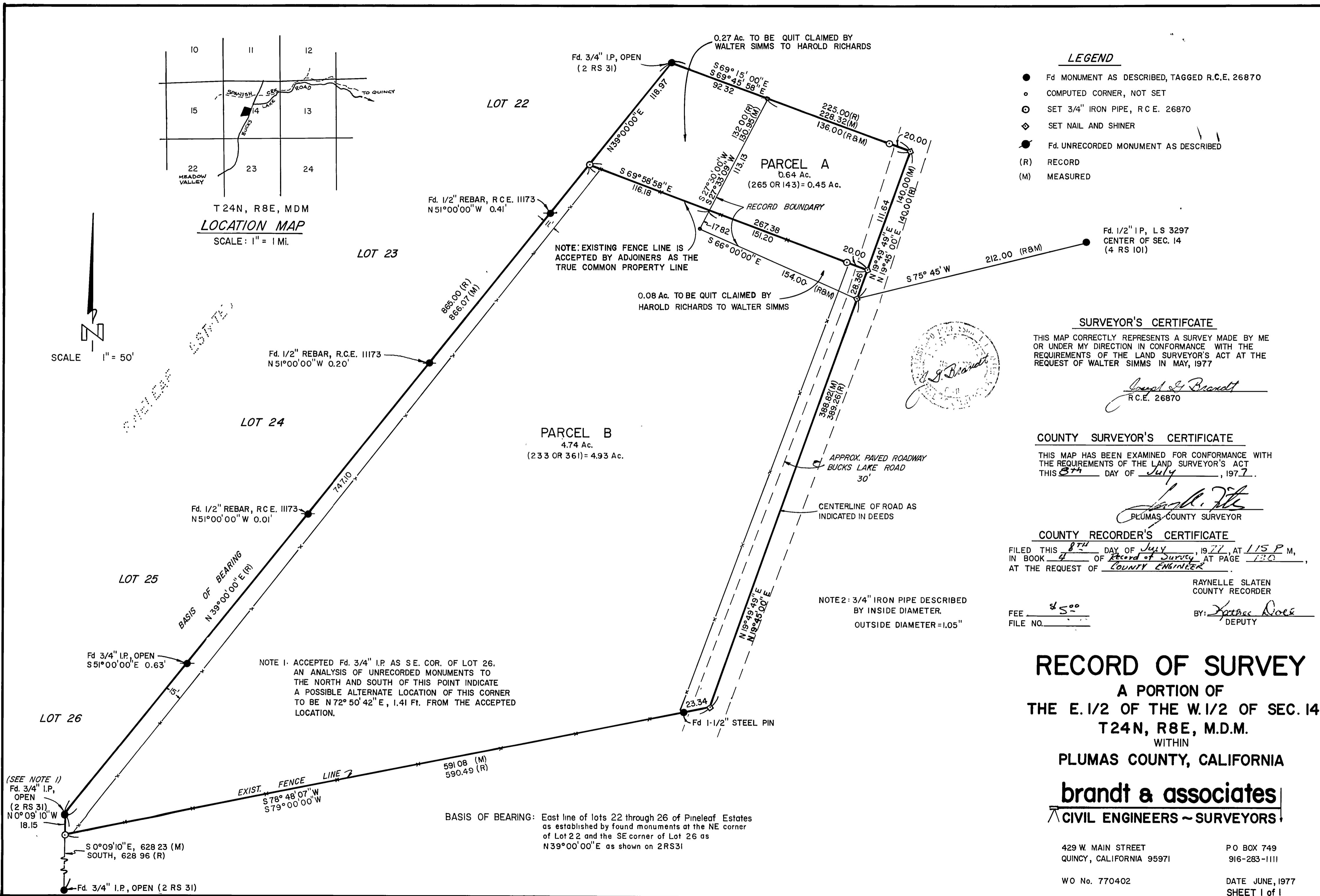


T 24N, R 8E, MDM
LOCATION MAP
SCALE: 1" = 1 Mi.



SCALE 1" = 50'

PINELEAF ESTATES



- LEGEND**
- Fd MONUMENT AS DESCRIBED, TAGGED R.C.E. 26870
 - COMPUTED CORNER, NOT SET
 - ⊙ SET 3/4" IRON PIPE, R.C.E. 26870
 - ◆ SET NAIL AND SHINER
 - Fd. UNRECORDED MONUMENT AS DESCRIBED
 - (R) RECORD
 - (M) MEASURED

SURVEYOR'S CERTIFICATE
THIS MAP CORRECTLY REPRESENTS A SURVEY MADE BY ME OR UNDER MY DIRECTION IN CONFORMANCE WITH THE REQUIREMENTS OF THE LAND SURVEYOR'S ACT AT THE REQUEST OF WALTER SIMMS IN MAY, 1977

Joseph G. Brandt
R.C.E. 26870

COUNTY SURVEYOR'S CERTIFICATE
THIS MAP HAS BEEN EXAMINED FOR CONFORMANCE WITH THE REQUIREMENTS OF THE LAND SURVEYOR'S ACT THIS 8th DAY OF July, 1977.

Joseph G. Brandt
PLUMAS COUNTY SURVEYOR

COUNTY RECORDER'S CERTIFICATE
FILED THIS 8th DAY OF July, 1977, AT 1:15 P.M., IN BOOK 4 OF Record of Survey AT PAGE 130, AT THE REQUEST OF COUNTY ENGINEER

RAYNELLE SLATEN
COUNTY RECORDER

BY: *Kathleen Rice*
DEPUTY

RECORD OF SURVEY
A PORTION OF
THE E. 1/2 OF THE W. 1/2 OF SEC. 14
T 24N, R 8E, M.D.M.
WITHIN
PLUMAS COUNTY, CALIFORNIA

brandt & associates
CIVIL ENGINEERS ~ SURVEYORS

429 W. MAIN STREET
QUINCY, CALIFORNIA 95971

P.O. BOX 749
916-283-1111

WO No. 770402

DATE JUNE, 1977
SHEET 1 of 1