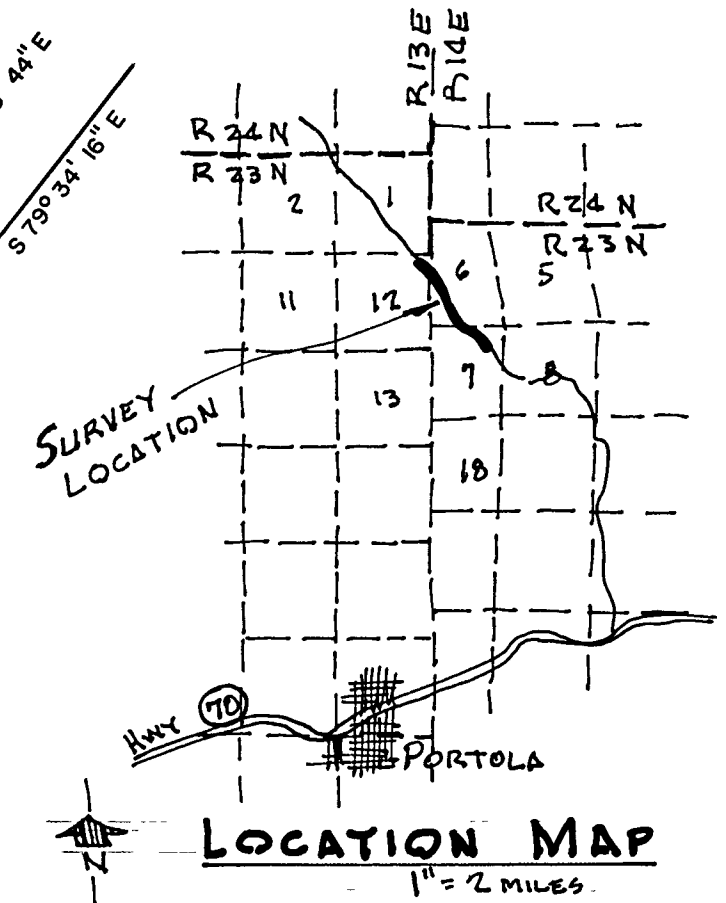
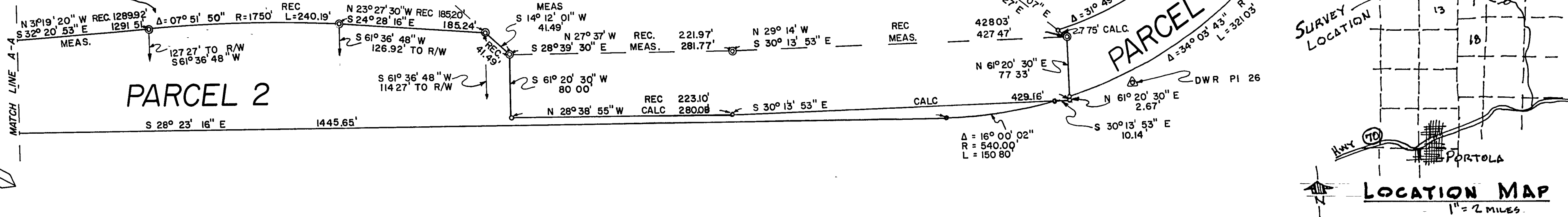
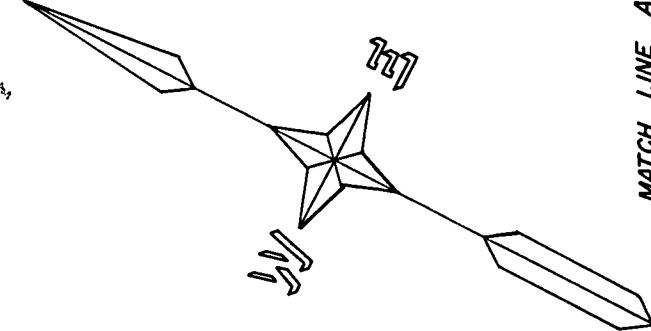


NOTE  
A CIRCULAR CURVE WILL NOT FIT  
THE FIELD MONUMENTS. DISTANCE  
AND BEARING BETWEEN FOUND B.C.  
AND E.C. IS N 28° 23' 38" W, 240.78'

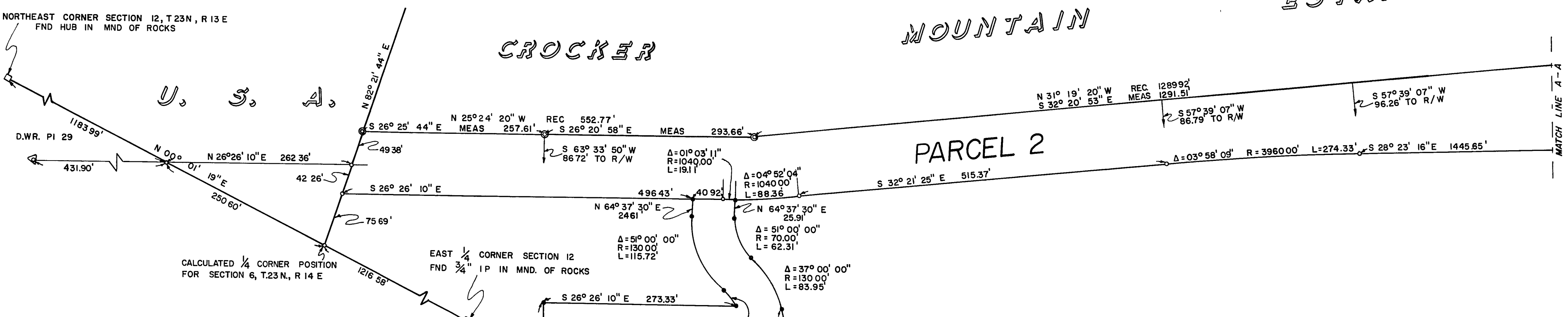
### CROCKER MOUNTAIN ESTATES

### WELCH UNIT ESTATES NO. 3

TIE TO EAST 1/4 CORNER SECTION 12, T.23N, R.13E  
FND. 3/4" IP IN MND. OF ROCKS  
N 50° 31' 35" W  
2401.83'



NORTHEAST CORNER SECTION 12, T.23N, R.13E  
FND HUB IN MND OF ROCKS



NOTE:  
THE BASIS OF BEARING OF THIS MAP IS THE EAST LINE OF SECTION  
12, AS DESCRIBED ON THAT CERTAIN RECORD OF SURVEY MAP FILED IN  
BOOK 3, RECORD OF SURVEYS AT PAGE 101.

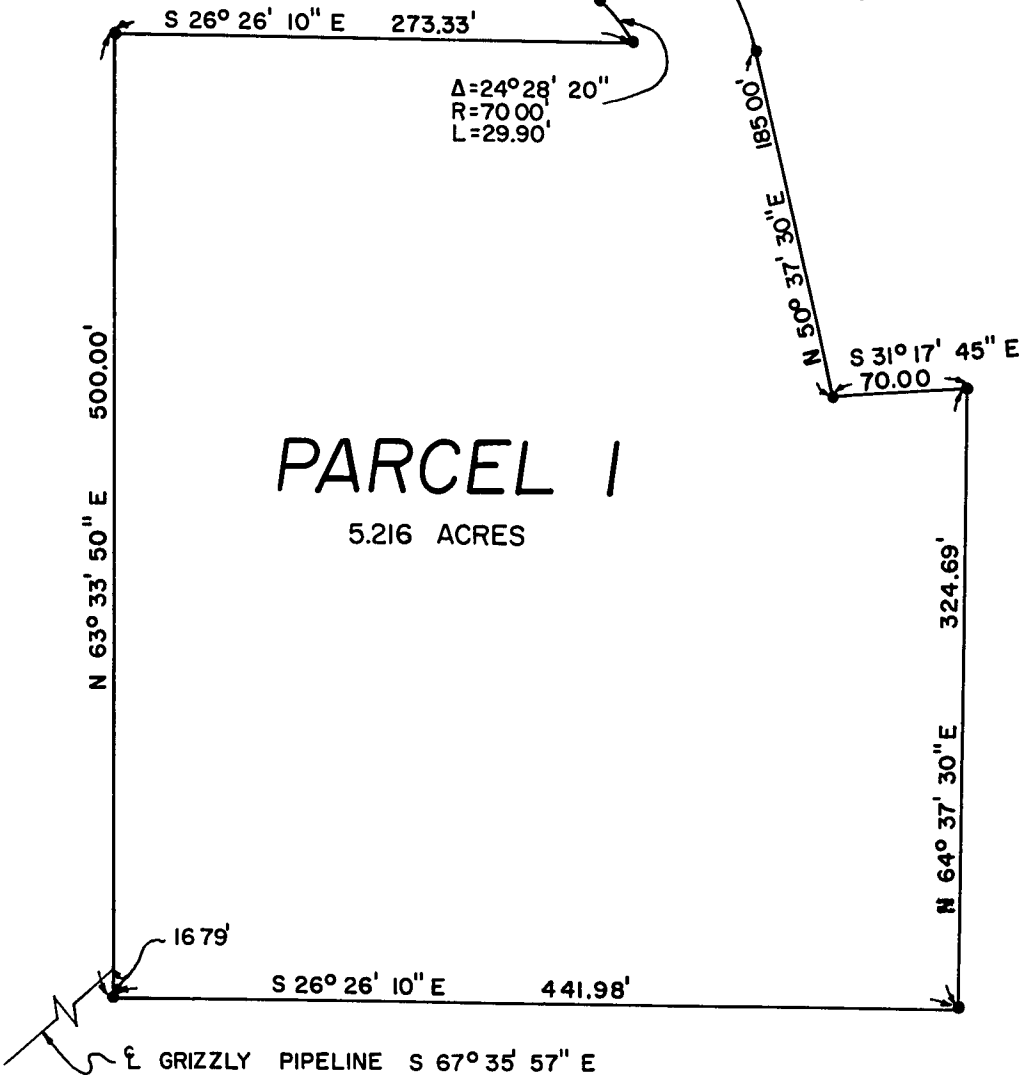
THIS MAP CORRECTLY REPRESENTS A SURVEY MADE BY ME  
OR UNDER MY DIRECTION IN CONFORMANCE WITH THE  
REQUIREMENTS OF THE LAND SURVEYORS ACT AT THE REQUEST  
OF THE PLUMAS COUNTY BOARD OF SUPERVISORS IN  
OCTOBER 1968. *Lawrence J. Brock*  
LAWRENCE J. BROCK, R.C.E. 13528  
COUNTY ROAD COMMISSIONER

FILED THIS 29<sup>th</sup> DAY OF Nov., 1968, AT 3:55 PM.  
IN BOOK 3 OF RECORD OF SURVEYS, AT PAGE 124  
AT THE REQUEST OF THE PLUMAS COUNTY BOARD OF SUPERVISORS  
FILE NO. 2666

No FEE *Debra Howard Stoneville*  
COUNTY RECORDER

THIS MAP HAS BEEN EXAMINED FOR CONFORMANCE WITH THE  
REQUIREMENTS OF THE LAND SURVEYORS ACT THIS 28<sup>th</sup> DAY  
OF November, 1968. *Darrell P. Payne*  
DARRELL P. PAYNE, R.C.E. 8596  
COUNTY ENGINEER

### PARCEL 1 5.216 ACRES



## RECORD OF SURVEY MAP

PORTIONS OF SECTION  
12, T.23N, R.13E, & SECTIONS  
6 & 7, T.23N., R.14E., M.D.B.&M.

PLUMAS COUNTY, CALIFORNIA

SCALE 1"=100' NOVEMBER 1968

SURVEYED AT THE REQUEST OF

THE PLUMAS COUNTY BOARD OF SUPERVISORS

- LEGEND
- SET 3/4" IP TAGGED RCE 7294
  - FND IP ON SUBDIVISION BOUNDARY
  - FND. SECTION CORNER AS DESCRIBED
  - FND. H&T SET BY DEPT WATER RES.
  - CALCULATED CORNER POSITION (NOTHING SET)
- ABBREVIATIONS
- RECORD
  - CALCULATED
  - MEASURED
  - DEPARTMENT OF WATER RESOURCES-DWR
  - REC
  - CALC
  - MEAS
  - DWR

OWNER: CAL-SIERRA TITLE CO.