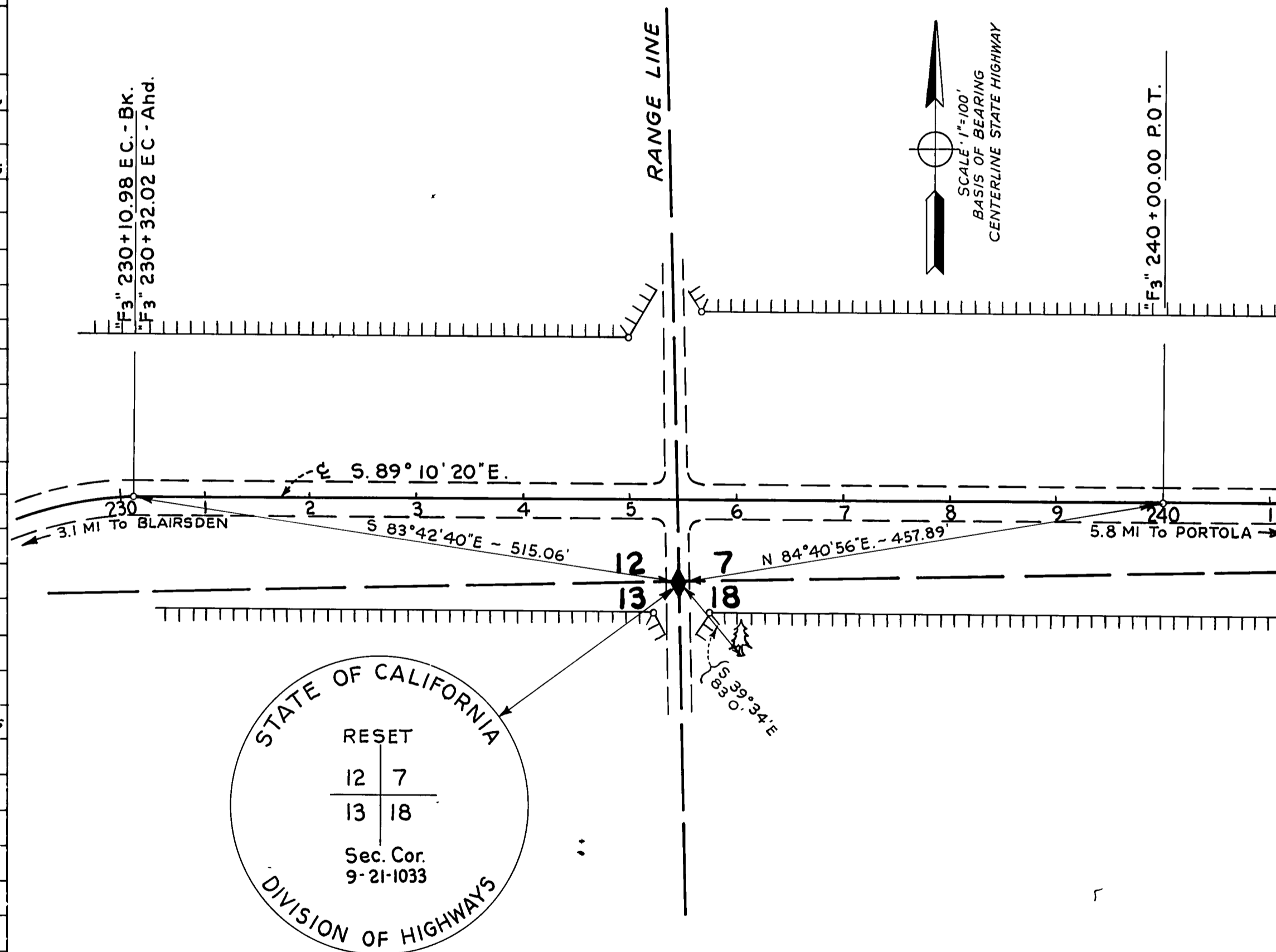


# SURVEY BY THE DIVISION OF HIGHWAYS TO PERPETUATE SECTION CORNER

## IN PLUMAS COUNTY T.22 N., R.12 E. & R.13 E., M.D.M. - SECTION CORNER COMMON TO SECTIONS 7, 12, 13 & 18

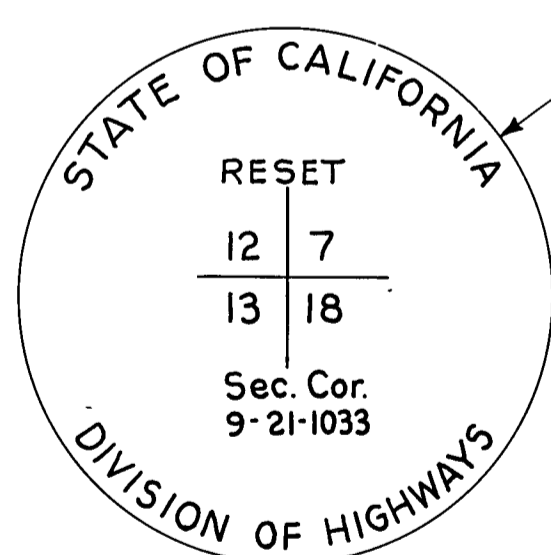
### G.L.O. NOTES

DATE	DECEMBER 13, 1882
MON.	A Pine Post, 48"x4"x4", set 12" in the ground, with a Stone Mound. Post marked: "T 22 N., R 13 E., S 7 on Northeast; S.12 on Northwest; T 22 N., R.12 E., S.13 on Southwest; and S.18 on Southeast Faces."
REF.	From which bears: A Pitch Pine, 23" diameter, N.36°W., 59 Lks., marked T.22 N., R.12 E., S.12, B.T. A Pitch Pine, 18" diameter, S 79°W., 80 Lks., marked T.22 N., R.12 E., S.13, B.T. A Pitch Pine, 10" diameter, S 40°E., 123 Lks. marked T.22 N., R.13 E., S 18, B.T. A Pitch Pine, 22" diameter, N.38°E., 106 Lks marked T.22 N., R.13 E., S 7, B.T.
DATE	MAY 9, 1956
FOUND	A Lath in Mound of Rock with original Bearing Trees, as follows: A Pitch Pine, 24" diameter, w/F.S Tag, which bears S 39°34'E., 83.0' distant. A Pitch Pine stump, 20" diameter, w/F.S Tag, which bears N.36°06'E., 71.0' distant. Also found trees marked w/F.S Tags which bear from Corner as follows: A Pitch Pine, 5" diameter, S 05°08'E, 16.5' distant. A Pitch Pine stump, 23" diameter, N.76°11'W., 38.0' distant A Pitch Pine, 8" diameter, N.82°50'E., 34.0' distant.



### AS PERPETUATED

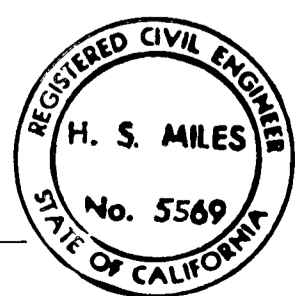
DATE	SEPTEMBER 29, 1961
MON.	BRASS PLATE SET IN CONCRETE IN CAST IRON PAVEMENT WELL WITH CAST IRON COVER.
REF.	FOUND ORIGINAL BEARING TREE W/F.S. TAG. A PITCH PINE, 24" DIAMETER, WHICH BEARS S. 39° 34' E., 83.0' DISTANT.  CORNER IS S. 83° 42' 40" E., 515.06' FROM HIGHWAY & STATION "F <sub>3</sub> " 230+10.98 E.C. - BK. F <sub>3</sub> " 230+32.02 E.C. - AHD. AND S 84° 40' 56" W., 457.89' FROM HIGHWAY & STATION "F <sub>3</sub> " 240+00.00 P.O.T.  BOTH REFERENCE POINTS MARKED BY BRASS PLATES SET IN CONCRETE IN CAST IRON PAVEMENT WELLS WITH CAST IRON COVERS, PLACED AT THE & OF THE ROADWAY.



PREPARED BY J.L. 3-2/68  
CHKD BY R.E. HALL-2/68

THIS MAP CORRECTLY REPRESENTS A SURVEY MADE BY ME OR UNDER MY DIRECTION IN CONFORMANCE WITH THE REQUIREMENTS OF THE LAND SURVEYORS' ACT AT THE REQUEST OF CALIFORNIA DIVISION OF HIGHWAYS IN FEBRUARY 1968

*H.S. Miles*  
H.S. MILES, R.E. 5569



THIS MAP HAS BEEN EXAMINED FOR CONFORMANCE WITH THE REQUIREMENTS OF THE LAND SURVEYORS' ACT THIS 14<sup>th</sup> DAY OF MARCH 1968

*Darrell P. Payne*  
Asst. COUNTY SURVEYOR

# 3308

FILED FOR RECORD THIS 14<sup>th</sup> DAY OF March 19 68 AT 2:10 P.M. IN BOOK 3 OF REFS. AT PAGE 110 AT THE REQUEST OF *Ida Drogen Gronwald* COUNTY RECORDER

*No Fee*