

SURVEYOR'S CERTIFICATE

THIS MAP CORRECTLY REPRESENTS A SURVEY MADE BY ME OR UNDER MY DIRECTION IN CONFORMANCE WITH THE REQUIREMENTS OF THE LAND SURVEYOR'S ACT AT THE REQUEST OF EDWARD SIEBER IN SEPTEMBER, 1967. THIS RECORD OF SURVEY IS EXCLUDED FROM THE SUBDIVISION MAP ACT BY SECTION 11535, ARTICLE 3, CHAPTER 2, OF THE BUSINESS AND PROFESSIONAL CODE.

Edward P. Norris
EDWARD P. NORRIS, L S 2846

RECORDER'S CERTIFICATE

FILED FOR RECORD THIS 13th DAY OF October, 1967,
AT 11:55A M. IN BOOK 3 OF RECORD OF SURVEYS AT PAGE 95
THE REQUEST OF WALTER B. GRIMES. RECORDING NO. 1798

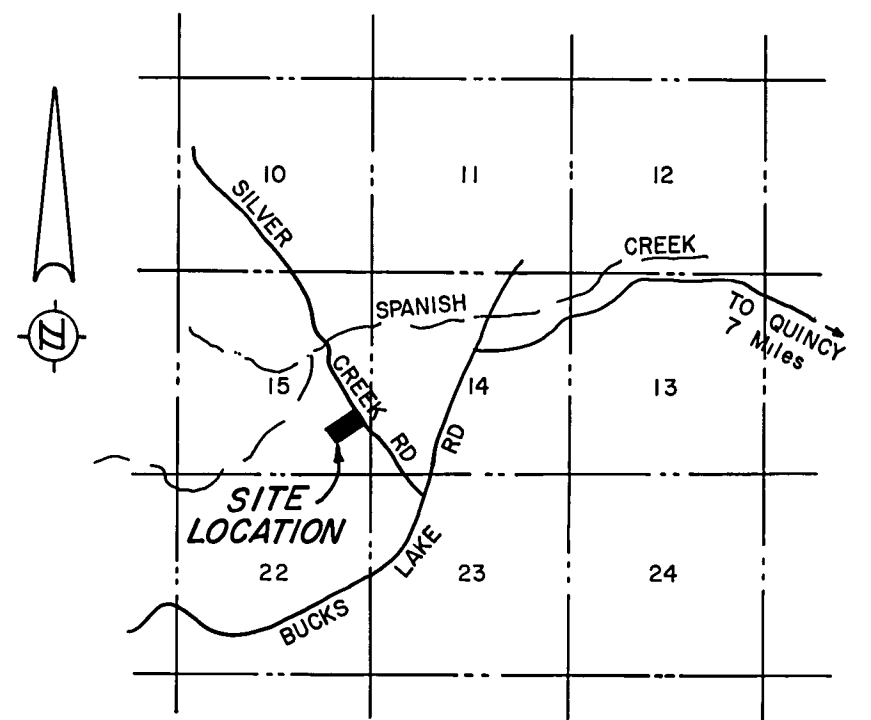
FEE 5⁰⁰

Ida Hogan Penwald
COUNTY RECORDER
BY _____
DEPUTY

COUNTY ENGINEER'S CERTIFICATE

THIS MAP HAS BEEN EXAMINED FOR CONFORMANCE WITH THE REQUIREMENTS OF THE LAND SURVEYOR'S ACT THIS 11th DAY OF OCTOBER, 1967.

Lawrence J. Brock
LAWRENCE J. BROCK, R.C.E. 13528



LOCATION MAP
SCALE: 1" = 1 MILE

NOTES

THE BASIS OF BEARING IS THE CENTERLINE OF SILVER CREEK ROAD GIVEN AS S 39° 38' 16" E ON THE MAP OF PINELEAF ESTATES ADDITION NO. ONE FILED APRIL 22, 1962, IN MAP BOOK 2 AT PAGES 61, 62, AND 63, RECORDING NO. 3659.

TOTAL ACREAGE 9.89 ACRES

LEGEND

FOUND 3/4" IRON PIPE MARKED R.C.E. 7294
COMPUTED CORNER LOCATION

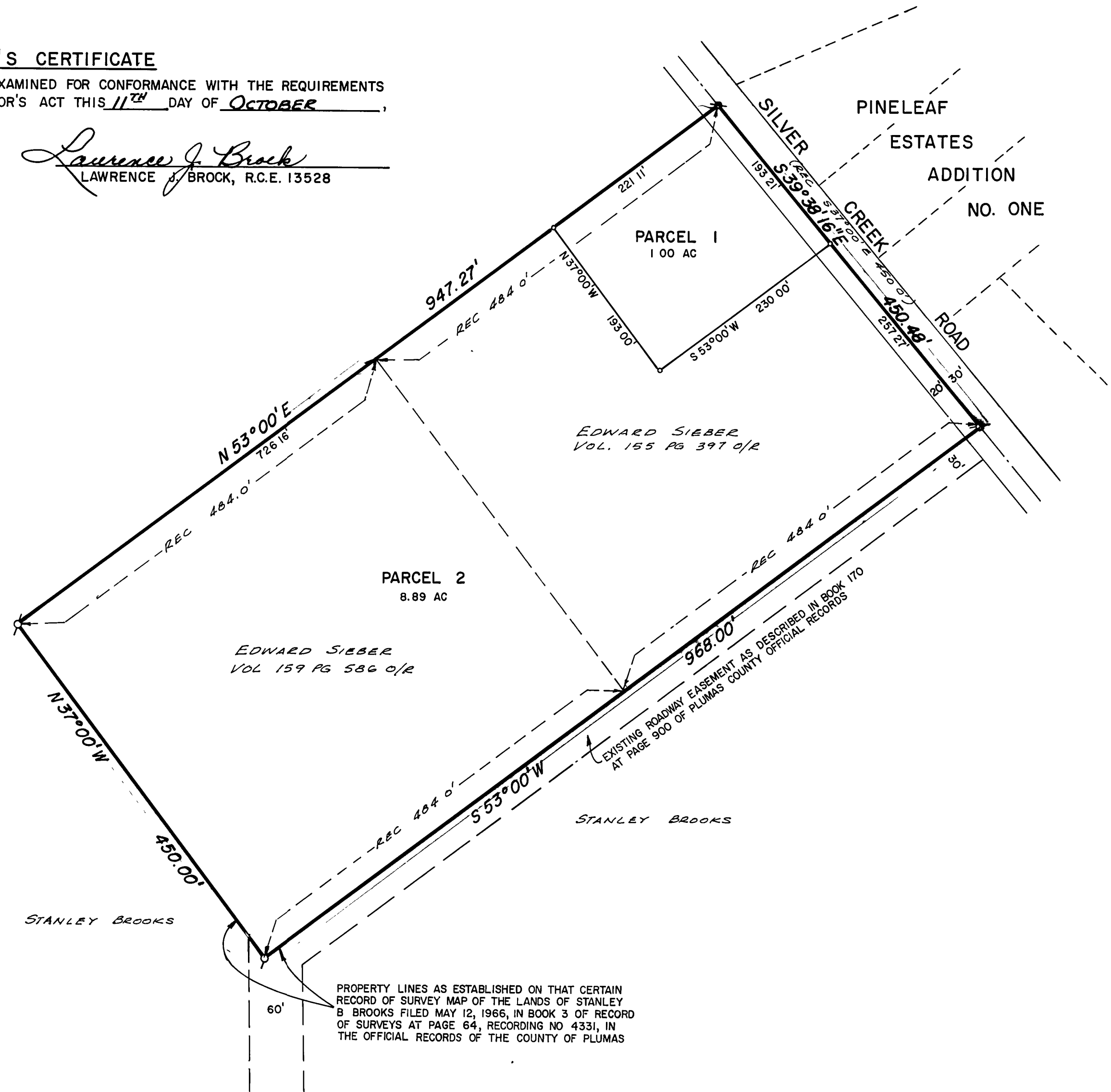
RECORD OF SURVEY MAP
A PORTION OF THE S.E. 1/4 OF
SECTION 15, T.24N., R.8E., M.D.B.&M.
PLUMAS COUNTY, CALIFORNIA

SURVEY OF THE LANDS OF
EDWARD SIEBER

SCALE: 1" = 100'

SEPTEMBER, 1967

G WALTER B **A**
RIMES ASSOC.
CIVIL ENGINEERS & LAND SURVEYORS
1356 MANGROVE AVENUE, CHICO, CALIFORNIA



PROPERTY LINES AS ESTABLISHED ON THAT CERTAIN RECORD OF SURVEY MAP OF THE LANDS OF STANLEY B. BROOKS FILED MAY 12, 1966, IN BOOK 3 OF RECORD OF SURVEYS AT PAGE 64, RECORDING NO. 4331, IN THE OFFICIAL RECORDS OF THE COUNTY OF PLUMAS