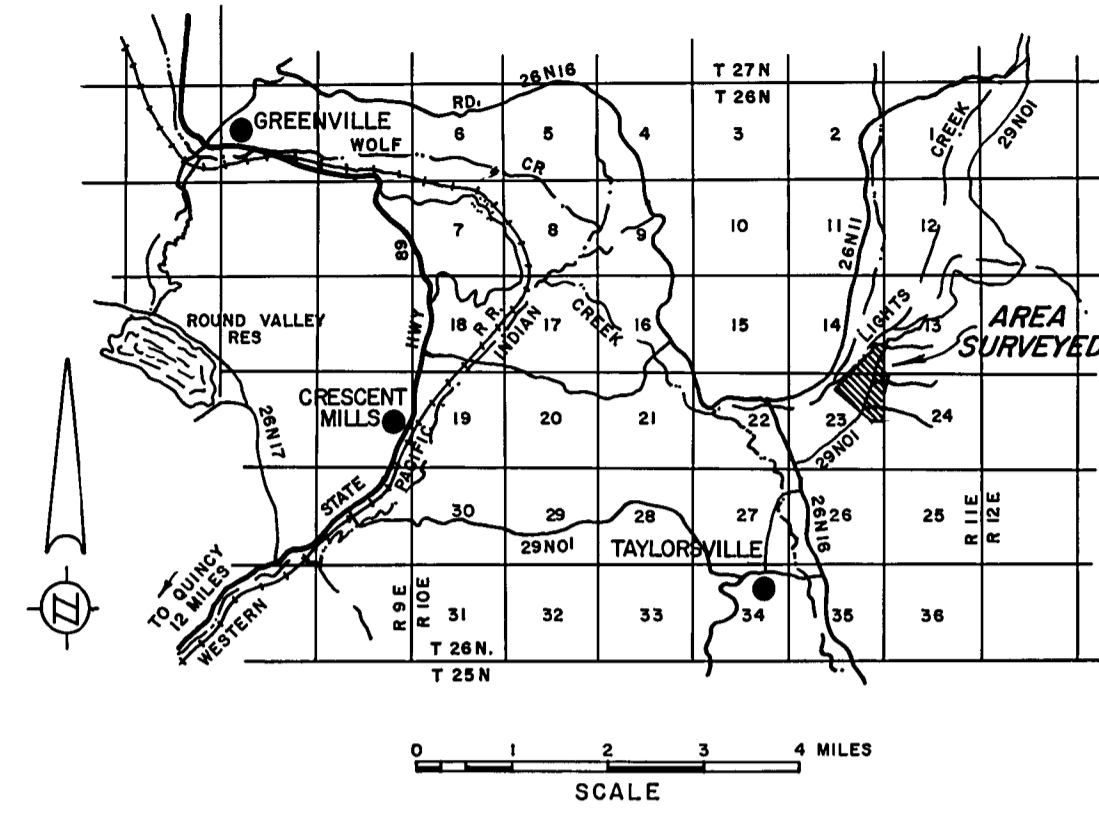
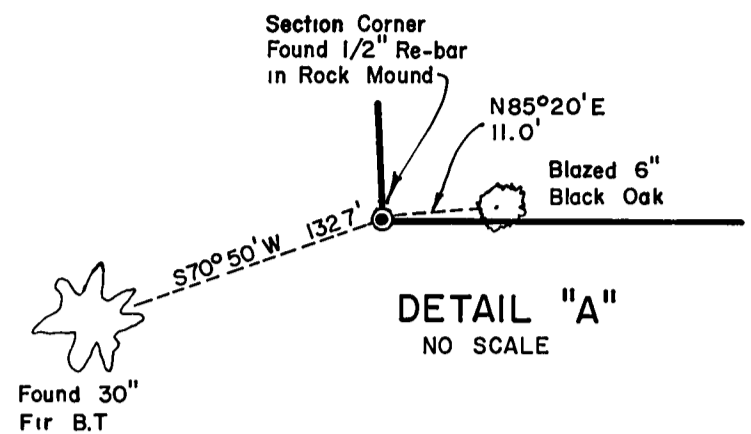
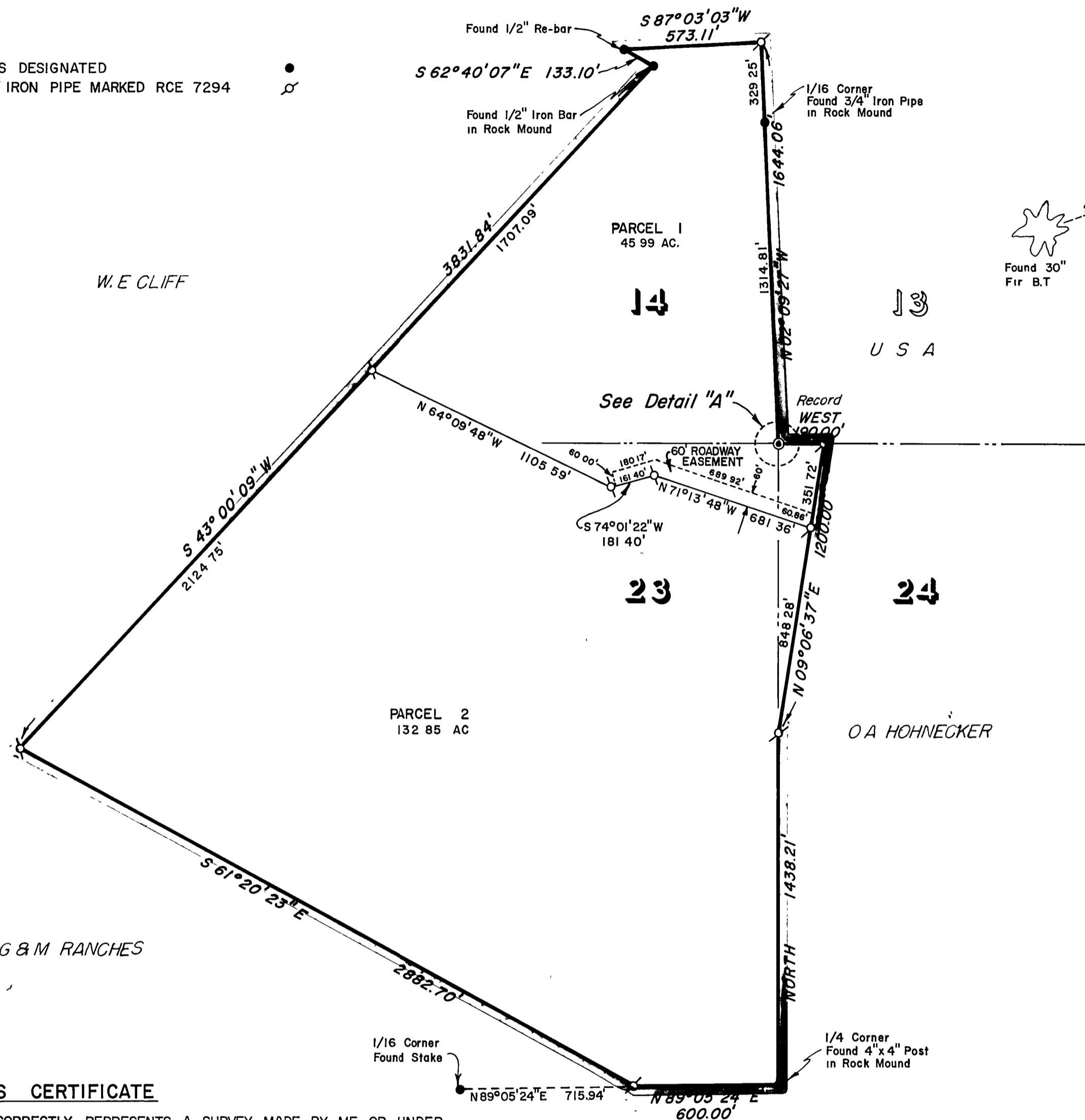


LEGEND

FOUND AS DESIGNATED
SET 3/4" IRON PIPE MARKED RCE 7294



LOCATION MAP

NOTES

THE BASIS OF BEARING IS THE EAST LINE OF SECTION 23, T.26N., R.10E., M.D.B.&M., GIVEN AS NORTH IN THE GOVERNMENT LAND OFFICE NOTES AND SWAMP AND OVERFLOW LAND SURVEY NO. 65 AT PG 47 BK. 1 OF PATENTS AS RECORDED IN THE OFFICE OF THE RECORDER, COUNTY OF PLUMAS, STATE OF CALIFORNIA.

THE COURSE SHOWN WEST 190.00' WAS RUN EAST 190.00' FROM THE SECTION CORNER WITH NO ATTEMPT BEING MADE TO PLACE IT ON THE SECTION LINE OR TO RELOCATE THE SECTION LINE.

SURVEYOR'S CERTIFICATE

THIS MAP CORRECTLY REPRESENTS A SURVEY MADE BY ME OR UNDER MY DIRECTION IN CONFORMANCE WITH THE REQUIREMENTS OF THE LAND SURVEYOR'S ACT AT THE REQUEST OF EDWARD GODAR IN JUNE, 1967 THIS RECORD OF SURVEY IS EXCLUDED FROM THE SUBDIVISION MAP ACT BY SECTION 11535, ARTICLE 3, CHAPTER 2, OF THE BUSINESS AND PROFESSIONAL CODE

Edward P. Norris
EDWARD P. NORRIS, L.S. 2846

COUNTY ENGINEER'S CERTIFICATE

THIS MAP HAS BEEN EXAMINED FOR CONFORMANCE WITH THE REQUIREMENTS OF THE LAND SURVEYOR'S ACT THIS 27th DAY OF Sept, 1967.

Lawrence J. Brock
LAWRENCE J. BROCK, R.C.E. 13528

RECORDER'S CERTIFICATE

FILED FOR RECORD THIS 28th DAY OF September, 1967, AT 1:30 P.M. IN BOOK 3 OF RECORD OF SURVEYS AT PAGE 94 AT THE REQUEST OF WALTER B GRIMES RECORDING NO. 1606

FEE 50c

Ida Wagon Grimes
COUNTY RECORDER
BY *A. Schoaler*
DEPUTY

RECORD OF SURVEY MAP
A PORTION OF SECTIONS 14, 23, & 24,
T.26 N., R.10 E., M.D.B. & M.
PLUMAS COUNTY, CALIFORNIA

SURVEY OF THE LANDS OF
EDWARD GODAR

SCALE: 1" = 400'

JUNE, 1967

G. WALTER B. GRIMES ASSOC.
CIVIL ENGINEERS & LAND SURVEYORS
1356 MANGROVE AVENUE, CHICO, CALIFORNIA