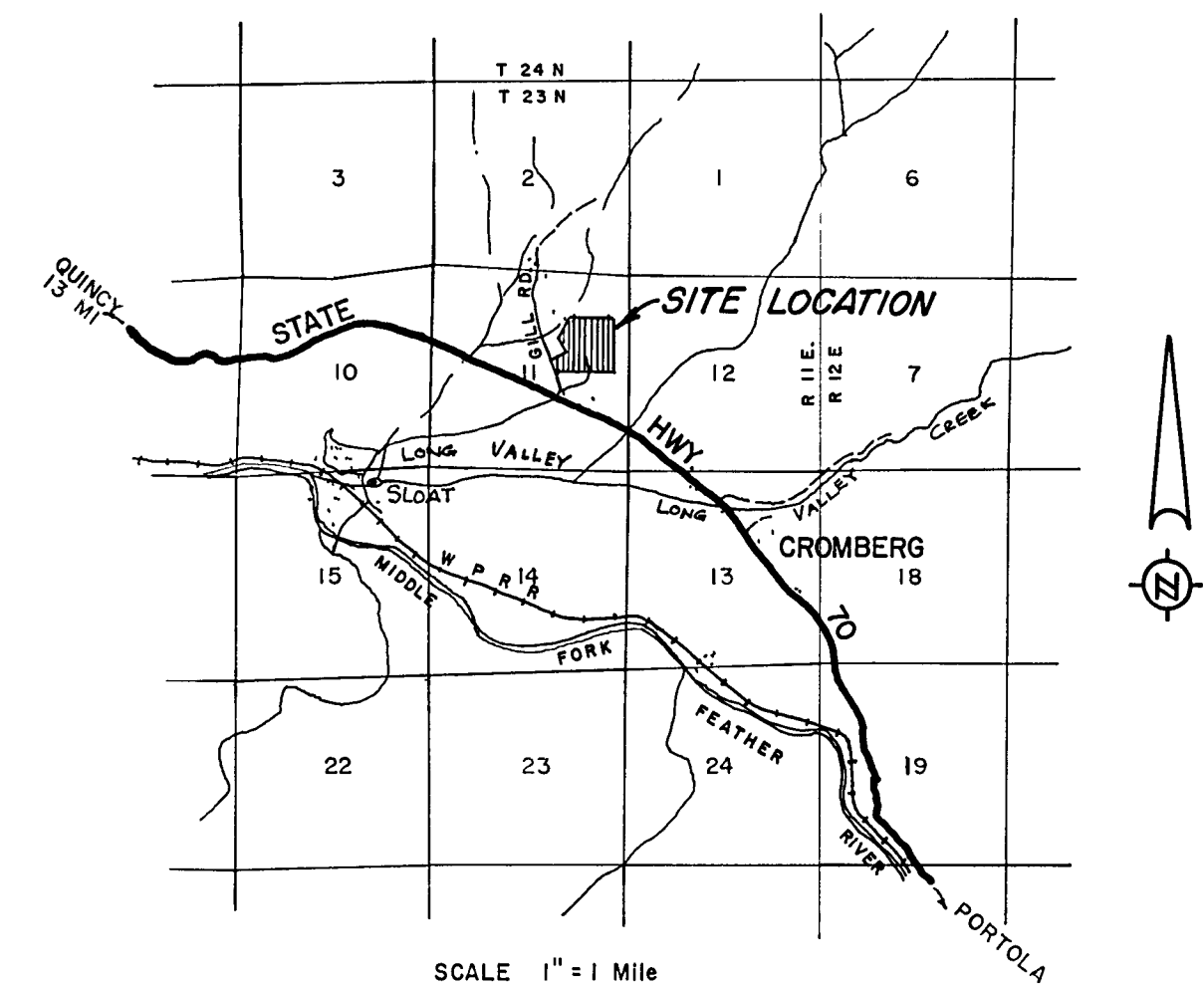
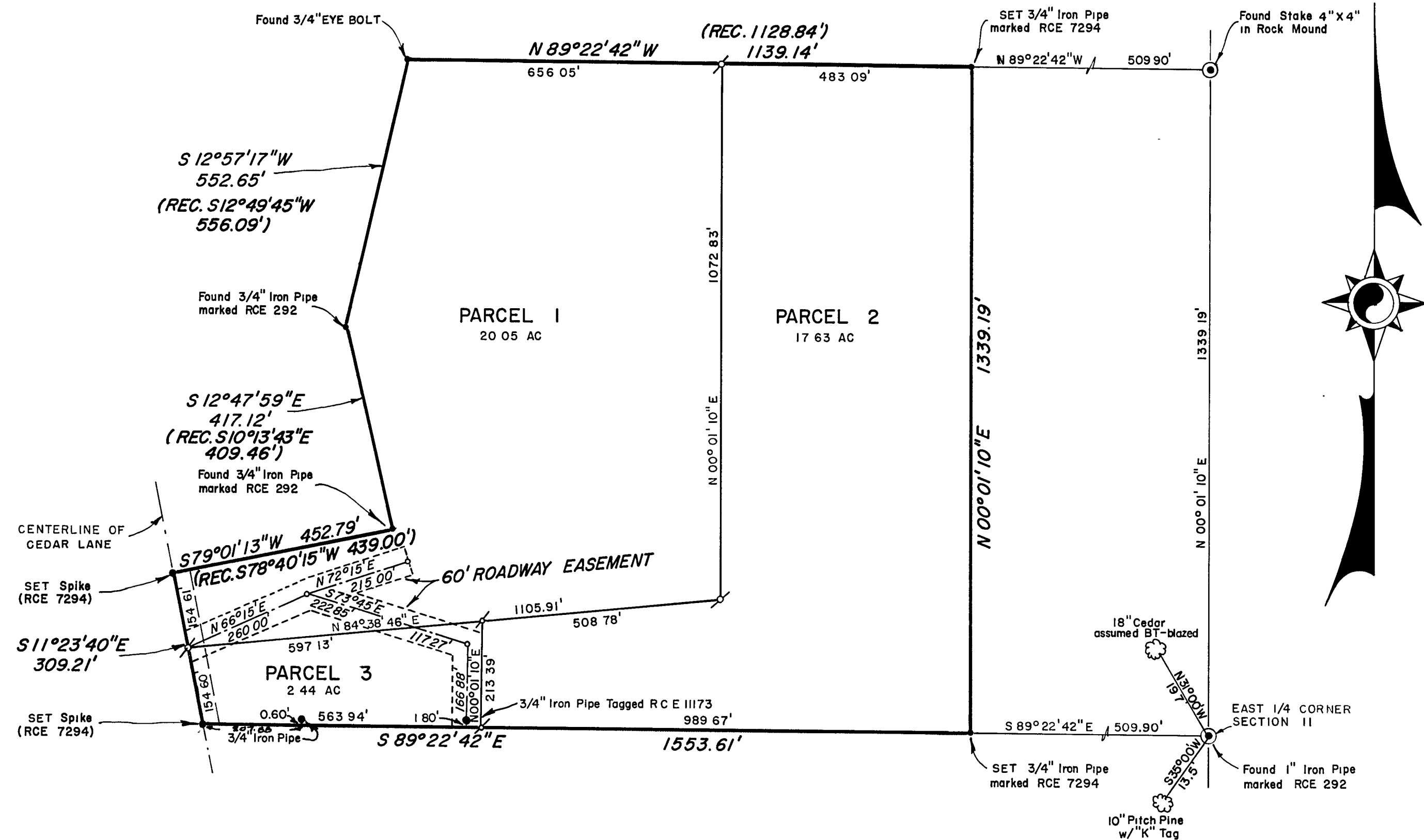


SECTION 11 T.23N. R.11E.



LOCATION MAP

NOTES

THE BASIS OF BEARING IS THE NORTH LINE OF PARCELS 1 & 2 GIVEN AS N89°22'42"W IN THAT CERTAIN DEED RECORDED JANUARY 15, 1962 IN BOOK 153 AT PAGE 317 IN THE PLUMAS COUNTY OFFICIAL RECORDS.

TOTAL ACREAGE 40.12 AC.

LEGEND

SET 3/4" IRON PIPE MARKED RCE 7294
 FOUND AS DESIGNATED
 COMPUTED CORNER LOCATION

RECORDER'S CERTIFICATE

FILED FOR RECORD THIS 25th DAY OF August, 1967, AT 10:00 AM IN BOOK 3 OF RECORDS OF SURVEY Pg 92 AT THE REQUEST OF WALTER B. GRIMES, RECORDING NO.

FEE \$5.00

Lawrence J. Brock
 COUNTY RECORDER

BY *Edward P. Norris*
 DEPUTY

SURVEYOR'S CERTIFICATE

THIS MAP CORRECTLY REPRESENTS A SURVEY MADE BY ME OR UNDER MY DIRECTION IN CONFORMANCE WITH THE REQUIREMENTS OF THE LAND SURVEYOR'S ACT AT THE REQUEST OF A.A. BUTLER AND S.P. TAYLOR IN MAY, 1967. THIS RECORD OF SURVEY IS EXCLUDED FROM THE SUBDIVISION MAP ACT BY SECTION 11535, ARTICLE 3, CHAPTER 2, OF THE BUSINESS AND PROFESSIONAL CODE.

Edward P. Norris
 EDWARD P. NORRIS L.S. 2846

COUNTY ENGINEER'S CERTIFICATE

THIS MAP HAS BEEN EXAMINED FOR CONFORMANCE WITH THE REQUIREMENTS OF THE LAND SURVEYOR'S ACT THIS 25th DAY OF August, 1967.

Lawrence J. Brock
 LAWRENCE J. BROCK R.C.E. 13528

RECORD OF SURVEY MAP

A PORTION OF THE NORTHEAST 1/4 OF SECTION 11 T.23N., R.11E., M.D.B. & M.

PLUMAS COUNTY, CALIFORNIA

MAP OF THE LANDS OF

A. A. BUTLER
 S. P. TAYLOR

SCALE 1" = 200'

MAY 1967

WALTER B. GRIMES ASSOC.
 CIVIL ENGINEERS & LAND SURVEYORS
 1356 MANGROVE AVENUE, CHICO, CALIFORNIA