

LEGEND

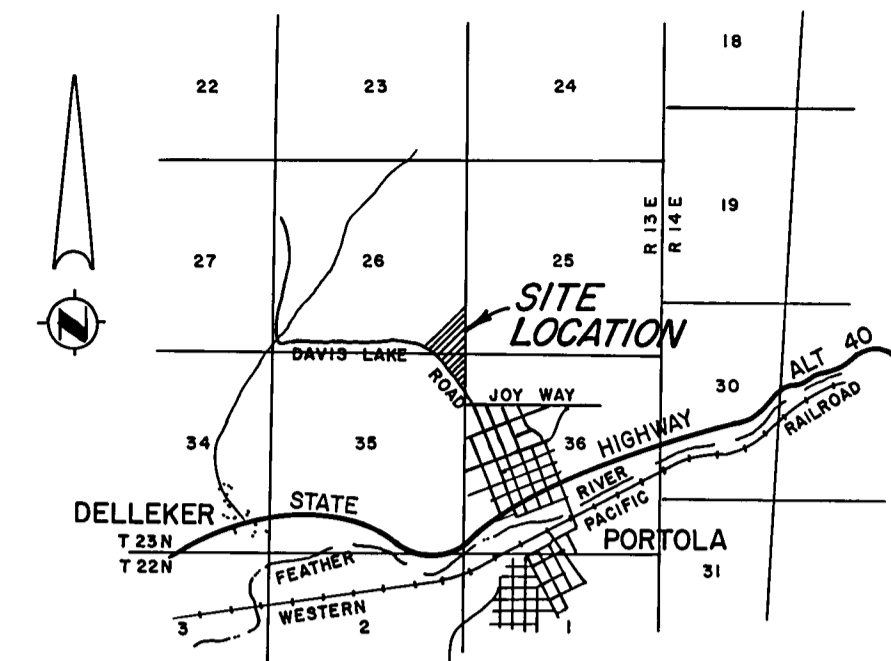
SET 3/4" IRON PIPE STAMPED RCE 7294
FOUND AS DESIGNATED
COMPUTED CORNER LOCATION



SURVEYOR'S CERTIFICATE

THIS MAP CORRECTLY REPRESENTS A SURVEY MADE BY ME OR UNDER MY DIRECTION IN CONFORMANCE WITH THE REQUIREMENTS OF THE LAND SURVEYOR'S ACT AT THE REQUEST OF ALBION J. JOY IN JUNE, 1967. THIS RECORD OF SURVEY IS EXCLUDED FROM THE SUBDIVISION MAP ACT BY SECTION 11535, ARTICLE 3, CHAPTER 2, OF THE BUSINESS AND PROFESSIONAL CODE.

Edward P. Norris
EDWARD P. NORRIS, L.S. 2846



LOCATION MAP
SCALE 1" = 1 MILE

COUNTY ENGINEER'S CERTIFICATE

THIS MAP HAS BEEN EXAMINED FOR CONFORMANCE WITH THE REQUIREMENTS OF THE LAND SURVEYOR'S ACT THIS 7TH DAY OF August, 1967.

Lawrence J. Brock
LAWRENCE J. BROCK, R.C.E. 13528

RECORDER'S CERTIFICATE

FILED FOR RECORD THIS 8TH DAY OF August, 1967, AT 8:41 A.M. IN BOOK 3 OF RECORD OF SURVEYS AT PAGE 91 AT THE REQUEST OF WALTER B. GRIMES. RECORDING NO. 482

FEE 5⁰⁰

Walter B. Grimes
COUNTY RECORDER

BY _____
DEPUTY

RECORD OF SURVEY MAP

A PORTION OF THE SOUTH HALF OF SECTION 26
& A PORTION OF THE NORTH HALF OF SECTION 35,
T. 23 N., R. 13 E., M.D.B. & M.
PLUMAS COUNTY, CALIFORNIA

SURVEY OF THE LANDS OF
ALBION J. JOY

SCALE: 1" = 200'

JUNE, 1967

G. WALTER B. GRIMES ASSOC.
CIVIL ENGINEERS & LAND SURVEYORS
1356 MANGROVE AVENUE, CHICO, CALIFORNIA

NOTES

THE BASIS OF BEARING IS THE WEST LINE OF THE SW 1/4 OF SECTION 25, T. 23 N., R. 13 E., M.D.B. & M., GIVEN AS N00°05'11"E ON THAT CERTAIN RECORD OF SURVEY MAP FILED MAY 31, 1967, IN BOOK 3 OF RECORD OF SURVEYS AT PAGE 88, RECORDING NO. 3890, IN THE OFFICIAL RECORDS OF THE COUNTY OF PLUMAS, STATE OF CALIFORNIA.

