

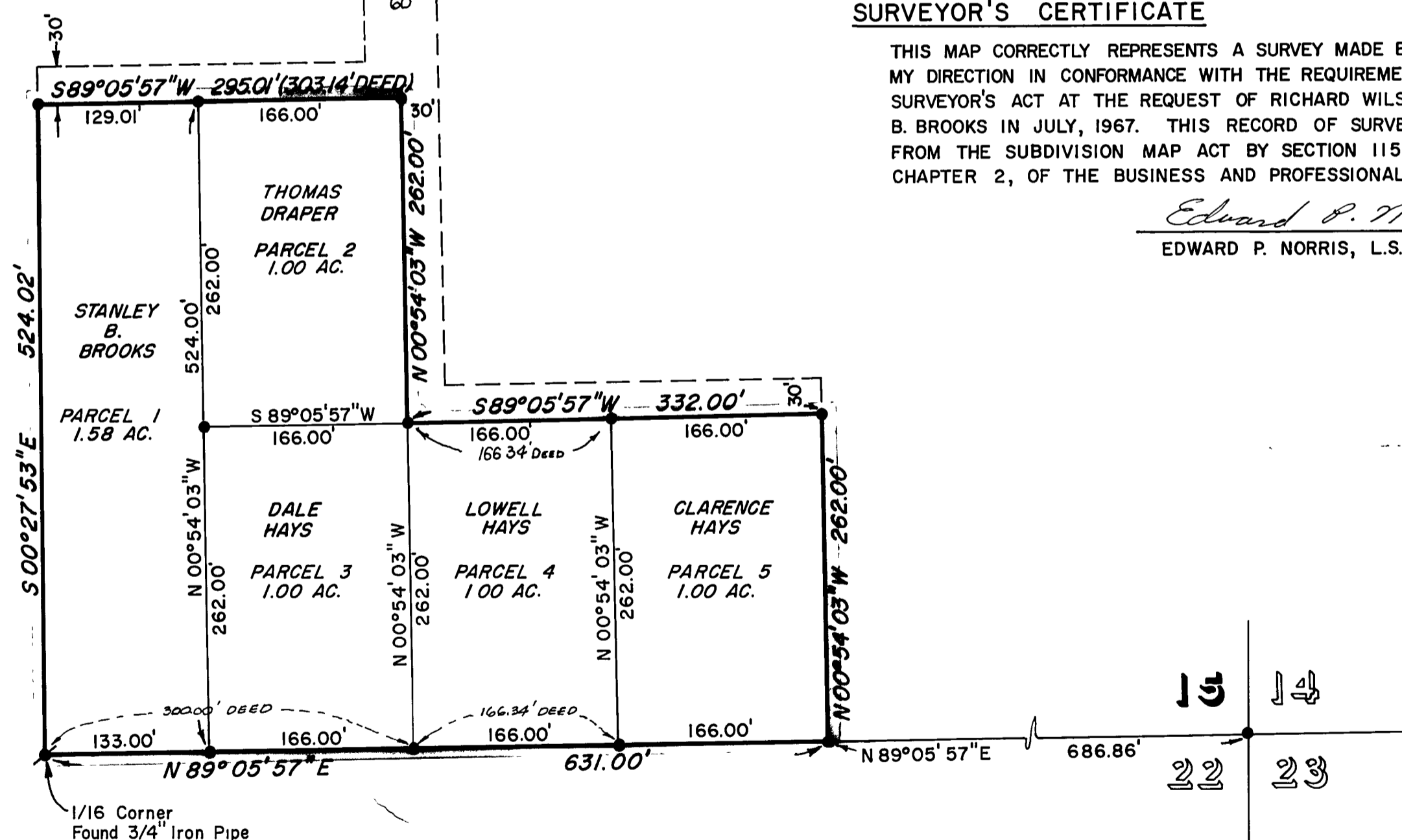
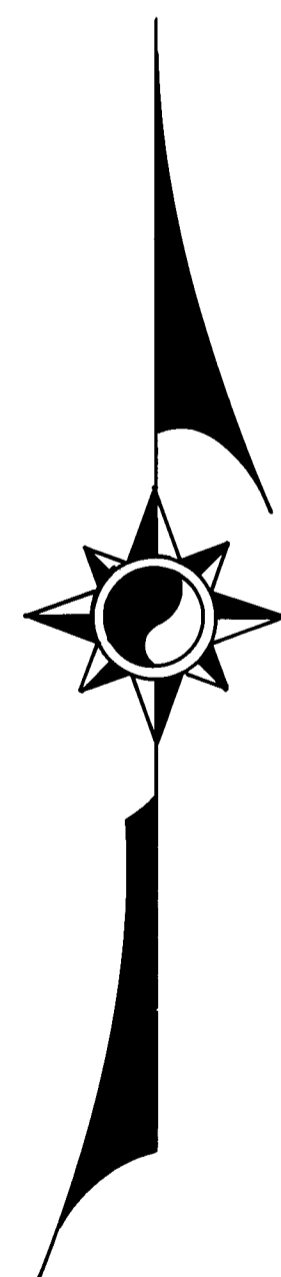
NOTES

THE BASIS OF BEARING IS THE SOUTH LINE OF THE S.E. 1/4 OF THE S.E. 1/4 OF SECTION 15, T.24N., R.8E., M.D.B.&M., GIVEN AS N 89°05'57"E ON THAT CERTAIN RECORD OF SURVEY MAP OF THE LANDS OF STANLEY B. BROOKS FILED MAY 12, 1966, IN BOOK 3 OF RECORD OF SURVEYS AT PAGE 64, RECORDING NO 4331, IN THE OFFICIAL RECORDS OF THE COUNTY OF PLUMAS, STATE OF CALIFORNIA.

TOTAL ACREAGE 5.58 AC.

LEGEND

FOUND 3/4" IRON PIPE MARKED RCE 7294

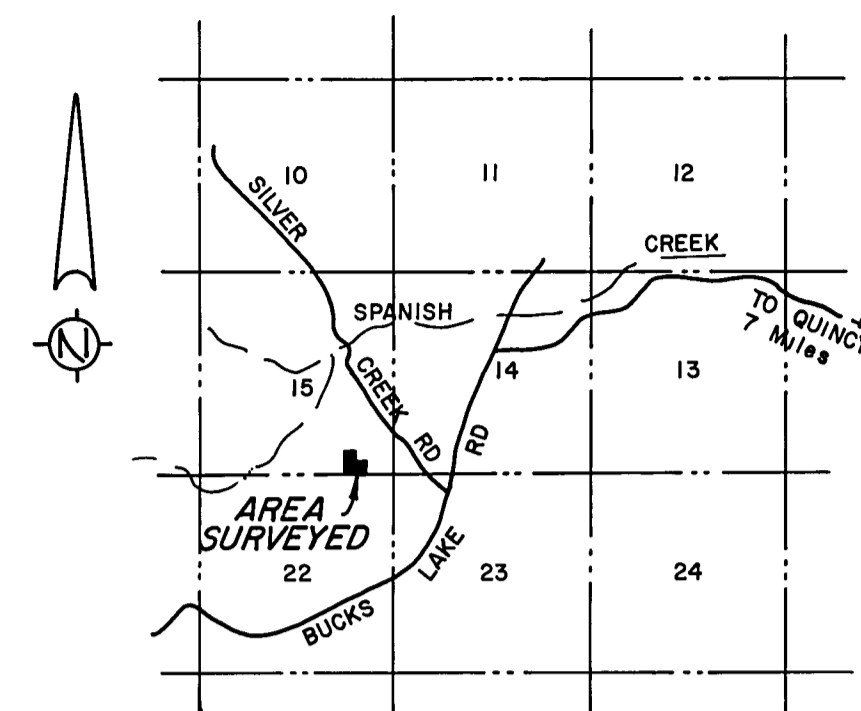


Existing Roadway Easement as Described in Book 170 of Official Records at Page 900, in Plumas County Records

SURVEYOR'S CERTIFICATE

THIS MAP CORRECTLY REPRESENTS A SURVEY MADE BY ME OR UNDER MY DIRECTION IN CONFORMANCE WITH THE REQUIREMENTS OF THE LAND SURVEYOR'S ACT AT THE REQUEST OF RICHARD WILSON AND STANLEY B. BROOKS IN JULY, 1967. THIS RECORD OF SURVEY IS EXCLUDED FROM THE SUBDIVISION MAP ACT BY SECTION 11535, ARTICLE 3, CHAPTER 2, OF THE BUSINESS AND PROFESSIONAL CODE.

Edward P. Norris
EDWARD P. NORRIS, L.S. 2846



LOCATION MAP

SCALE 1" = 1 Mile

COUNTY ENGINEER'S CERTIFICATE

THIS MAP HAS BEEN EXAMINED FOR CONFORMANCE WITH THE REQUIREMENTS OF THE LAND SURVEYOR'S ACT THIS 7TH DAY OF August, 1967.

Lawrence J. Brock
LAWRENCE J. BROCK, R.C.E. 13528

RECORDER'S CERTIFICATE

FILED FOR RECORD THIS 8TH DAY OF August, 1967, AT 8:40 A.M. IN BOOK 3 OF RECORD OF SURVEYS AT PAGE 90 AT THE REQUEST OF WALTER B. GRIMES. RECORDING NO. 481.

FEE 5.00

Ida Logan Grunwald
COUNTY RECORDER

BY _____
DEPUTY

RECORD OF SURVEY MAP A PORTION OF THE S.E. 1/4 OF SECTION 15, T.24N., R.8E., M.D.B.&M. PLUMAS COUNTY, CALIFORNIA

SURVEY OF THE LANDS OF
STANLEY B. BROOKS, DALE HAYS,
LOWELL HAYS, CLARENCE HAYS &
THOMAS DRAPER

SCALE 1" = 100'

JULY, 1967

G WALTER B. **A**
RIMES ASSOC.
CIVIL ENGINEERS & LAND SURVEYORS
1356 MANGROVE AVENUE, CHICO, CALIFORNIA