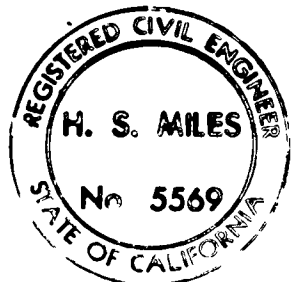
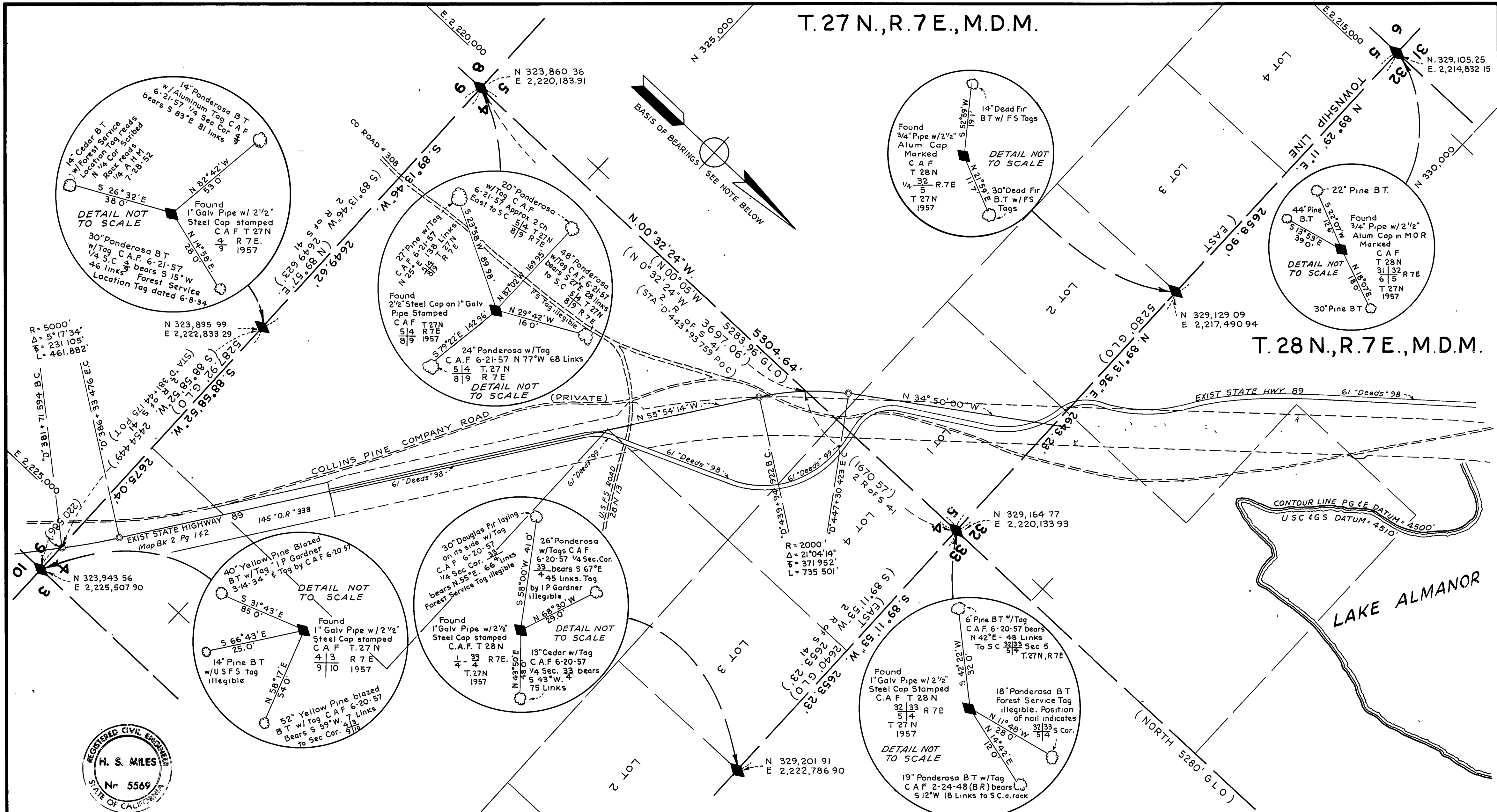


T. 27 N., R. 7 E., M. D. M.

T. 28 N., R. 7 E., M. D. M.



THIS MAP CORRECTLY REPRESENTS A SURVEY MADE BY ME OR UNDER MY DIRECTION IN CONFORMANCE WITH THE REQUIREMENTS OF THE LAND SURVEYOR'S ACT AT THE REQUEST OF CALIFORNIA DIVISION OF HIGHWAYS IN 1958, 1960, & 1963

H. S. Miles
H. S. MILES, R. E. 5569

THIS MAP HAS BEEN EXAMINED FOR CONFORMANCE WITH THE REQUIREMENTS OF THE LAND SURVEYOR'S ACT THIS 17th DAY OF MAY 1967

Laurence Brock
COUNTY SURVEYOR

3771 FILED FOR RECORD THIS 17th DAY OF May 1967 AT 10:30 AM IN BOOK 83 OF R. E. S. AT PAGE 85, AT THE REQUEST OF *Laurence Brock* Mr. Logan Gronvold COUNTY RECORDER

LEGEND

- ◆ FOUND MONUMENT AS INDICATED
- ◇ UNCONFIRMED CORNERS
- ⊙ Monument as shown on Map rec. in Book 2 of Record of Surveys Page 41

NOTE:
DISTANCES AND BEARINGS ARE BASED ON CALIFORNIA COORDINATE SYSTEM, ZONE 1. DISTANCES SHOWN ARE GRID DISTANCES. MULTIPLY BY 1.0002675 TO OBTAIN GROUND LEVEL DISTANCES. BEARINGS SHOWN ARE ESTABLISHED FROM U.S.C. & G.S. Δ STATIONS:
 Δ ALMANOR TRI STA. N. 314,252.510 E. 2,258,790.610
 Δ CHESTER AIRPORT TRI STA. N. 348,414.470 E. 2,212,062.330
 (EXCEPTION - DISTANCES & BEARINGS SHOWN IN PARENTHESES ARE FROM RECORD AS INDICATED)

RECORD OF SURVEY
FOR
STATE HIGHWAY PURPOSES
(SHOWING EXISTING MONUMENTS AS FOUND)

IN SEC. 3, 4, 5, 6, 8, 9 & 10 T. 27 N., R. 7 E., M. D. M. AND 13, 14, 23, 24, 25 & 36 T. 28 N., R. 7 E., M. D. M. AND 18, 19, 20, 29, 30, 31, 32 & 33 T. 28 N., R. 7 E., M. D. M.

PLUMAS COUNTY, CALIFORNIA

SCALE: 1" = 500' SHEET 1 OF 3