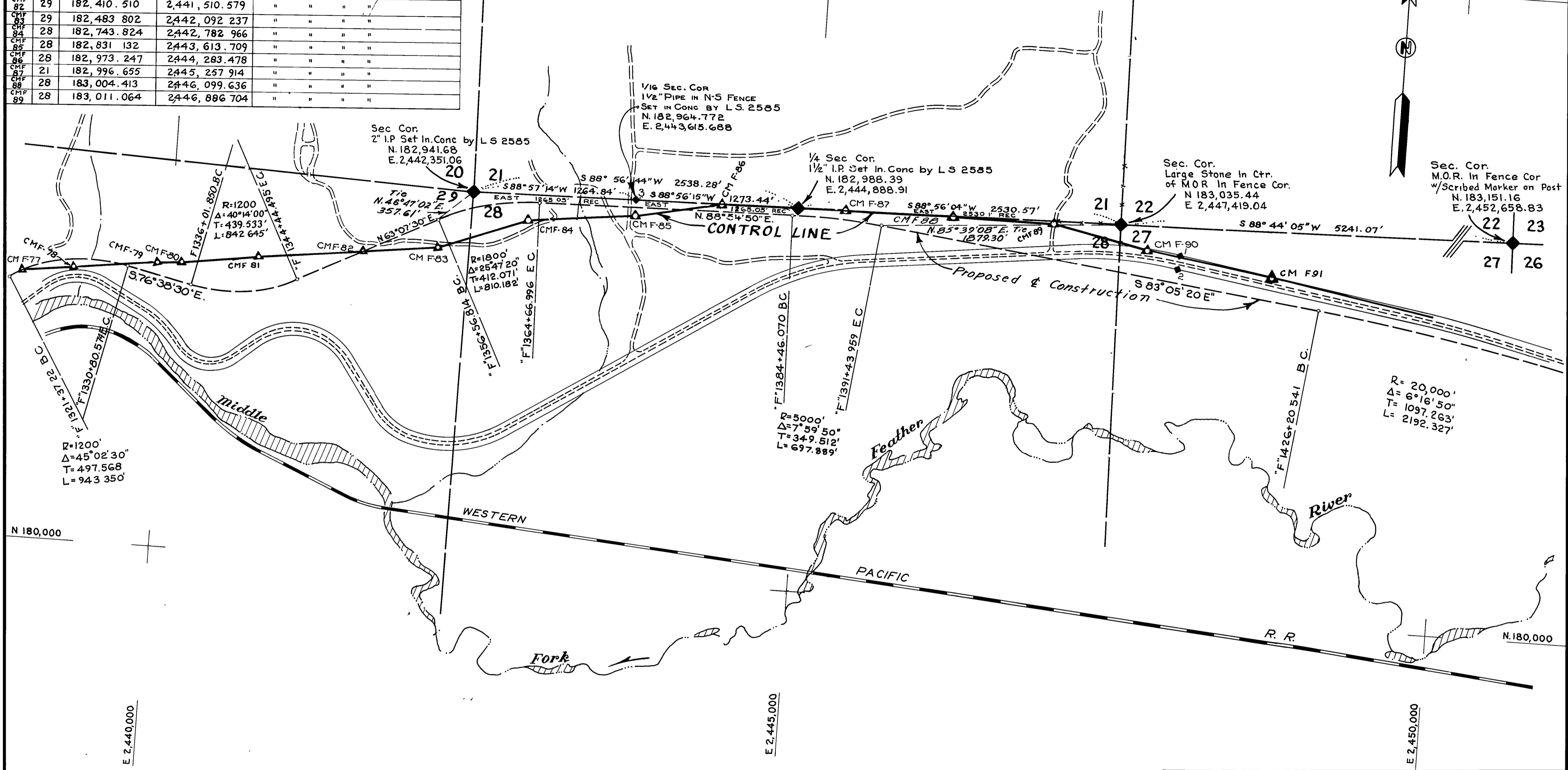


PT NO	SEC NO	COORDINATES		DESCRIPTION
		N	E	
1	27	182,833.579	2,447,888.438	Fd. 6"x6" Conc. R/W Mon
2	27	182,735.377	2,447,871.805	" " " " " "
CMF 77	29	182,078.009	2,438,876.515	Set T-Bar in Conc
CMF 78	29	182,133.386	2,439,263.869	" " " " " "
CMF 79	29	182,209.472	2,439,910.854	" " " " " "
CMF 80	29	182,226.217	2,440,105.552	" " " " " "
CMF 81	29	182,310.806	2,440,699.120	" " " " " "
CMF 82	29	182,410.510	2,441,510.579	" " " " " "
CMF 83	29	182,483.802	2,442,092.237	" " " " " "
CMF 84	28	182,743.824	2,442,782.966	" " " " " "
CMF 85	28	182,831.132	2,443,613.709	" " " " " "
CMF 86	28	182,973.247	2,444,283.478	" " " " " "
CMF 87	21	182,996.655	2,445,257.914	" " " " " "
CMF 88	28	183,004.413	2,446,099.636	" " " " " "
CMF 89	28	183,011.064	2,446,886.704	" " " " " "

PT NO	SEC NO	COORDINATES		DESCRIPTION
		N	E	
CMF 90	27	182,859.772	2,447,626.403	Set T-Bar in Conc.
CMF 91	27	182,701.429	2,448,612.212	" " " " " "

T. 23 N., R. 14 E., M. D. M.



THIS MAP HAS BEEN EXAMINED FOR CONFORMANCE WITH THE REQUIREMENTS OF THE LAND SURVEYORS' ACT THIS 14TH DAY OF APRIL, 1966

James H. Flanagan
COUNTY SURVEYOR

THIS MAP CORRECTLY REPRESENTS A SURVEY MADE BY ME OR UNDER MY DIRECTION IN CONFORMANCE WITH THE REQUIREMENTS OF THE LAND SURVEYORS' ACT AT THE REQUEST OF CALIFORNIA DIVISION OF HIGHWAYS IN

H S Miles
H S Miles, RCE 5569

- LEGEND**
- ◆ FOUND SECTION CORNERS
 - ◻ UNCONFIRMED CORNER
 - ▲ CONTROL MONUMENT ESTABLISHED BY STATE OF CALIFORNIA FOR PURPOSES OF THIS SURVEY. T-BAR W/CAP SET IN CONC OR BRASS CAP SET IN ROCK

ALL BEARINGS AND DISTANCES ARE GRID, BASED ON CALIF COORDINATE SYSTEM, ZONE 1, UNLESS OTHERWISE NOTED. MULTIPLY GRID DISTANCES BY 1.0001863 TO OBTAIN GROUND LEVEL DISTANCES

COORDINATES ESTABLISHED FROM U.S.C. & G.S. Δ STAS. "SMITH", "BECK" & "HAWLEY" (Zone 1)

4008

FILED FOR RECORD THIS 14TH DAY OF APRIL, 1966 AT 2:16 P.M. IN BOOK 3 OF R.S. AT PAGE 62 AT THE REQUEST OF *Division of State Highways*
Wm. Hagan
COUNTY RECORDER

710 Fee

SURVEY OF A CONTROL LINE FOR STATE HIGHWAY PURPOSES
IN SEC. 21, 22, 27, 28 & 29
T. 23 N., R. 14 E., M. D. M.
PLUMAS COUNTY, CALIFORNIA
SCALE: 1" = 500'