

NOTES •
THE BASIS OF BEARING IS THE EAST LINE OF SECTION 10 GIVEN AS SOUTH ON THE GOVERNMENT LAND OFFICE NOTES.

THE SECTIONAL DIVISION LINES AS SHOWN ON THIS MAP ARE BASED ON THE FOLLOWING FOUND CORNERS: SOUTH 1/4 CORNER, THE SOUTHEAST CORNER, THE EAST 1/4 CORNER, THE NORTHEAST CORNER, THE NORTH 1/4 CORNER AND THE CENTER OF SECTION 10, T.22 N., R.13 E.

LEGEND •
SET 3/4" IRON PIPE MARKED R.C.E. 7294

SURVEYOR'S CERTIFICATE •
This map correctly represents a survey made by me or under my direction in conformance with the requirements of the Land Surveyors Act at the request of Douglas M. Joy in December, 1964. This record of survey is not a subdivision as defined in Section 11535, Article 3, Chapter 2 of the Business and Professions Code.

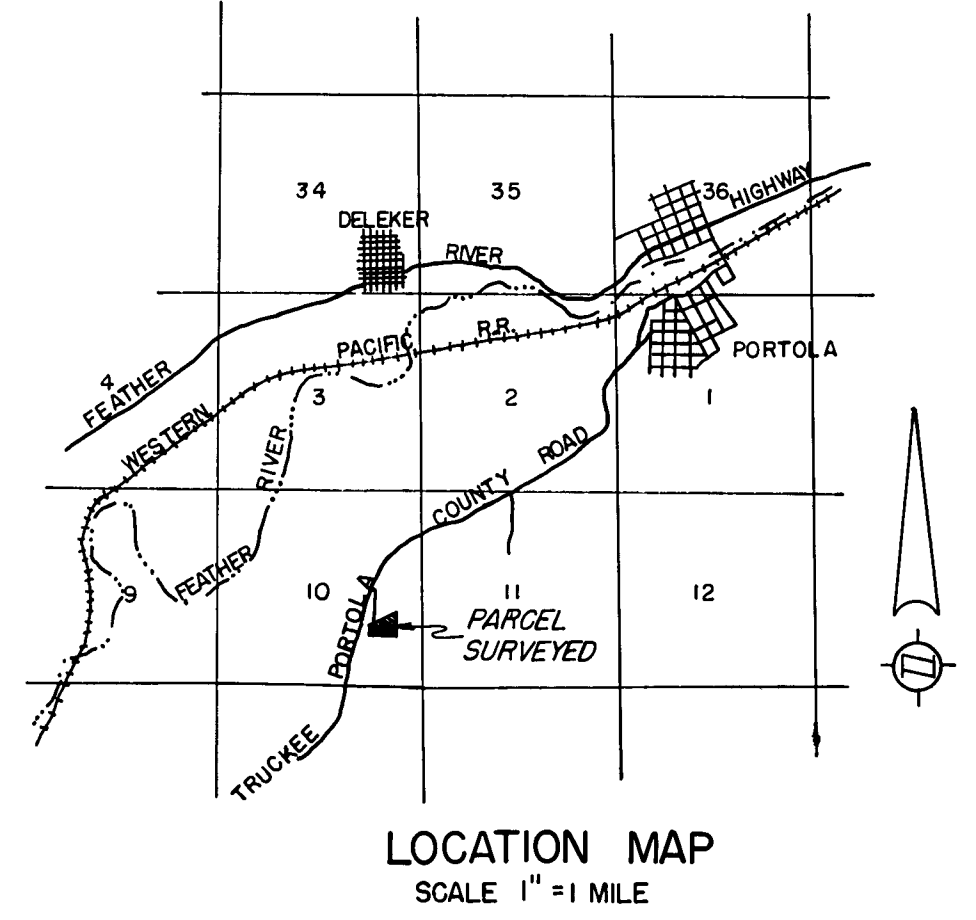
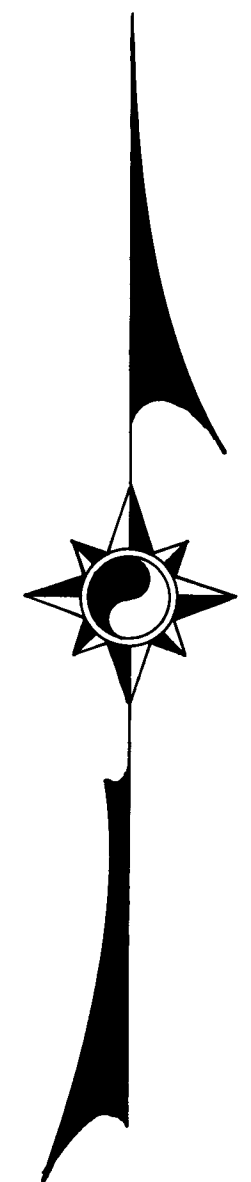
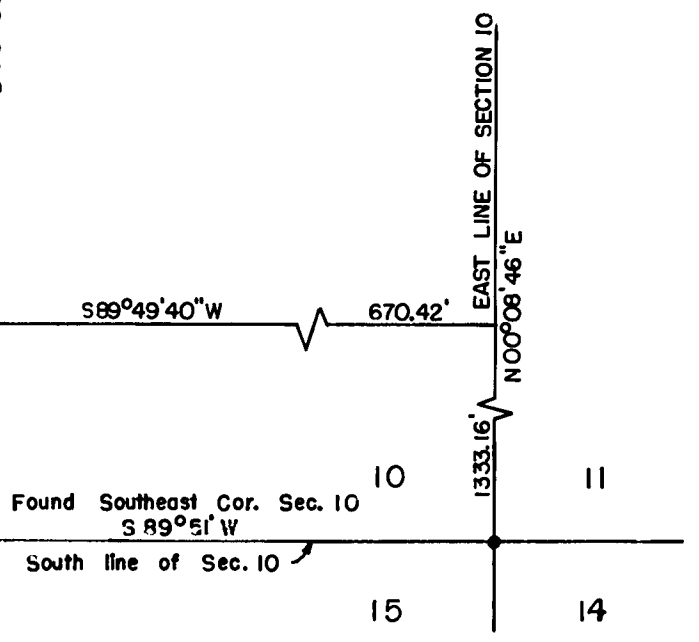
Edward P. Norris
EDWARD P. NORRIS L.S. 2846

COUNTY ENGINEER'S CERTIFICATE •
This map has been examined for conformance with the requirements of the Land Surveyors Act this 26th day of July, 1965.

James F. Flanagan
JAMES F. FLANAGAN RE 292
County Engineer

RECORDER'S CERTIFICATE •
Filed for record this 26th day of July, 1965, at 3:48 P.M. in Book 3 of Maps at page 32 at the request of Walter B. Grimes Recording No. 382.

James Nagan
County Recorder
Ray R. Schaefer
Deputy



RECORD OF SURVEY MAP

SHOWING A PORTION OF THE NORTHEAST 1/4
OF THE SOUTHEAST 1/4 OF SECTION 10, T.22N., R.13E., M.D.M.
PLUMAS COUNTY, CALIFORNIA

SURVEYED AT THE REQUEST OF
DOUGLAS M. JOY

SCALE 1"=100'

DECEMBER 1964

WALTER B. GRIMES & ASSOC.
LICENSED ENGINEERS & SURVEYORS
1338 MANGROVE AVE., CHICO, CALIFORNIA