

# NOTES •

THE BASIS OF BEARINGS IS THE SOUTH LINE OF SECTION 21 GIVEN AS S89°49'W ON THE G. L. O. NOTES AND SHOWN AS N89°59'19"W ON THIS MAP.

THE SECTION DIVISIONAL LINES AS SHOWN ON THIS MAP ARE BASED ON THE FOLLOWING FOUND CORNERS: THE NORTH 1/4 CORNER, THE WEST 1/4 CORNER, THE SOUTH 1/4 CORNER, THE SOUTHEAST CORNER, AND THE EAST 1/4 CORNER, ALL OF SECTION 21. ALL DIVISIONAL LINES WERE PROPORTIONED USING THE ORIGINAL G.L.O. NOTES.

# LEGEND •

SET 3/4" IRON PIPE MARKED R.C.E. 7294 AT ALL PARCEL CORNERS  
FOUND ROCK MOUND AND BEARING TREE

This map correctly represents a survey made by me or under my direction in conformance with the requirements of the Land Surveyors Act at the request of Frank Couper in November, 1964. This Record of Survey is not a subdivision as defined in Section 11535, Article 3, Chapter 2 of the Business and Professions Code.

*Edward P. Norris*  
EDWARD P. NORRIS L.S. 2846

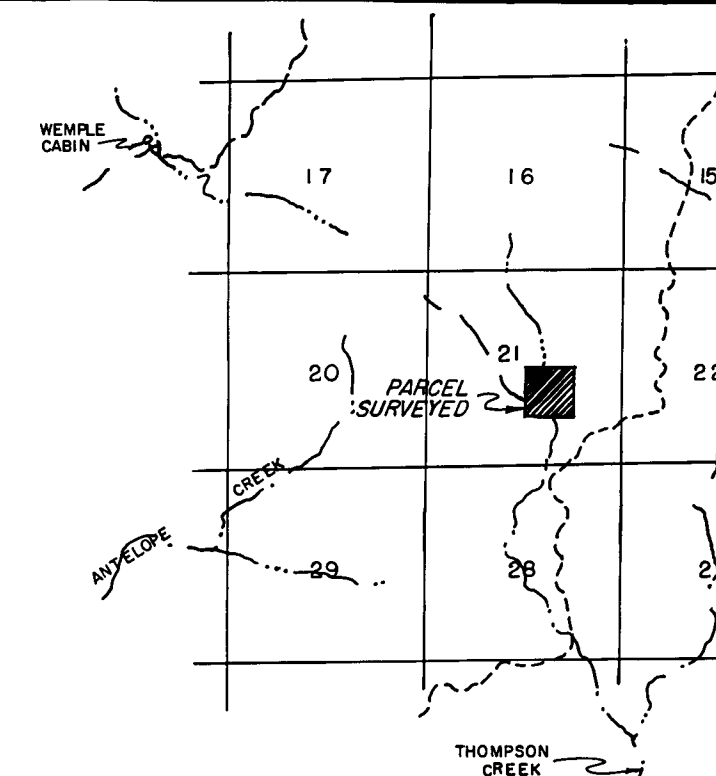
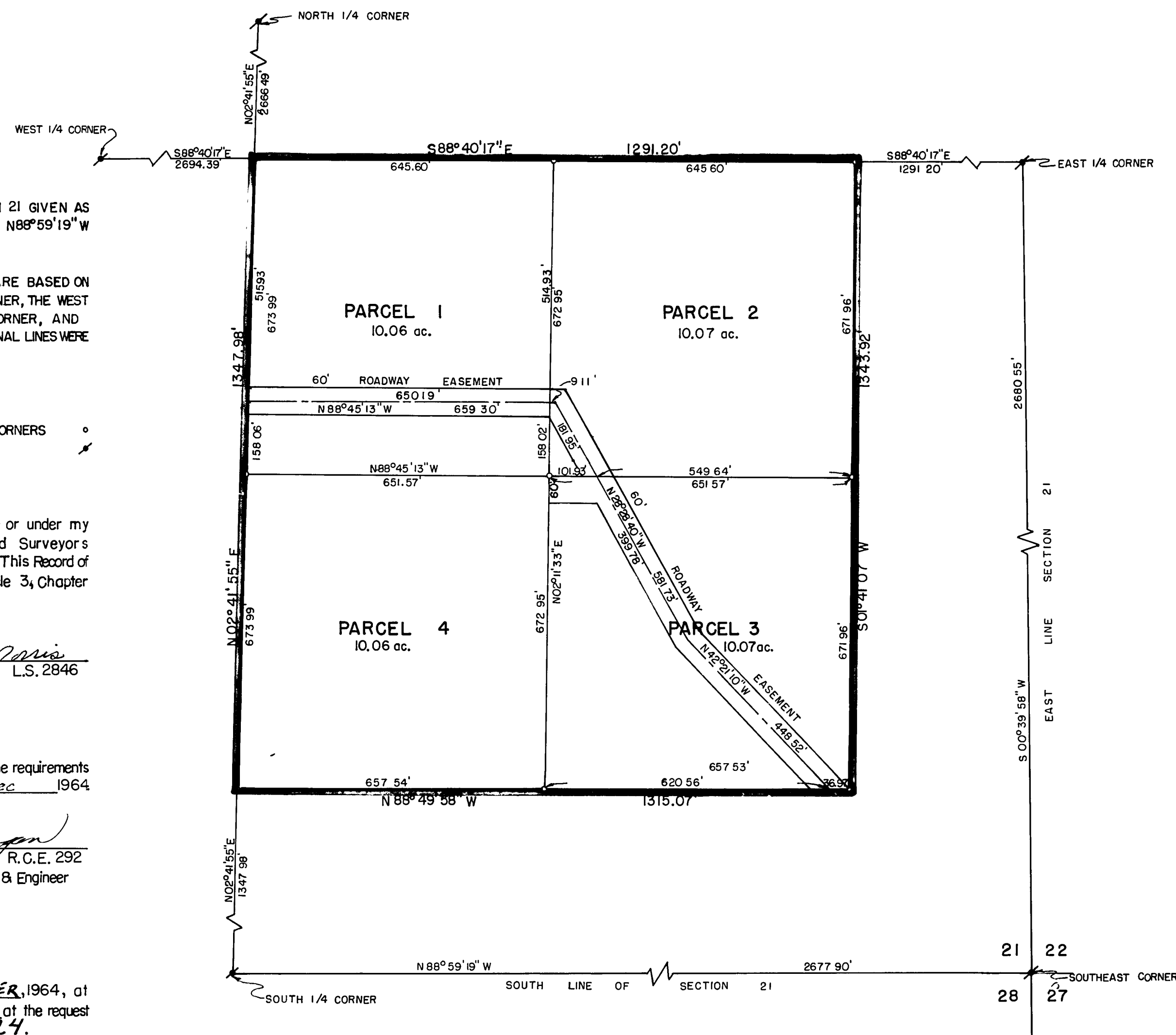
This map has been examined for conformance with the requirements of the Land Surveyors Act this 15<sup>th</sup> day of Dec 1964

*James F. Flanagan*  
JAMES F. FLANAGAN R.C.E. 292  
County Surveyor & Engineer

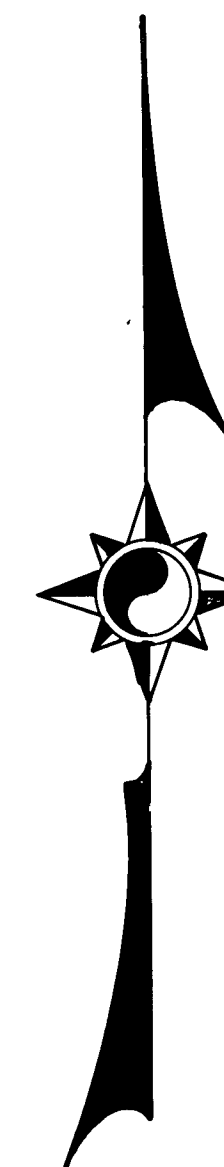
Filed for record this 18<sup>th</sup> day of DECEMBER, 1964, at 11:30 A.M. in Book 3 of 18-23 at page 10 at the request of J. F. Flanagan Recording No. 3224.

5°

*Ida Hagan Gronwald*  
County Recorder



LOCATION MAP  
SCALE 1" = 1 MILE



## RECORD OF SURVEY MAP

SHOWING THE NORTHWEST 1/4 OF THE SOUTH-EAST 1/4 OF SECTION 21, T.27N., R.13E., M.D.B.&M. PLUMAS COUNTY, CALIFORNIA

SURVEYED AT THE REQUEST OF  
FRANK COUPER

SCALE 1"=200'

NOVEMBER 1964

WALTER B. GRIMES & ASSOC.  
LICENSED ENGINEERS & SURVEYORS  
1338 MANGROVE AVE., CHICO, CALIFORNIA